

INSTRUCTIONS

1. Original and/or subsequent record used to evaluate the corner position.
2. Description of evidence found, note discrepancies in the record, state method of establishing lost or obliterated corners.
3. Description of monument and accessories set to perpetuate the corner position.
4. Sketch of corner, show all pertinent data which can best be shown in a sketch example, corner marking, topography lies, position of accessories, etc.
5. Certification must be signed and sealed by Land Surveyor registered in the State of Montana.
6. Fill in Cross Index & Section Diagram at bottom of sheet.

CERTIFIED CORNER RECORDATION

Corner E. 1/4 Corner Section 10 T. 25N. R. 22W. P.M.M. LAKE County

RECORD: from G.L.O. Field Book 3208, page 38, surveyed by Charles Smith in May through June 1897.

Set a slate stone, 16" x 12" x 6", 11" in the ground marked "1/4" on west face, from which:

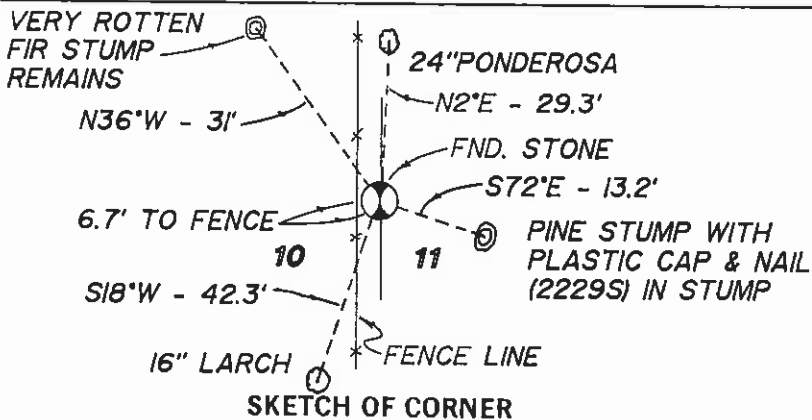
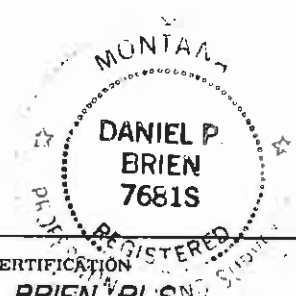
- a 18" pine bears S69°20'E 21 lks. (13.86')
- a 15" fir bears N34°45'W 47 lks. (31.02')

FOUND: stone 4" x 10", 5" out of the ground with "1/4" on west face, from which:

- a pine stump with Medland (2229S) plastic cap & nail in stump bears S72°E 13.2'
- a 16" larch with overgrown blazes and "E 1/4" cut into tree bears S18°W 42.3'
- a north/south existing fenceline bears West 6.7' from found stone
- a very rotten and decayed stump remains bears N36°W 31'

SET: nothing set

Used a SILVA hand compass (declination 18° E)



CERTIFICATION REGISTERED

I, DANIEL P. BRIEN, PLS certify the information shown herein is true and correct.

Signature Ground Party Chief

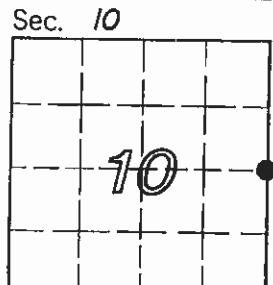
I, DANIEL P. BRIEN, PLS certify that this Corner Record correctly represents work performed by me or under my direction in compliance with the "Corner Recordation Act" (70-22-101, et seq., M.C.A.)

Daniel P. Brien
Signature of Surveyor & Seal

Date: 5/98 Reg. No. 7681S

Employer: HERSMAN LAND SURVEY

Office of Clerk and Recorder, County of LAKE. This "corner record" was filed for record on OCT 29 1998 at 9:30 A.M. was noted on the cross-index plat and is assigned page No. 394176, in book No. RUTH E. HODGES



• - corner this sheet

by Vicki Riehe, Deputy
County Official

Cross Index No. G-17 T. 25N. R. 22W. P.M.M.

-2192