

INSTRUCTIONS

1. Original and/or subsequent record used to evaluate the corner position
2. Description of evidence found, note discrepancies in the record, state method of establishing lost or obliterated corners
3. Description of monument and accessories set to perpetuate the corner position.
4. Sketch of corner, show all pertinent data which can best be shown in a sketch example, corner marking, topography lies, position of accessories, etc.
5. Certification must be signed and sealed by Land Surveyor registered in the State of Montana.
6. Fill in Cross Index & Section Diagram at bottom of sheet.

CERTIFIED CORNER RECORDATION

Corner S.W. Sec. Cor. Section 24 T. 25N. R. 22W. P.M.M. LAKE County

RECORD: from G.L.O. Field Book 2708, pages 6 & 7, surveyed by Newton Orr in August 1892

Set a sandstone, 18" x 12" x 3", 12" in the ground, from which:

- a 18" tamarack bears N34°E 32 lks. (21.12')
- a 12" fir bears S53°E 24 lks. (15.84')
- a 12" tamarack bears S52°W 6 lks. (3.96')
- a 8" tamarack bears N40°W 61 lks. (40.26')

FOUND: Fence corner at intersection of excavated skid roads. Original stone was not found.

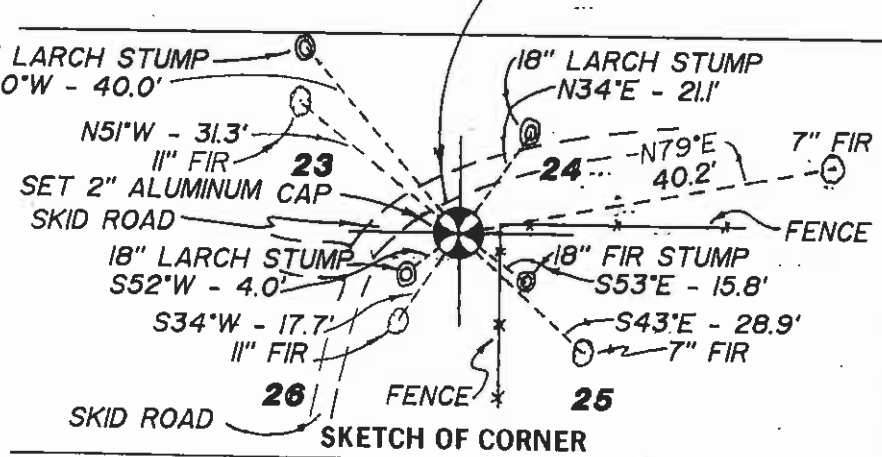
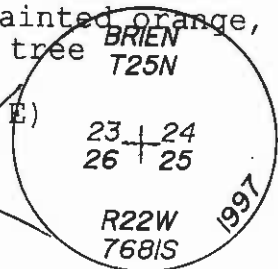
- a 18" tamarack rotten stump 1' high bears N34°E 21.1' with no scribing visible
- a 18" fir stump 2.5' high bears S53°E 15.8', with no scribing visible
- a 18" tamarack stump 2.5' high bears S52°W 4.0' with "BT" scribing visible
- a 19" tamarack stump 1' high bears N40°W 40.0' with no scribing visible

SET: Held swing ties as shown under "Found" from BT stumps. Set 5/8" rebar and 2" aluminum cap (7681S), from which:

- a 7" fir scribed "RM" with blazes painted orange, bears N79°E 40.2', set MARLS BT tag on tree
- a 7" fir scribed "RM" with blazes painted orange, bears S43°E 28.9', set MARLS BT tag on tree
- a 11" fir scribed "RM" with blazes painted orange, bears S34°W 17.7', set MARLS BT tag on tree
- a 11" fir scribed "RM" with blazes painted orange, bears N51°W 31.3', set MARLS BT tag on tree

Used a SILVA hand compass (declination 18° E)

See C.O.S. 5451



CERTIFICATION

I, DANIEL P. BRIEN, certify the information shown herein is true and correct.

Signature Ground Party Chief

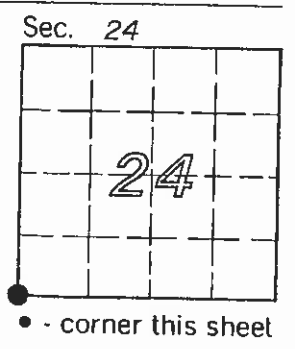
I, DANIEL P. BRIEN, certify that this Corner Record correctly represents work performed by me or under my direction in compliance with the "Corner Recordation Act" (70-22-101, et seq., M.C.A.)

Signature of Surveyor & Seal

Date: 7/14/97 Reg. No. 7681S

Employer: HERSMAN LAND SURVEY

Office of Clerk and Recorder, County of LAKE. This "corner record" was filed for record on OCT 29 1998 9:37 A.M. was noted on the cross-index plat and is assigned page No. 394183, in book No. by Vicki Riehe, Deputy RUTH E. HODGES County Official



-2199

Cross Index No. R-21 T. 25N. R. 22W. P.M.M.