

CERTIFIED CORNER RECORDATION

Corner 1/4 7/18 T. 26N. R. 18W. P.M.M. Lake County

GLO Record, Book 2717 Page 29

"Set a post 3 ft. long 3 ins. square 24 ins. in the ground for 1/4 sec. cor. mrked 1/4 S. on N. face; from which

A fir 7 ins. diam. bears N.28'E. 9 lks. distant marked 1/4 S. B. T.

A tamarack 20 ins. diam. bears S.9'15"E. 51 lks. distant marked 1-4 S. B. T."

1974 Certificate of Survey No. 2270 - Doyle
"Rebar set from B.T.'s"

Urbach 1975

"Found: A 2"x2" wood post placed in the same hole as a 4 sided post marked as above [1/4 S. on N. face] from which a 26" tamarack bears S. 9'15"E., 33.0 feet Marked 1/4 S. BT. No other tree was found."

1996 Remonumentation by S. R. Smith

Found one original bearing tree, no monument. Reset monument from bearing tree tie shown on Urbach corner record. Set an aluminum pipe 2 1/2" diameter, 30" long with 3 1/4" diameter aluminum cap, marked as shown below.

From which,

A larch, 30" diameter, original GLO bearing tree, with a blaze that is mostly grown over and illegible, bears S. 9'15' E., 33.00' dist.

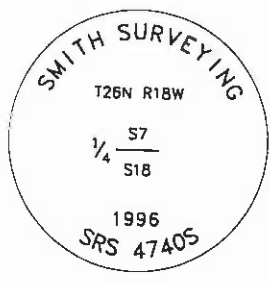
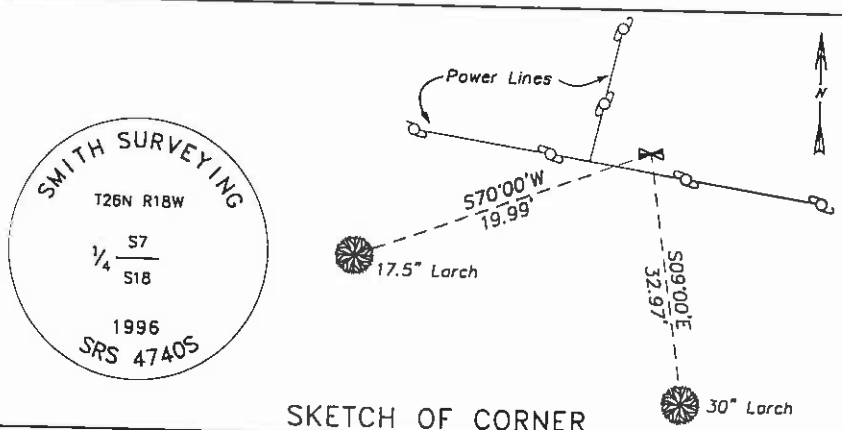
New bearing tree established this survey:

A 1 1/4" yellow plastic cap marked "SMITH 4740S", and spike set in a 17.5" diameter larch, scribed "1/4 S18 BT", bears S. 70° W., 19.99' dist.

Bearings listed in remonumentation section were measured with a hand compass, declination 17 1/2' East.

All new bearing trees marked with a snow blaze, notch at base of scribing and Bearing Tree sign. Bearings and distances are to center of tree.

Refer to the Certificate of Survey filed in conjunction with this corner recordation for ties to adjacent section controlling corners in the area.



CERTIFICATION

I, Thomas E. Stark
certify the information shown herein is true and correct.

Thomas E. Stark
Signature of County Survey Chief

I, S. R. Smith
certify that this Corner Record correctly represents work performed by me or under my direction in compliance with the "Corner Recordation Act" (70-22-101, et seq., M.C.A.)

S. R. Smith
Signature of Surveyor & Seal

Date: 12/31/96 Reg. No. 4940S

Employer: Smith Surveying

SKETCH OF CORNER

Office of Clerk and Recorder, County of Lake. This "corner record" was filed for record on JAN 17 1997 at 11:01 AM

was noted on the cross-index plat and is 379401, in RUTH E. HODGES County Official

Judy Munizdep
Adopted July 1, 1981, Montana Board of Professional Engineers & Land Surveyors

Cross Index No. J-3 T. 26 N. R. 18 W. PMM

Sec. 7

corner this sheet