

CERTIFIED CORNER RECORDATION

Corner Southeast Corner, Section 19 T. 26 N. R. 18 W. P.M.M. Lake County

1892 Original General Land Office record by George K. Reeder and Charles W. Helmick, Book 2717 Page 17:

"Set a limestone 18 X 8 X 6 ins. 12 ins. in the ground. for cor to secs. 19 - 20 - 29 + 30, marked with 2 notches on S. and 5 notches on E. edges, from which

- A balsam 7 ins. diam. bears N.11°50'E. 31 lks, dist. marked T.26n R.18W. S. 20 B.T.
- A tamarack 8 ins. diam. bears s.17°25'E. 11 lks, dist. marked T.26N. R.18W. S. 29 B.T.
- A tamarack 14 ins. diam. bears s.59°45'W. 35 lks, dist. marked T.26N. R.18W. S. 30 B.T.
- A tamarack 10 ins. diam. bears N.27°10'W. 30 lks, dist. marked T.26N. R.18W. S. 19 B.T."

2004 remonumentation by Michael J. Drenth 10684LS:

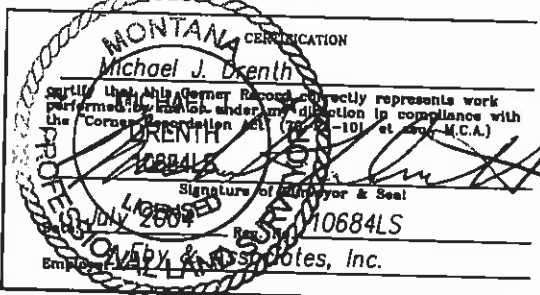
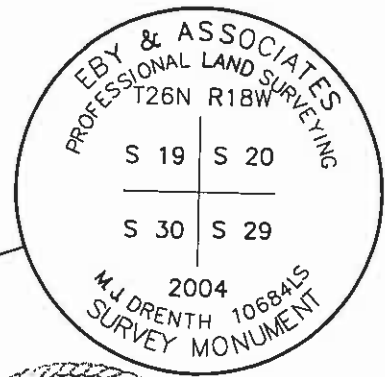
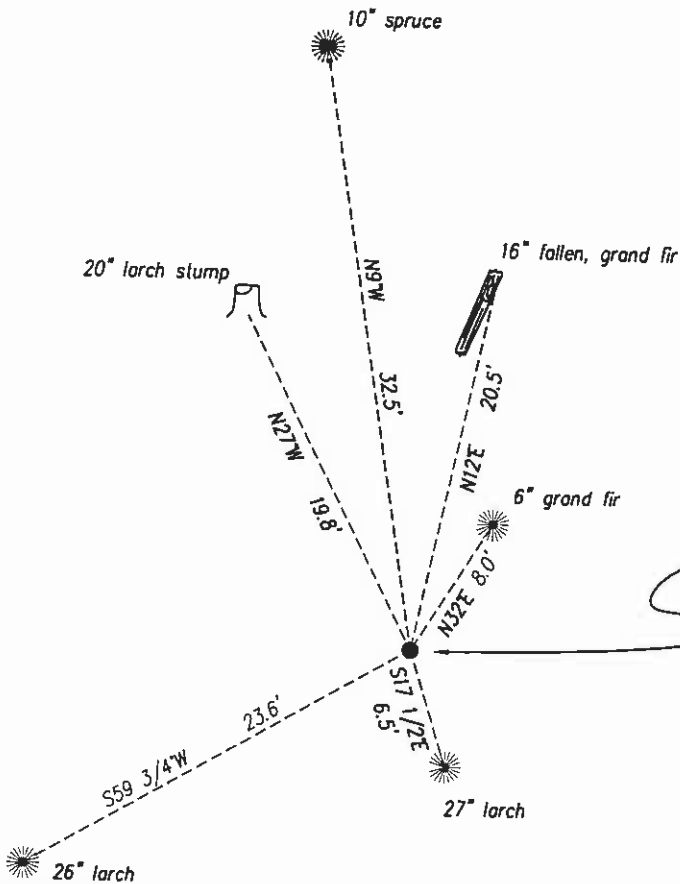
Found original General Land Office stone, 18x8x6 inches, 9 inches in the ground, with two notches on south and four notches on east edges. From which:

- A grand fir, 16 inches diameter, fallen to the southwest, bears N. 12' E., 20.5 feet distant.
- A larch, 27 inches diameter, bears S. 17 1/2' E., 6.5 feet distant, with visible scribing.
- A larch, 26 inches diameter bears S. 59 3/4' W., 23.6 feet distant, with overgrown face.
- A larch stump, 20 inches diameter, 30 inches tall, bears N. 27' W., 19.8 feet distant, log with overgrown face along side.

In the exact position of the original stone, I set a 2 1/2 inch diameter aluminum pipe, 30 inches long, with a 3 1/4 inch diameter aluminum cap, marked as shown, 24 inches in the ground. From which I establish two new bearing trees:

- A grand fir, 6 inches diameter bears N. 32' E., 8.0 feet distant, scribed "T26N R18W S20 BT"
- A spruce, 10 inches diameter, bears N. 9' W., 32.5 feet distant, scribed "T26N R18W S19 BT"

I place Land Survey Monument signs on all original General Land Office bearing trees, snag and stump. I bury the original stone upside down along the north side of the aluminum monument. All bearings and distances measured with a Silva hand compass (18' magnetic declination) and steel tape.



Office of Clerk and Recorder, County of Lake. This "corner record" was filed for record on APR 11 2007 @ 11:35 AM

was noted on the cross-index plat and is assigned page No. 478698 in book No. 478698 in Jeta Edington Deputy County Official

RUTH E. HODGES

Cross Index No. R - 5 T. 26N R. 18W P.M.M.

Sec. 19

Adopted July 1, 1981, Montana Board of Professional Engineers & Land Surveyors

• corner this sheet

Handwritten notes:
 1/2
 2722
 sec 19.dwg