

DESCRIPTION OF CORNER EVIDENCE FOUND, AND ORIGINAL RECORD (IF KNOWN)

15 14 Original stone found
Remains of original B.T.'s found

Original post not found. 2" pipe set by Hersman (found).
Original B.T. 14" Pine, N. 3° 53' E. 44 lks. found
Original B.T. 10" Cedar S. 63° 20' E. 26 lks. stump found
Original B.T.'s. in SW. & NW. quads gone.

DESCRIPTION OF MONUMENT AND ACCESSORIES ESTABLISHED TO PERPETUATE THE ORIGINAL LOCATION OF THIS CORNER:

Date of work: Aug 1972

15 14
M. = 1" FIA 71° W. 2'
R.M. = 8" Tamarack S. 70° E. 14.0'

M. = Cedar 56° W. 4'
R.M. = used original B.T. 2" pipe, set by Hersman
15 14
22 23 R.M. = 14" cedar S. 28° E. 24.0'

SKETCH, WITH COURSE AND DISTANCE TO ADJACENT CORNERS IF DETERMINED IN THIS SURVEY. (MAY SKETCH OR PASTE REPRODUCTION ON REVERSE SIDE.)

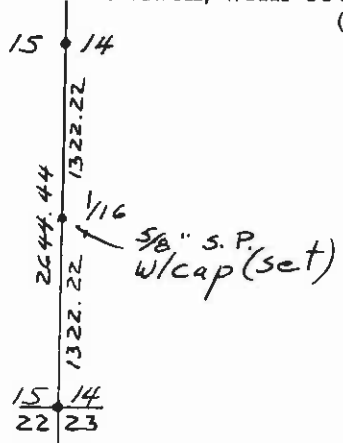
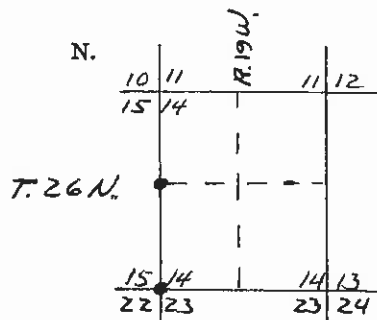


DIAGRAM OF CORNER:



Surveyor's Seal

I, _____ certify that the information shown herein is true and correct.

Signature of Ground Party Chief

I, HARRY P. MEDLAND certify that I have carefully performed or reviewed the work done on the diagrammed corner as reported on this recordation form and approve the same.

Harry P. Medland
Signature of Surveyor

22295
Registration Number

Office of Clerk and Recorder, County of Lake

This "corner record" was filed for record on the 11 day of NOV 1972, at 1:40 PM, was noted on the cross-index plat and is assigned page No. C-279, in book No. 22295

County Official

Cross Index No. L-17 T. 26 N. R. 19 W. Mer.

N-17