

CERTIFIED LAND CORNER RECORDATION

DESCRIPTION OF CORNER EVIDENCE FOUND, AND ORIGINAL RECORD (IF KNOWN)

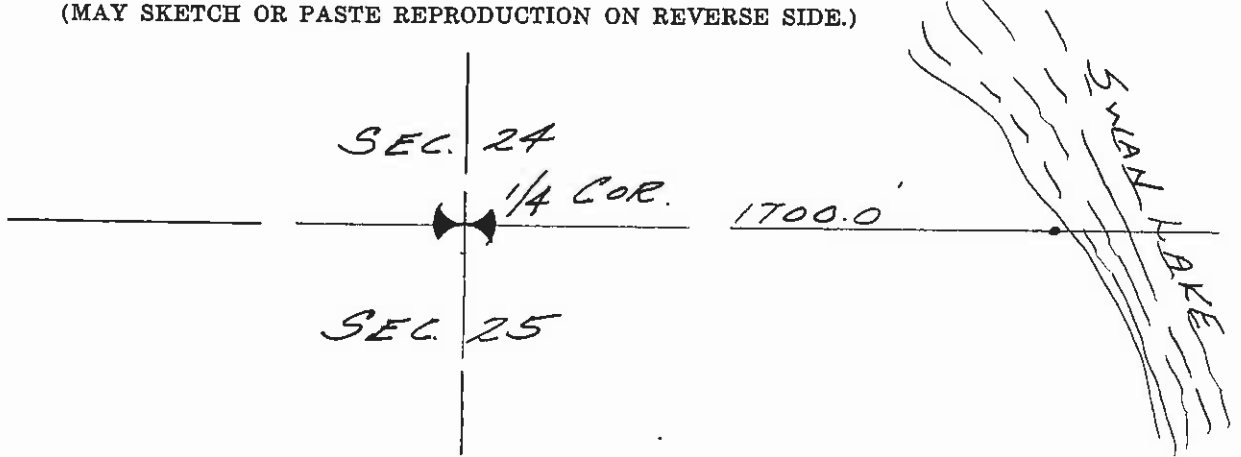
17" diameter Western Larch blazed on the South face - tree has been damaged by an old burn - scribing is very faint, with S 24 being the only lettering distinguishable - Tree to Brass Cap S 74° E, 52.2 feet - Bearing tree rotten and decaying about 6 feet high and 13" in diam. with nearly all of the bark gone and the scribing on the North face still well preserved shows 1/4 S 25 BT with Bearing N 31° 30' W., 88.6 feet to Brass Cap.

DESCRIPTION OF MONUMENT AND ACCESSORIES ESTABLISHED TO PERPETUATE THE ORIGINAL LOCATION OF THIS CORNER:

Date of work: Sept. 28, 1964

Set a Brass Cap mounted on 1 1/2" galv. pipe 30" long with approximately 12" out of the ground marked 1834-S 1/4 S 24 from which an 8" diam. Western Larch blazed at the base on the T 26 N - R 19 W 9-28-64 SW face and scribed 1/4 bears N 43° 30' E., 7.5 feet; also from which a 7" diam. Western Larch blazed on the NE face and scribed 1/4 bears S 22° W., 40.0 feet.

SKETCH, WITH COURSE AND DISTANCE TO ADJACENT CORNERS IF DETERMINED IN THIS SURVEY. (MAY SKETCH OR PASTE REPRODUCTION ON REVERSE SIDE.)

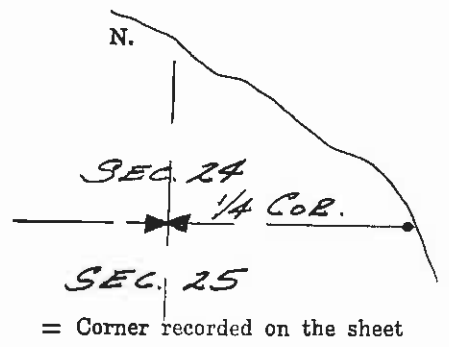


Surveyor's Seal

I, Douglas M. Bishop certify that the information shown herein is true and correct. Signature of Ground Party Chief

I, Douglas M. Bishop certify that I have carefully performed or reviewed the work done on the diagrammed corner as reported on this recordation form and approve the same. Signature of Surveyor

DIAGRAM OF CORNER:



1834-S

Registration Number

Office of Clerk and Recorder, County of Lake

This "corner record" was filed for record on the 15 day of December 1966, was noted on the cross-index plat and is assigned page No. 41, in book No. 1

HAZEL KINNICK

County Official

Cross Index No. 247 T. 26 R. 19 Mer.

R-23