

INSTRUCTIONS

- 1. Original and/or subsequent record used to evaluate the corner position.
- 2. Description of evidence found, note discrepancies in the record, state method of establishing lost or
- 3. Description of monument and accessories set to perpetuate the corner position.
- 4. Sketch of corner, show all pertinent data which can best be shown in a sketch example, corner marking, topography ties, position of accessories, etc.
- 5. Certification must be signed and sealed by Registered Land Surveyor in State of Montana.
- 6. Fill in Cross Index & Section Diagram at bottom of sheet.

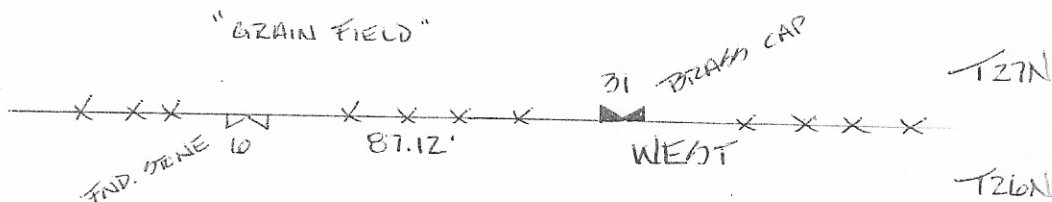
CERTIFIED CORNER RECORDATION

Corner 31 $\frac{1}{4}$ T. 27N R. 33W P.M.M. SANDERS County

GLO RECORD: None available

FOUND: Brass cap

MON.: Left brass cap in place. Corner falls in grain field and no available RM trees.



173023

SKETCH OF CORNER

CERTIFICATION

I, GLENN KNODE
 certify the information shown herein is true and correct.
[Signature]
 Registered Land Surveyor

I, GENE WARTEN
 certify that this corner record correctly represents work performed
 by me as shown by my action in compliance with the "Corner
 Recordation Act" (70-22-10, et seq., M.C.A.)
[Signature]
 Registered Land Surveyor

Date: 7/84

Employer: BOCKY KIM SURVEYORS

Office of Clerk and Recorder, County of Sanders. This "corner record" was filed for record on the Aug. 10 day of 1984 was noted on the cross-index plat and is assigned page No. 924 582, in book No. 2

[Signature]
 County Official 26 33
 A-3 by *[Signature]* 33
 Cross Index No. 23 T. 27N R. 33W P.M.M.

Sec. 31

• - corner this sheet