

1. On and/or subsequent record used to evaluate the corner position.
2. In the event of evidence found, note discrepancies in the record, state method of establishing lost or obliterated corner.
3. Description of monument and accessories set to perpetuate the corner position.
4. Sketch of corner, show all pertinent data which can best be shown in a sketch example, corner marking, topography ties, position of accessories, etc.
5. Certification must be signed and sealed by Land Surveyor registered in the State of Montana.
6. Fill in Cross Index & Section Diagram at bottom of sheet.

## CERTIFIED CORNER RECORDATION

Corner SW Sec Cor of S26 T. 26 N. R. 33 W. P.M.M. Sanders County

I. 1905 original G.L.O. record by E. Page and N. Orr: Set a stone and 4 bearing trees.

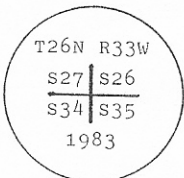
1983 B.L.M. dependent resurvey record: The cor. of secs. 26, 27, 34, and 35, monumented with a broken slate stone, 21x8x3 ins., set 15 ins. in the ground, mkd. with 2 notches on the E. and 1 notch on the S. edges.

From which the remains of an original bearing tree:

A stump, bears S18°W, 38 lks. (25.08 ft.) dist., with scribe mks. visible.

At the corner point

Set an aluminum post, 30 ins. long, 2 1/2 ins. diam., 22 ins. in the ground, with aluminum cap mkd.



From which

- A fir, 3 ins. diam., bears N29°E, 34 lks. (22.44 ft.) dist., mkd. XBT.
- A fir, 7 ins. diam., bears S78°E, 38 lks. (25.08 ft.) dist., mkd. T26N R33W S35 BT.
- A fir, 12 ins. diam., bears S44°W, 46 lks. (30.36 ft.) dist., mkd. T26N R33W S34 BT.
- A fir, 9 ins. diam., bears N22°W, 56 lks. (36.96 ft.) dist., mkd. T26N R33W S27 BT.

II. Found a 2 1/2 ins. diam. alum. pipe, 16 ins. above the ground, with BLM alum. cap mkd. as shown.

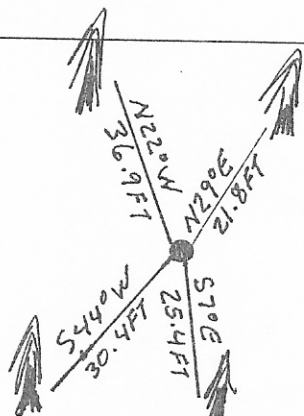
From which:

- A fir, 5 ins. diam., bears N29°E, 21.8 ft. dist., healed face.
- A fir, 10 ins. diam., bears S78°E, 25.4 ft. dist., visible scribing.
- A fir, 14 ins. diam., bears S44°W, 30.4 ft. dist., mkd. T26N R33W S34 BT.
- A fir, 13 ins. diam., bears N22°W, 36.9 ft. dist., visible scribing.

III. Painted red bands around the bearing trees and attached Land Survey Monument and Bearing Tree signs.  
Set a 6 ft. galvanized steel guard post with Land Survey Marker and Property Boundary decals, South, 4 ft.

Magnetic Declination: 20° East.

3 757



SKETCH OF CORNER

203721

CERTIFICATION

I, Thomas M. Hommel  
certify the information shown herein is true and correct.  
*Thomas M. Hommel*  
Signature Ground Party Chief

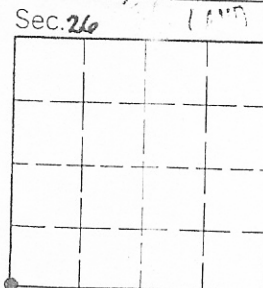
I, Alvah F. Hughes  
certify that this Corner Record correctly represents work performed by me or under my direction in compliance with the "Corner Recordation Act" (70-22-101, et seq., M.C.A.)  
*Alvah F. Hughes*  
Signature of Surveyor & Seal

Date: 3/23/92 Reg. No. 7322 LS 7322 LS  
U.S. FOREST SERVICE

Employer: \_\_\_\_\_

Office of Clerk and Recorder, County of Sanders. This "corner record" was filed for record on May 20, 1992 at 12:31 p.m. was noted on the cross-index plat and is assigned page No. 757, in book No. 3 *refill*

Dixie Knight County Official



Cross Index No. V-17 T. 26 N. R. 33 W. P.M.M.

• - corner this sheet