

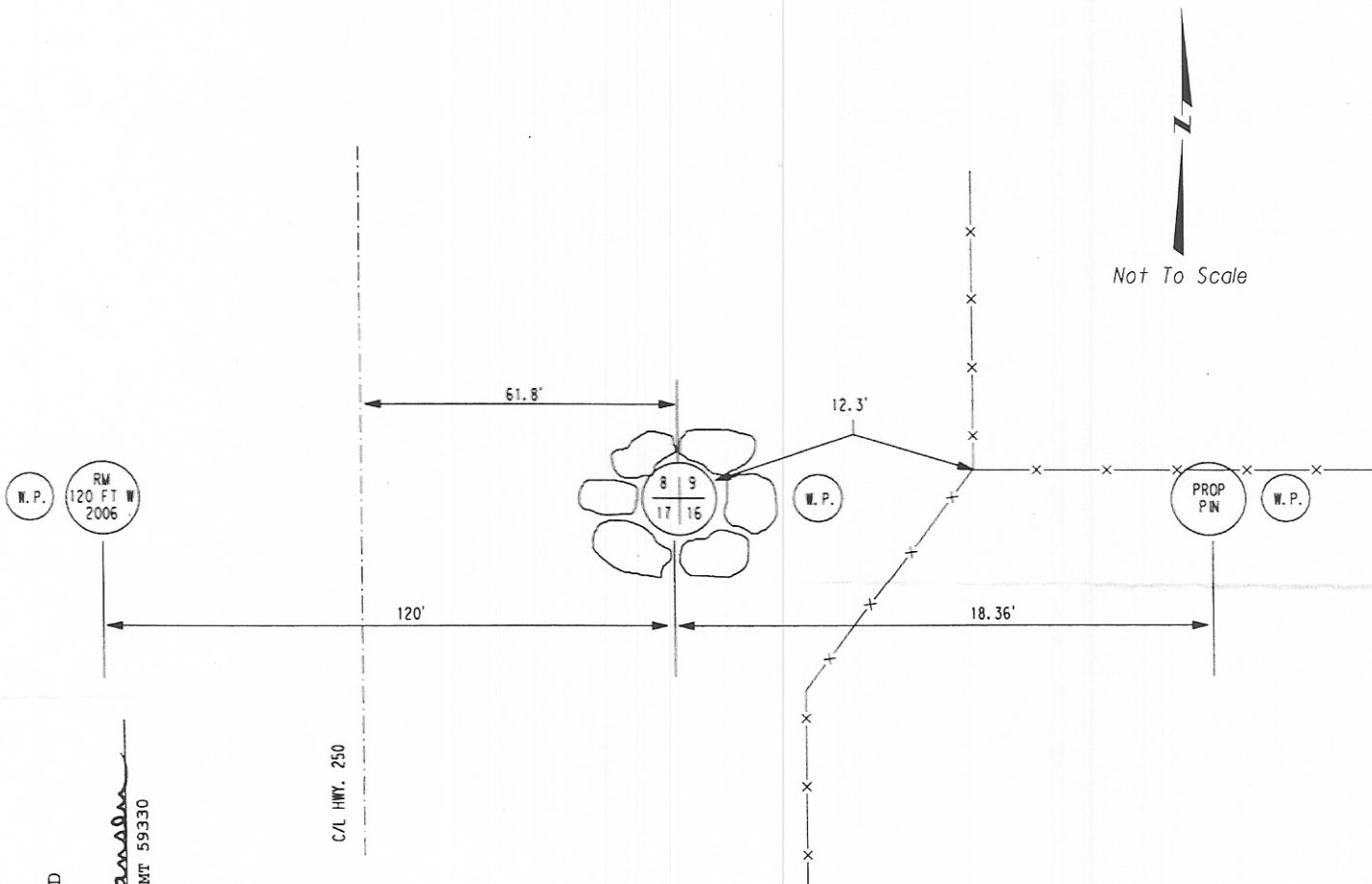
CERTIFIED CORNER RECORDATION

Corner: NW Sec. 16 , T.47N., R57E., P.M.M., Roosevelt County

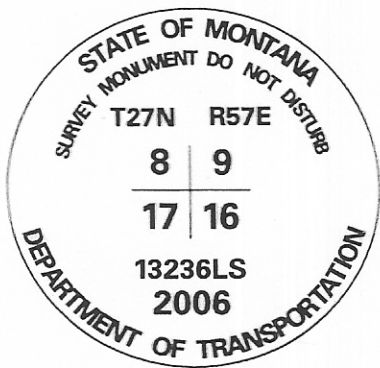
Original Record: In 1946, for dependent resurvey, Emil Vought, G.L.O. Land Surveyor set an iron post 3' long, 2" diameter, with a brass cap.

Found: In 2006, MDT Survey Crew 41-06 found monument, badly damaged but firmly set in the ground with brass cap cut off and placed next to iron post in ground. The found iron post was 61.8' East of centerline of Hwy. 250.

Set: In 2006, reset damaged monument with standard MDT monument at same location 1.0' above ground and surrounded by large stones. Set witness post 1.0' East of monument. Set a 2" A.C. as a reference monument 120' West of corner with a witness post alongside. Used property corner pin as reference 18.36' to the East and set witness post alongside.



370551 COR RECOR Pages: 1
 STATE OF MONTANA ROOSEVELT COUNTY
 RECORDED: 05/03/2006 9:45 KOI: COR RECORD
 Cheryl A Hansen CLERK AND RECORDER
 FEE: \$0.00 BY: *Cheryl A Hansen*
 TO: MT DEPT TRANSPORTATION PO BOX 890, GLENDALE MT 59330



SKETCH OF CORNER

CERTIFICATION

I, Brent Silha
 certify the information shown herein is true and correct.

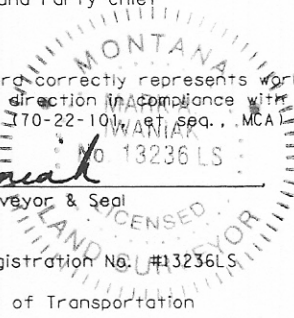
Brent Silha
 Signature of Ground Party Chief

I, Mark A. Iwanick,
 certify that this Corner Record correctly represents work performed by me or under my direction in accordance with the "Corner Recordation Act" (70-22-101, et seq., MCA).

Mark A. Iwanick
 Signature of Surveyor & Seal

Date: 5-1-06 Registration No. #13236LS

Employer: Montana Department of Transportation



Office of Clerk and Recorder, County of _____, This "corner record" was filed for record on _____, was noted on cross-index plat, and is assigned Page No. _____, in Book No. _____

 County Official

