

**INSTRUCTIONS**

1. Original and/or subsequent record used to evaluate the corner position.
2. Description of evidence found, note discrepancies in the record, state method of establishing lost or obliterated corners.
3. Description of monument and accessories set to perpetuate the corner position.
4. Sketch of corner, show all pertinent data which can best be shown in a sketch example, corner marking, topography ties, position of accessories, etc.
5. Certification must be signed and sealed by Land Surveyor registered in the State of Montana.
6. Fill in Cross Index & Section Diagram at bottom of sheet.

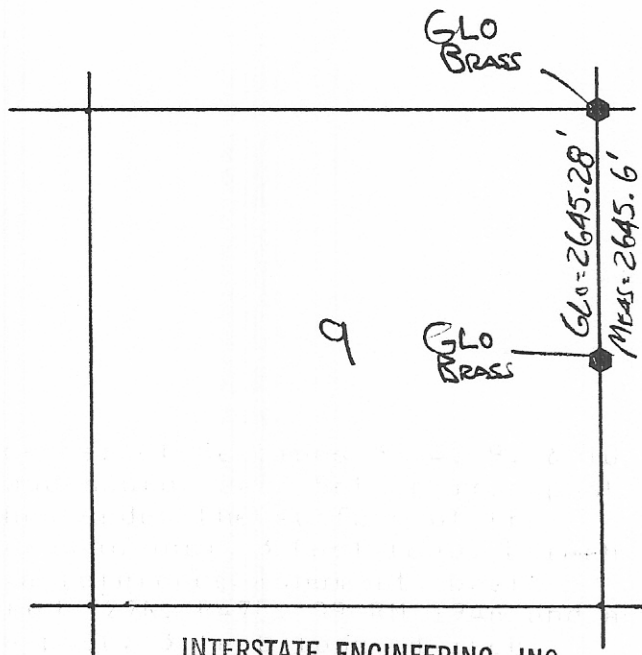
**CERTIFIED CORNER RECORDATION**

Corner Northeast Corner Section 9 T. 27N R. 47E P.M.M. Roosevelt County

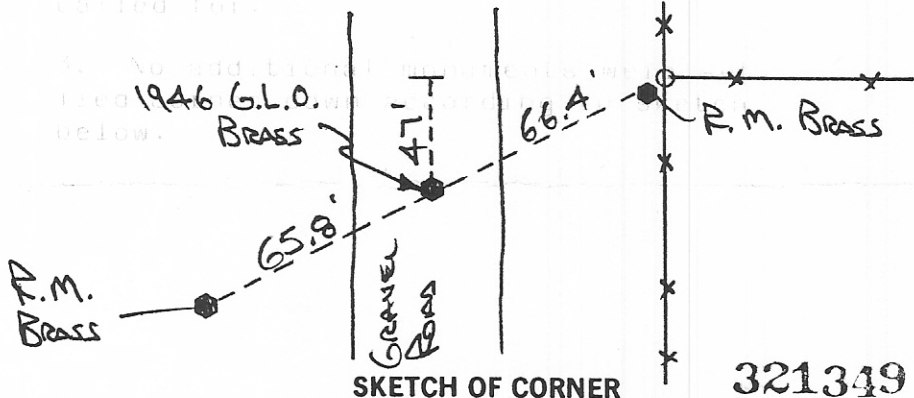
1. From dependent resurvey point for the corner of Sections 3, 4, 9, & 10 at proportionate distance; falls in north and south road. Set an iron post 1 1/2 feet long, 2 inches diameter, 13 inches under the surface of the ground, with brass cap marked from which an iron post, 3 feet long, 1 inch diameter, set 32 inches in the ground, for a reference monument, bears N45°E, 100 lks distance with brass cap marked T27N, R47E, S9 RM 1946 and an arrow pointing to the true corner. An iron post, 3 feet long, 1 inch diameter, set 32 inches in the ground, for a reference monument, bears S45°W, 100 lks distance, with brass cap marked T27N, R47E, S9 RM 1946 and an arrow pointing to the true corner.

2. Found original brass in place as called for.

3. No additional monuments were set. Tied corner down according to sketch below.



INTERSTATE ENGINEERING, INC.  
Box 648  
Sidney, Montana 59270



**MONTANA**  
CERTIFICATION

I, GREGORY L. JOHNSON  
7324LS  
Signature Ground Party Seal  
Gregory L. Johnson  
Registered Professional Surveyor

I, Gregory L. Johnson  
certify that this Corner Record correctly represents work performed by me or under my direction in compliance with the "Corner Recordation Act" (70-22-101 et seq., M.C.A.)

Date: 12-87 Reg. No. 7324 L.S.

Employer: \_\_\_\_\_

SKETCH OF CORNER

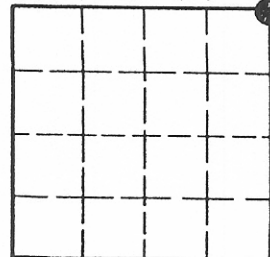
321349

INDEXED

Office of Clerk and Recorder, County of Roosevelt. This "corner record" was filed for record on February 4, 1988 at 8:43 o'clock A.M. was noted on the cross-index plat and is assigned page No. \_\_\_\_\_, in book No. \_\_\_\_\_ Fee D.H. \_\_\_\_\_

Shelley S. Eggbrecht  
County Official

Sec. Nine (9)



• - corner this sheet

# 362