

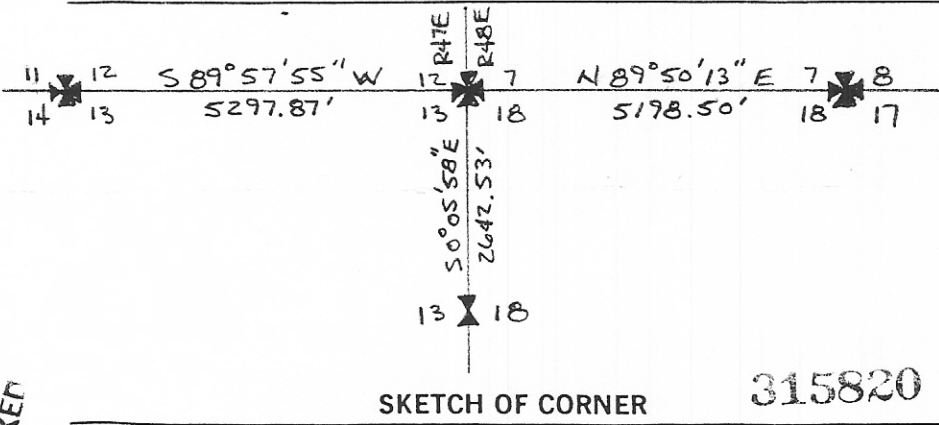
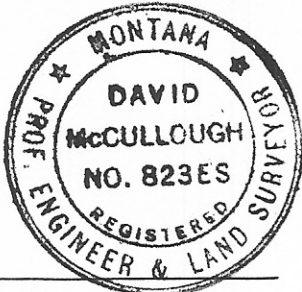
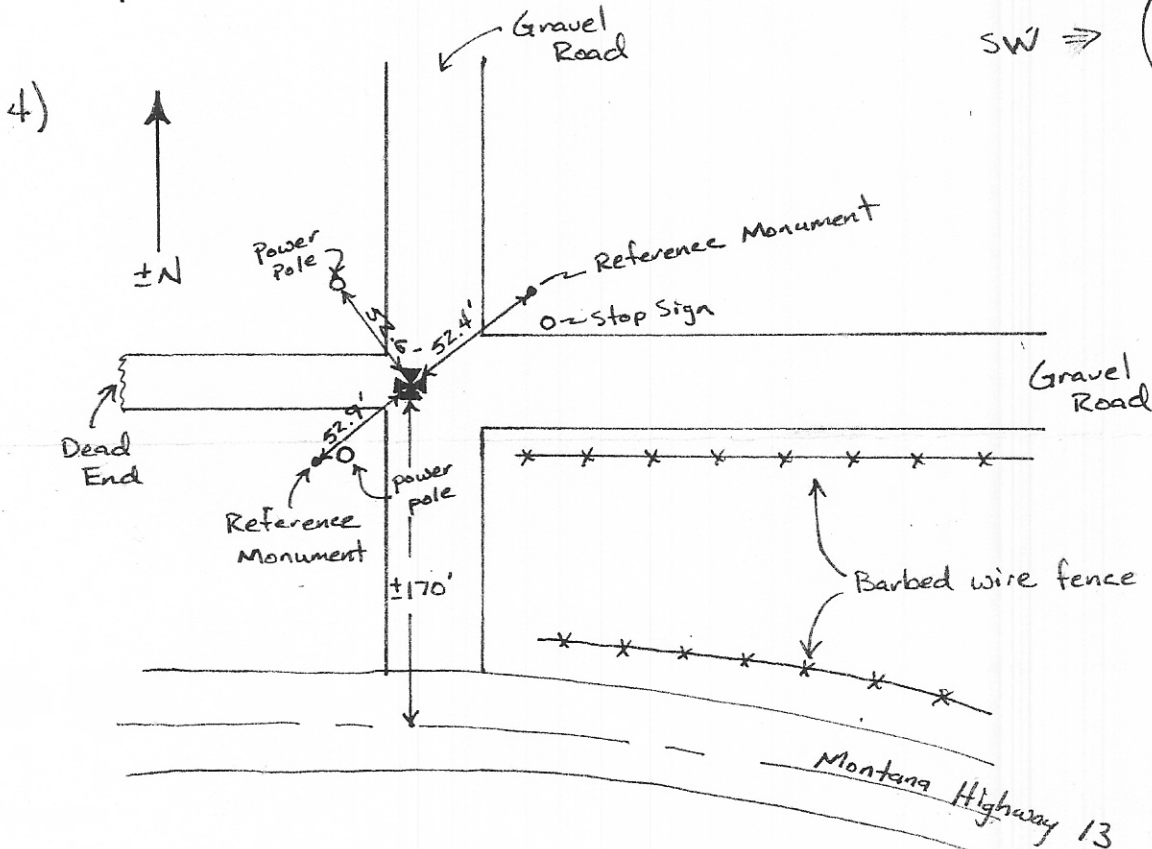
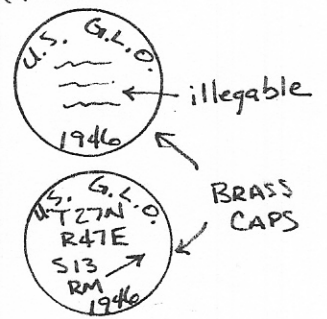
INSTRUCTIONS

1. Original and/or subsequent record used to evaluate the corner position.
2. Description of evidence found, note discrepancies in the record, state method of establishing lost or obliterated corners.
3. Description of monument and accessories set to perpetuate the corner position.
4. Sketch of corner, show all pertinent data which can best be shown in a sketch example, corner marking, topography ties, position of accessories, etc.
5. Certification must be signed and sealed by Land Surveyor registered in the State of Montana.
6. Fill in Cross Index & Section Diagram at bottom of sheet.

CERTIFIED CORNER RECORDATION

Corner $\frac{12}{13} \frac{7}{18}$ T. 27 N R. $\frac{47E}{48E}$ P.M.M. Roosevelt County

- 1) 1946 Dependent Resurvey of East Boundary of T 27N, R 47E by Bureau of Land Management.
- 2) Found $\frac{3}{4}$ " iron rod @ intersection of gravel roads, referenced by original GLO brass cap to NE a distance of 52.4' (Record = 80 Links) & original GLO brass cap to SW a distance of 52.9' (Record = 80 Links)
- 3) ~~Reference~~ Reference Monument Description: NE =>



SKETCH OF CORNER 315820

CERTIFICATION

I, _____ certify the information shown herein is true and correct.

Signature Ground Party Chief

I, David W. McCullough certify that this Corner Record correctly represents work performed by me or under my direction in compliance with the "Corner Recordation Act" (70-22-101, et seq., M.C.A.)

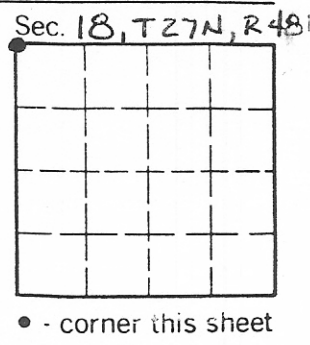
David W. McCullough
Signature of Surveyor & Seal

Date: 7/86 Reg. No. 823 ES

Employer: HKM Associates

Office of Clerk and Recorder, County of Roosevelt. This "corner record" was filed for record on July 25, 1986, 8:30 AM was noted on the cross-index plat and is assigned page No. _____, in book No. _____

Helen S. Eggbrecht
County Official



INDEXED # 281