

# CERTIFIED CORNER RECORDATION

Corner 22|23  
27|26 T. 28 N. R. 3 W. P.M.M. Pondera County

1874 G.L.O. Survey by William T. McFarland and Edward B. Bonnell, Book 755 Page 15

"Set a granite stone 16X6X6 in. 12 in. in the ground for Cor. to Secs. 22, 23, 26 and 27, marked with 2 notches on the S. and E. edges, raised a mound of stone alongside"

1997 Remonumentation by S. R. Smith

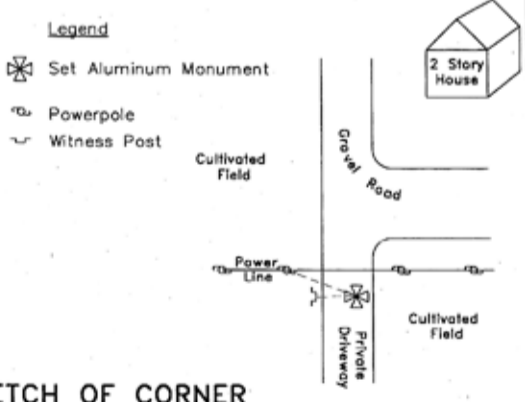
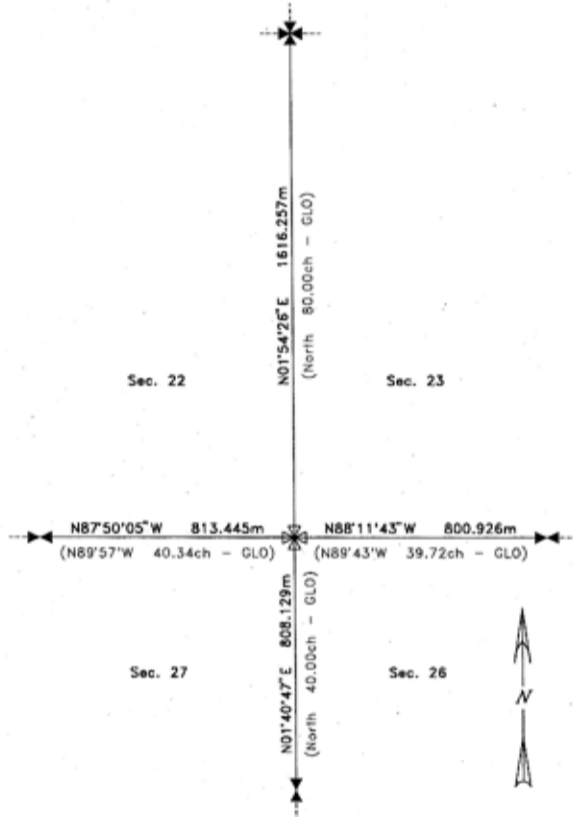
I find no evidence of the original monument or its accessories. Interview with landowner to the south indicates that the roads near this corner were not necessarily built on the section lines. At the position calculated by double proportion, I set an aluminum pipe 6.3 cm. diameter, 76.2 cm. long, 88 cm. in the ground, with 8.255 cm. diameter M.D.O.H. aluminum cap, marked as shown below, from which,

A 1.7 m. long galvanized steel post with M.D.T. survey decal attached, bears West, 5.58 m. dist.

A spike with a 3.175 cm. diameter yellow plastic cap marked "SMITH 4740S", set 30 cm. above ground on the southwest side of a 29 cm. diameter powerpole with reference sign, bears N. 61' W., 10.394 m. dist.

Bearings listed in remonumentation section were measured with a hand compass, declination 15 1/2' East.

Refer to the Certificate of Survey filed in conjunction with this corner recordation for ties to adjacent section controlling corners.



SKETCH OF CORNER

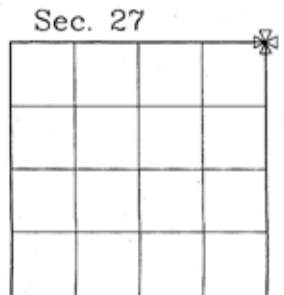
CERTIFICATION

I, Thomas E. Stark  
certify the information shown herein is true and correct.  
*Thomas E. Stark*  
Signature Ground Party Chief

I, S. R. Smith  
certify that this Corner Record correctly represents work performed by me or under my direction in compliance with the "Corner Recordation Act" (70-22-101, et seq., M.C.A.)  
*S. R. Smith*  
Signature of Surveyor & Seal

Date: 10/31/97 Reg. No. 4740S  
Employer: Smith Surveying

Office of Clerk and Recorder, County of Pondera. This "corner record" was filed for record on April 6, 1998 @ 2:41 pm was noted on the cross-index plat and is assigned page No. \_\_\_\_\_, in book No. \_\_\_\_\_  
*Janice Hopper*  
County Official



Cross Index No. R-17 T. 28 N. R. 3 W. P.M.M.

Adopted July 1, 1981, Montana Board of Professional Engineers & Land Surveyors

corner this sheet