

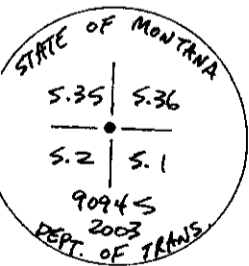
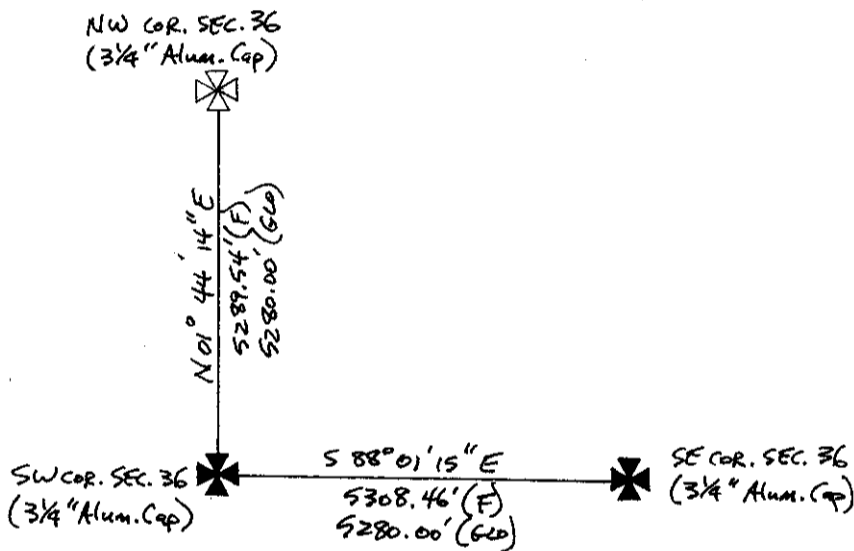
INSTRUCTIONS

1. Original and/or subsequent record used to evaluate the corner position.
2. Description of evidence found, note discrepancies in record, state method of establishing lost or obliterated corners.
3. Description of monument and accessories set to perpetuate the corner position.
4. Sketch or corner, show all pertinent data which can best be shown in a sketch example, corner marking, topography ties, position of accessories, etc.
5. Certification must be signed and sealed by Registered Land Surveyor in State of Montana.
6. Fill in Cross Index & Section Diagram at bottom of sheet.

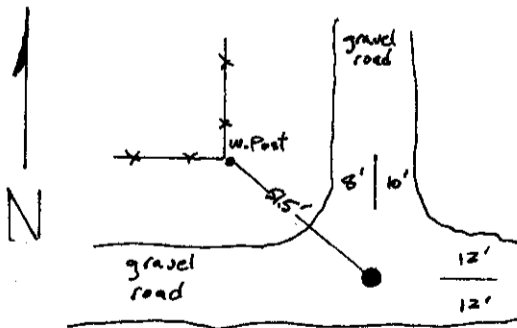
CERTIFIED CORNER RECORDATION

Corner SW Cor. Section 36 T. 28N R. 3W P.M.M. Pondera County

1. '1874' GLO - Set a granite stone 16x12x 8 in. 11 inches in the ground for corner to Sections 1, 2, 35 and 36. Marked with a notch on the East and five on the West edges. Raised a mound of stone alongside.
2. Found and accepted a 1/2" rebar with a yellow plastic cap (3524ES) at intersection of gravel roads.
3. Set a 2-1/2" aluminum pipe with a 3-1/4" MDT aluminum cap 6" deep in gravel road in place of 1/2" rebar w/Y.P. cap.



3/4" Alum. CAP



SKETCH OF CORNER

CERTIFICATION

I, Robert F. Stangler

certify the information shown herein is true and correct.

Robert F. Stangler

Signature Ground Party Chief

I, Robert F. Stangler

certify that this Corner Record correctly represents work performed by me or under my direction in compliance with the "Corner Recordation Act" (70-22-101, et seq., M.D.A.)

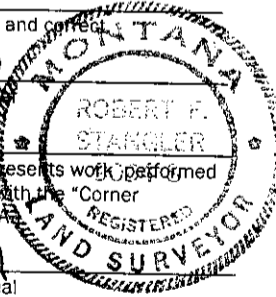
Robert F. Stangler

Signature of Surveyor & Seal

Date: 5/20/03

Reg. No. 9094S

Employer: TD&H, Inc.



Office of Clerk and Recorder, County of _____, This "corner Record" was filed for record on the _____ day of _____ 2000, Was noted on the cross-index plat and is assigned page No. _____ in Book No. _____

Sec. 36

• corner this sheet

County Official

Cross Index No. Z-21 T. 28N R. 3W P.M.M.

INSTRUCTIONS

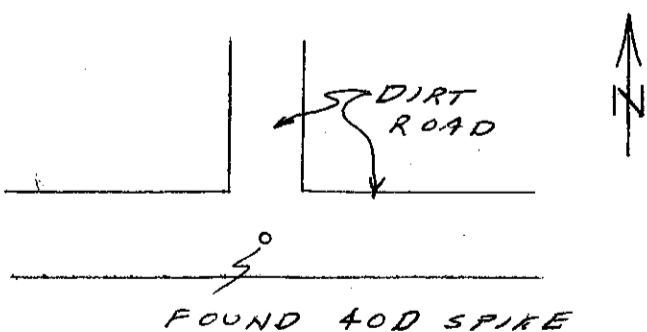
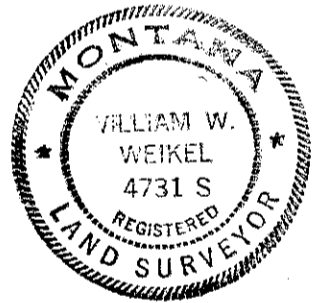
1. Original and/or subsequent record used to evaluate the corner position.
2. Description of evidence found, note discrepancies in the record, state method of establishing lost or obliterated corners.
3. Description of monument and accessories set to perpetuate the corner position.
4. Sketch or corner, show all pertinent data which can best be shown in a sketch example, corner marking, topography ties, position of accessories, etc.
5. Certification must be signed and sealed by Registered Land Surveyor in State of Montana.
6. Fill in Cross Index & Section Diagram at bottom of sheet.

CERTIFIED CORNER RECORDATION

Corner Sec. 35 | 36 2 | 1 T. 28 N. R. 3 W. P.M.M. Pondera County

GLO RECORD: (1874) Set a granite stone 16x12x8 ins., 11 inches in the ground for corner to Sections 1, 2, 35 and 36, marked with one notch on the east and five notches on the west edges and raised a mound of stone alongside.

EVIDENCE FOUND: Found a 40D spike in intersection of east-west road and road to north. Origin unknown.



SKETCH OF CORNER

CERTIFICATION

I, _____
 certify the information shown herein is true and correct.

Signature Ground Party Chief

I, William W. Weikel
 certify that this Corner Record correctly represents work performed by me or under my direction in compliance with the "Corner Recordation Act" (70-22-101, et seq., M.D.A.)

William W. Weikel
 Signature of Surveyor & Seal

Date: 1/84 Reg. No. 4731S

Employer: Sorenson & Company

Office of Clerk and Recorder, County of Pondera. This "corner record" was filed for record on the _____ day of 19____, was noted on the cross-index plat and is assigned page No. _____, in book No. _____

 County Official

Sec. 35

Cross Index No. 2-21 T. 28N R. 3W P.M.M.
2-21 27N 3W

• - corner this sheet