

INSTRUCTIONS

1. Original and/or subsequent record used to evaluate the corner position.
2. Description of evidence found, note discrepancies in the record, state method of establishing lost or obliterated corners.
3. Description of monument and accessories set to perpetuate the corner position.
4. Sketch of corner, show all pertinent data which can best be shown in a sketch example, corner marking, topography ties, position of accessories, etc.
5. Certification must be signed and sealed by Land Surveyor registered in the State of Montana.
6. Fill in Cross Index & Section Diagram at bottom of sheet.

CERTIFIED CORNER RECORDATION

Corner Sections 1. 6. 31 & 36 T. 28N R. 3W P.M.M. Pondera County

ORIGINAL RECORD: (1874 G.L.O.) Set a granite stone 16x12x8 ins., 11 ins. in the ground for cor. to townships 27 and 28 North, ranges 2 and 3 West, marked with 6 notches on each of the four edges and raised a monument of stone alongside.

SUBSEQUENT RECORD: None

SUBSEQUENT RECORD: None found.

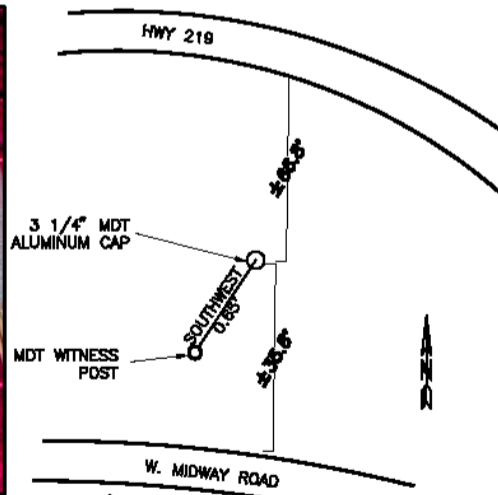
EVIDENCE FOUND: Found a 3 1/4" aluminum cap, marked as shown in the sketch below; the monument falls in a grassy area between W. Midway road and Highway 219 with a MDT witness post 0.65' to the southwest.

PERPETUATION: Left the aluminum cap as found.

Date of Survey: February, 2007.

Compass Declination Used: 16°E

NAD 83 coordinates for this corner:
 Latitude = 48°07'48.881"N Longitude = 111°55'05.156"W
 NOTE: These coordinates are to be used as a search tool only.



(Not to Scale)
 SKETCH OF CORNER

CERTIFICATION

I, Steve Cummings
 certify the information shown herein is true and correct.

 Signature Ground Party Chief

I, Kurt A. Luebke
 certify that this Corner Record correctly represents work performed by me or under my direction in compliance with the "Corner Recordation Act" (70-22-101, et seq., M.C.A.)

 Signature of Surveyor & Seal

Date: _____ Reg. No. 13237 S

Employer: DJ&A P. C.

Office of Clerk and Recorder, County of Pondera. This "corner record" was filed for record on _____ was noted on the cross index plat and is assigned page No. _____, in book No. _____

 County Official

Sec. 36

● - corner this sheet

Cross Index No. Z-25 T. 28N R. 3W PMM