

CERTIFIED LAND CORNER RECORDATION

RM, S 5, T. 28 N., R. 39 E., P.M.M.; 1946 G.L.O. Survey

DESCRIPTION OF CORNER EVIDENCE FOUND, AND ORIGINAL RECORD (IF KNOWN)

Original Record: An iron post, 3 ft. long, 2 ins. diam., set 3/4 ins. in the ground, for a reference monument, bears N. 45° E., 71 lks. dist., with brass cap mkd. S 5 RM 1946, and an arrow pointing toward the corner.

Evidence Found: Found iron post with brass cap mkd. S 5 RM, T. 28 N., R. 39 E. (1946)

DESCRIPTION OF MONUMENT AND ACCESSORIES ESTABLISHED TO PERPETUATE THE ORIGINAL LOCATION OF THIS CORNER:

Date of work: February 1981

Perpetuated corner by piling stone around the corner.

SKETCH, WITH COURSE AND DISTANCE TO ADJACENT CORNERS IF DETERMINED IN THIS SURVEY. (MAY SKETCH OR PASTE REPRODUCTION ON REVERSE SIDE.)

This ~~corner~~<sup>P.M.</sup> was targeted for aerial photography for the Department of Energy Contract # DEAC 65-81 WP 15232.

Surveyor's Seal



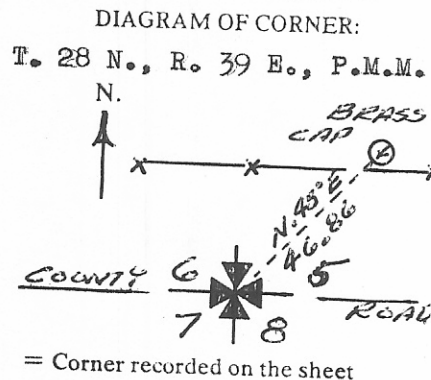
I, Kent Bauer certify that the information shown herein is true and correct.

Signature of Ground Party Chief

I, Carl R. McMillen certify that I have carefully performed or reviewed the work done on the diagrammed corner as reported on this recordation form and approve the same.

Signature of Surveyor

4659S Registration Number



STATE OF MONTANA Office of Clerk and Recorder, County of VALLEY This "corner record" was filed for record on the 5th day of AUGUST 19 82 at 2:00 P.M. assigned page No. 498 in book No. 1 of CORNER RECORDATIONS

Mary Lou Eide County Official Berta Bretzke Deputy

FEE: DH