

CERTIFIED LAND CORNER RECORDATION

Corner South 1/4 Corner Section 5 T. 28 N, R. 39 E, P.M.M.

G.L.O. Record P360 1946 Dependent Resurvey

40.34 The 1/4 Section Corner of Sections 5 and 8, marked by the intersection of the centerline of graded roads and well established property lines as denoted by old fences N and S of lane. At the corner point, set an iron post, 3 ft long 1 in. diameter 48 ins. in the ground with brass cap marked 1/4 S8 from which an iron post, 3 ft. long 2" diameter, set 29 ins. in the ground for reference monument bears North 50 lks. dist. with brass cap marked 1/4 S5RM1946 with an arrow pointing toward the corner. An iron post, 3 ft. long 2 ins. diameter set 27 ins. in the ground for a reference monument bears south 50 lks. distant with brass cap marked 1/4 S8RM1946, and an arrow pointing toward the corner.

Evidence Found

The iron posts marked as described, except the 1/4 iron post was 2" diameter, and at the surface of the road, the RM's were 1" diameter pipe, at 40 feet rather than 50 lks. as cited, and the N one was buried 1' while the S one was bent over from contact with field cultivation.

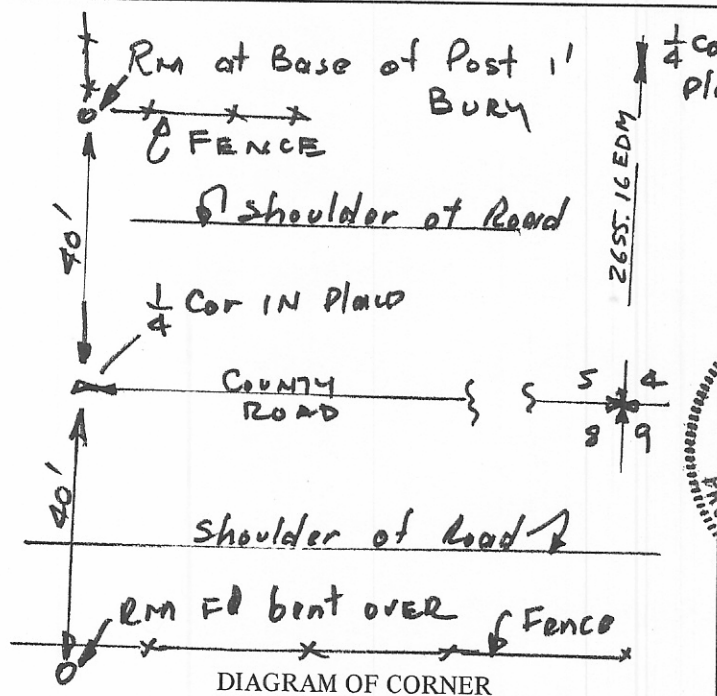


DIAGRAM OF CORNER

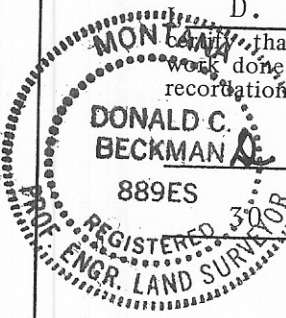
I, D. C. Beckman certify that the information shown herein is true and correct.

D. C. Beckman
Signature of Ground Party Chief

D. C. Beckman

I, D. C. Beckman, that I have carefully performed or reviewed the work done on the diagrammed corner as reported on this recortation form and approve the same.

DONALD C. BECKMAN
889ES
Signature of Surveyor



Nov. 81 Date
889 ES Registration Number

STATE OF MONTANA

Office of Clerk and Recorder, County of VALLEY

This "corner record" was filed for record on the 7th day of DECEMBER 19 81 at 8:30 A.M., was noted on the cross-index plat and is assigned page No. 458 in book No. 1 of CORNER RECORDATIONS.

Mary Lou Eide
County Official

By Bertha E. Bralyke Deputy

Cross Index No. E, 7 T. 28 N R. 39 E P.M.M.