

INSTRUCTIONS

- 1. Original and/or subsequent record used to evaluate the corner position.
- 2. Description of evidence found, note discrepancies in the record, state method of establishing lost or obliterated corners.
- 3. Description of monument and accessories set to perpetuate the corner position.
- 4. Sketch or corner, show all pertinent data which can best be shown in a sketch example, corner marking, topography ties, position of accessories, etc.
- 5. Certification must be signed and sealed by Registered Land Surveyor in State of Montana.
- 6. Fill in Cross Index & Section Diagram at bottom of sheet.

CERTIFIED CORNER RECORDATION

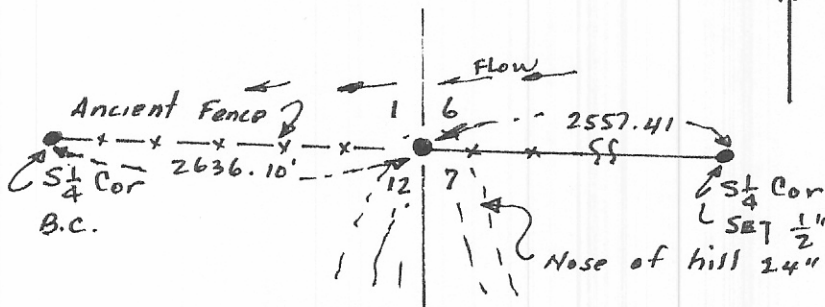
Corner SE Sec. Cor. Sec. 1 T. 28N R. 39E P.M.M. Valley County County

GLO RECORD:

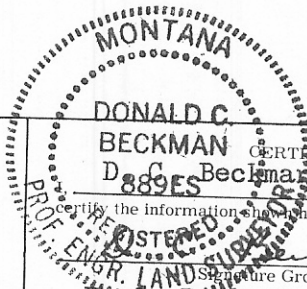
40.25 ch. The corner of Secs. 1, 6, 7 and 12 set under the S fence of the Glasgow Army Air Base. The original monument, a granite stone 12x11x6 inches properly marked with five grooves on the S and one groove on the North Edges, has been set in top of a concrete cylinder, making a monument 24 ins. diam 26 ins. long, set flush with the ground. The upper half of the original monument protrudes above the surface. This corner is not re-monumented.

EVIDENCE FOUND:

The corner as described, however a piece of twisted barbed wire is imbedded in the concrete and has been brought up over the stone to form an "x".



SKETCH OF CORNER



DONALD C. BECKMAN
D. C. Beckman
889ES

I, D. C. Beckman certify that the information shown herein is true and correct.

D. C. Beckman
Signature Ground Party Chief

I, D. C. Beckman certify that this Corner Record correctly represents work performed by me or under my direction in compliance with the "Corner Recordation Act" (70-22-101, et seq., M.D.A.)

D. C. Beckman
Signature of Surveyor & Seal

Date: Dec 82 Reg. No. 889es

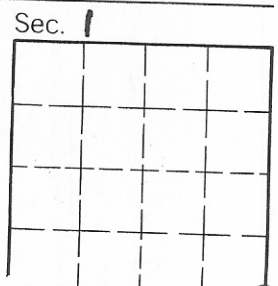
Employer: _____

STATE OF MONTANA
Office of Clerk and Recorder, County of VALLEY. This "corner record" was filed for record on the DEC 20 1982 day of 19, AT 10:30 A.M. was noted on the cross-index plat and is assigned page No. 558, in book No. 1 of CORNER RECORDATIONS

FEE: DH

By Mary Lou Eide County Official Deputy

Cross Index No. E, 25 T. 28N R. 39E P.M.M.



• - corner this sheet