

1. Original and/or subsequent record used to evaluate the corner position.
2. Description of evidence found, note discrepancies in the record, state method of establishing lost or obliterated corners.
3. Description of monument and accessories set to perpetuate the corner position.
4. Sketch or corner, show all pertinent data which can best be shown in a sketch example, corner marking, topography ties, position of accessories, etc.
5. Certification must be signed and sealed by Registered Land Surveyor in State of Montana.
6. Fill in Cross Index & Section Diagram at bottom of sheet.

CERTIFIED CORNER RECORDATION

Corner 1/4 Cor., S18 / S17 T. 28 N., R. 40 E. P.M.M. Valley County

Record: Set an iron post, 3 ft. long, 1 in. diam., 27 ins. in the ground; with brass cap mkd.

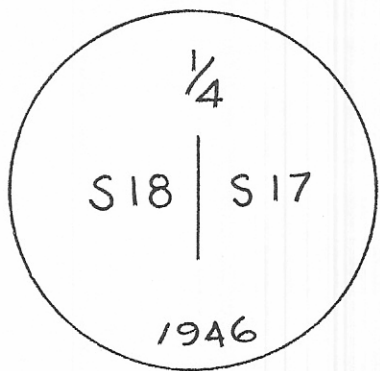
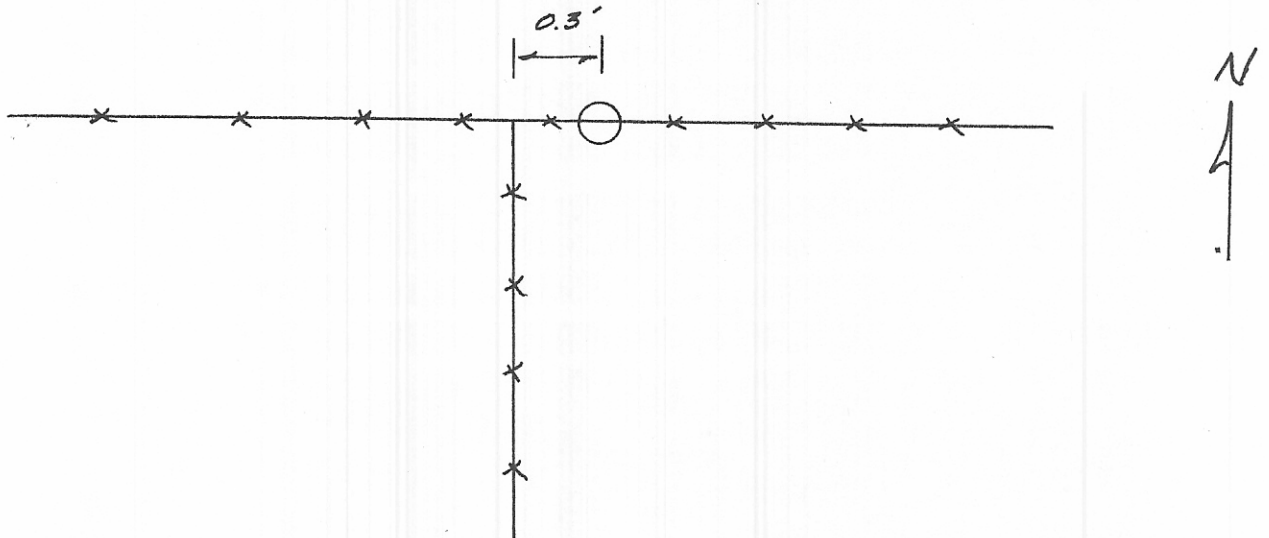
1/4

S 18 S 17

1946

Found: An iron post, 1 in. diam., extending 6 ins. above ground, with brass cap mkd as shown above.

The monument is situated 0.3 ft. East of the corner of fences extending East, South, and West.



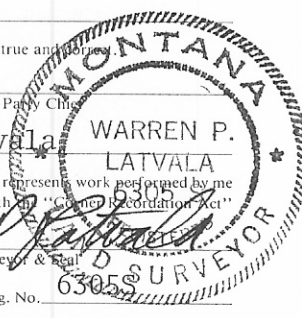
SKETCH OF CORNER

CERTIFICATION

I, _____
 certify the information shown herein is true and correct.

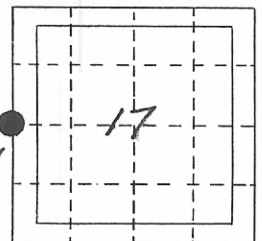
Signature Ground Party Chief
 I, Warren P. Latvala
 LATVALA
 certify that this Corner Record correctly represents work performed by me or under my direction in compliance with the "Corner Recordation Act" (70-22-101, et seq., M.C.A.)

Signature of Surveyor & Seal
 Date: 11/10/81 Reg. No. 6305
 Employer: I Tech Inc.



Office of Clerk and Recorder, County of VALLEY, STATE OF MONTANA. This "corner record" Sec.
 was filed for record on the 29th day of MARCH 19 82, at 9:00 AM
 is assigned page No. 467 in book No. 1 *Mary Lou Case*
 of CORNER RECORDATIONS County Official
 FEE: DH *By Mary Ciz, deputy*

Cross Index No. L-5 T. 28 N. R. 40 E. P.M.M.



• - corner this sheet