

INSTRUCTIONS

- 1. Original and/or subsequent record used to evaluate the corner position.
- 2. Description of evidence found, note discrepancies in the record, state method of establishing lost or obliterated corners.
- 3. Description of monument and accessories set to perpetuate the corner position.
- 4. Sketch or corner, show all pertinent data which can best be shown in a sketch example, corner marking, topography ties, position of accessories, etc.
- 5. Certification must be signed and sealed by Registered Land Surveyor in State of Montana.
- 6. Fill in Cross Index & Section Diagram at bottom of sheet.

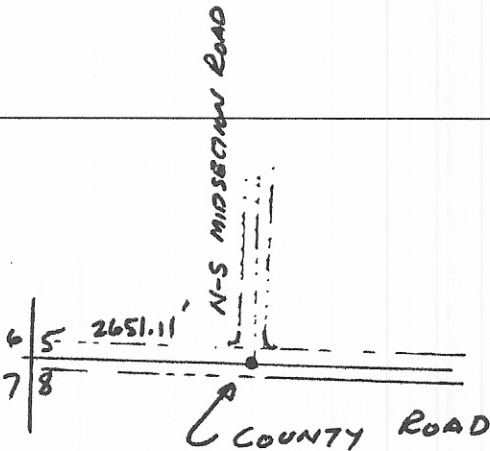
CERTIFIED CORNER RECORDATION

Corner S 1/4 Cor Sec 5 T. 28N R. 40E P.M.M. Valley County

40.00 Set a granite stone 12x9x7 ins 8 ins in the ground bor 1/4 sec. cor. marked 1/4 on North face, dug pits 18x18x12 ins E & W of stone 5 1/2 ft dist and raised a mound of earth 1 1/2 ft high 3 1/2 ft base alongside. (1891 survey)

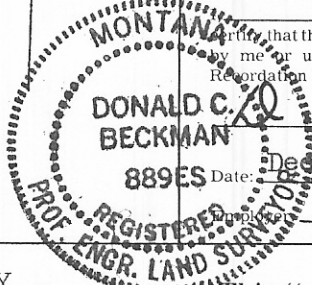
EVIDENCE FOUND:

A graded road had been constructed along the section line and no evidence of the original stone could be found. Set a 1/2" x 24" steel re-bar 6" bury at the intersection of N-S midsection road of long standing honored as the boundary by the property owners for many years in the centerline of the E-W County road and single proportioned the corner from known corners.



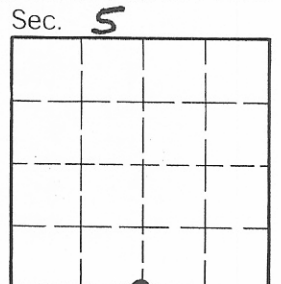
SKETCH OF CORNER

CERTIFICATION  
 I, D. C. Beckman  
 certify the information shown herein is true and correct.  
D. C. Beckman  
 Signature Ground Party Chief  
 D. C. Beckman



I certify that this Corner Record correctly represents work performed by me or under my direction in compliance with the "Corner Recordation Act" (70-22-101, et seq., M.D.A.)  
D. C. Beckman  
 Signature of Surveyor & Seal  
 Date: Dec 82 Reg. No. 889ES

STATE OF MONTANA  
 Office of Clerk and Recorder, County of VALLEY. This "corner record" was filed for record on the DEC 20 1982 day of 10, AT 10:30 A.M. was noted on the cross-index plat and is assigned page No. 561, in book No. 1 of CORNER RECORDATIONS.



• - corner this sheet

FEE: DH

County Official  
By [Signature]  
 Cross Index No. E 7 T. 28N R. 40E P.M.M.  
 45322