

INSTRUCTIONS

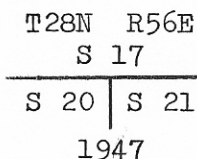
1. Original and or subsequent record used to evaluate the corner position.
2. Description of evidence found, note discrepancies in the record, state method of establishing lost or obliterated corners.
3. Description of monument and accessories set to perpetuate the corner position.
4. Sketch of corner, show all pertinent data which can best be shown in a sketch example, corner marking, topography ties, position of accessories, etc.
5. Certification must be signed and sealed by Registered Land Surveyor in State of Montana.
6. Fill in Cross Index & Section Diagram at bottom of sheet.

CERTIFIED CORNER RECORDATION

Corner N.W. Corner, Section 21 T. 28 N R. 56 E P.M.M. Roosevelt County

1. Original and/or subsequent record -- Set a sandstone 16 x 10 x 5 ins., 11 ins. in the ground for cor. to secs. 16, 17, 20, and 21, marked with 3 notches on S. and 4 notches on E. edges; dug pits 18 x 18 x 12 ins. in each sec. 5 1/2 ft. dist., and raised a mound of earth 2 ft. high, 4 1/2 ft. base, alongside.

Dependent Resurvey - 1947 -- The cor. of secs. 20 and 21, marked by the original monument, a limestone, 16 x 10 x 5 ins., firmly set and properly marked as described in the official record, and altered to a corner for secs. 20 and 21, in the record of the survey of the N. portion of the township, in 1907. At the corner point, set an iron post, 3 ft. long, 2 ins. diam., 30 ins. in the ground, with brass cap mkd.



Bury the old stone in hole alongside the iron post; raise a mound of stone, 2 ft. base, 1 1/2 ft. high, S. of corner.

2. Description of evidence found -- Found Brass Cap with Stone By. SEE ATTACHED SKETCH.
3. Set 3/8" x 8" Spike (May not be on Line) 273 feet east of the cor. of secs. 20 and 21 -- Description of monument and accessories set. SEE ATTACHED SKETCH.
4. SKETCH OF CORNER IS ATTACHED.

CERTIFICATION

I, Leo J. Horgan
 certify the information shown herein is true and correct.
Leo J. Horgan
 Signature Ground Party Chief

I, _____
 certify that this Corner Record correctly represents work performed by me or under by direction in compliance with the "Corner Recordation Act" (70-22-101, et seq., M.D.A.)
T. Nelson
 Signature of Surveyor & Seal

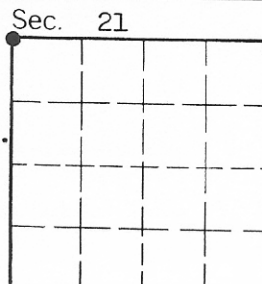
Date: _____ Reg. No. _____
 Employer: _____

297609 SKETCH OF CORNER

Office of Clerk and Recorder, County of Roosevelt. This "corner record" was filed for record on the February 7 ~~morning~~ 193 at 8:30 o'clock A. M. was noted on the cross-index plat and is assigned page No. _____, in

book No. _____
 Fee D. H.
 Leo J. Horgan
 R Rt 2 Box 93
 Williston ND 58801

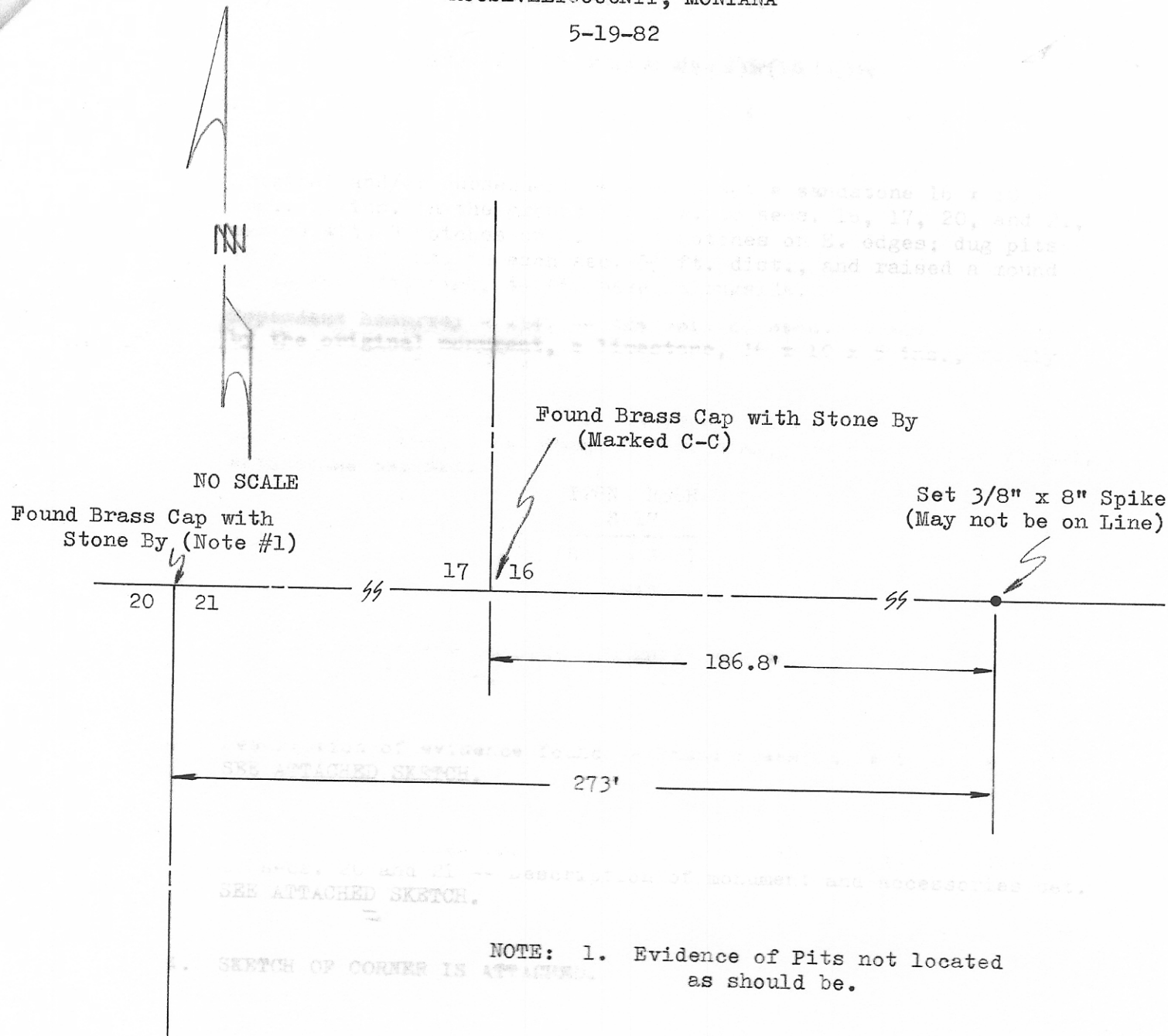
Heles A. Gysbeck
 County Official
By Registrar M. Brown, Deputy
 Cross Index No. N-9 T. 28N R. 56E P.M.M.



• - corner this sheet

INDEXED # 240

CORNER RECORDATION
 N.W. CORNER, SECTION 21
 T 28 N - R 56 E
 ROOSEVELT COUNTY, MONTANA
 5-19-82



297609

SKETCH OF CORNER

Leo J. Horgan
 Signature Ground Party Chief

I, _____
 certify that this Corner Record correctly represents work performed
 by me or under by direction in compliance with the "Corner
 Recordation Act" (70-22-101, et seq., M.D.A.)

T. Nelson
 Signature of Surveyor & Seal

Date: _____ Reg. No. _____
 Employer: _____

INDEXED

Office of Clerk and Recorder, County of Roosevelt. This "corner
 record" was filed for record on February 7 1983
 was noted on the cross-index plat and is assigned page No. _____, in

book No. _____
 Fee D. H.
 Leo J. Horgan
 R Rt 2 Box 93
 Williston ND 58801

Leo J. Horgan
 County Official

By Margaret M. Brown, Deputy
 Cross Index No. N-9 T. 28N R. 56E P.M.M.

