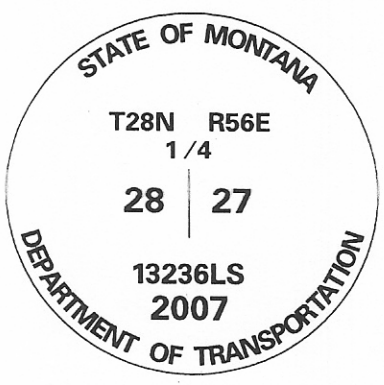
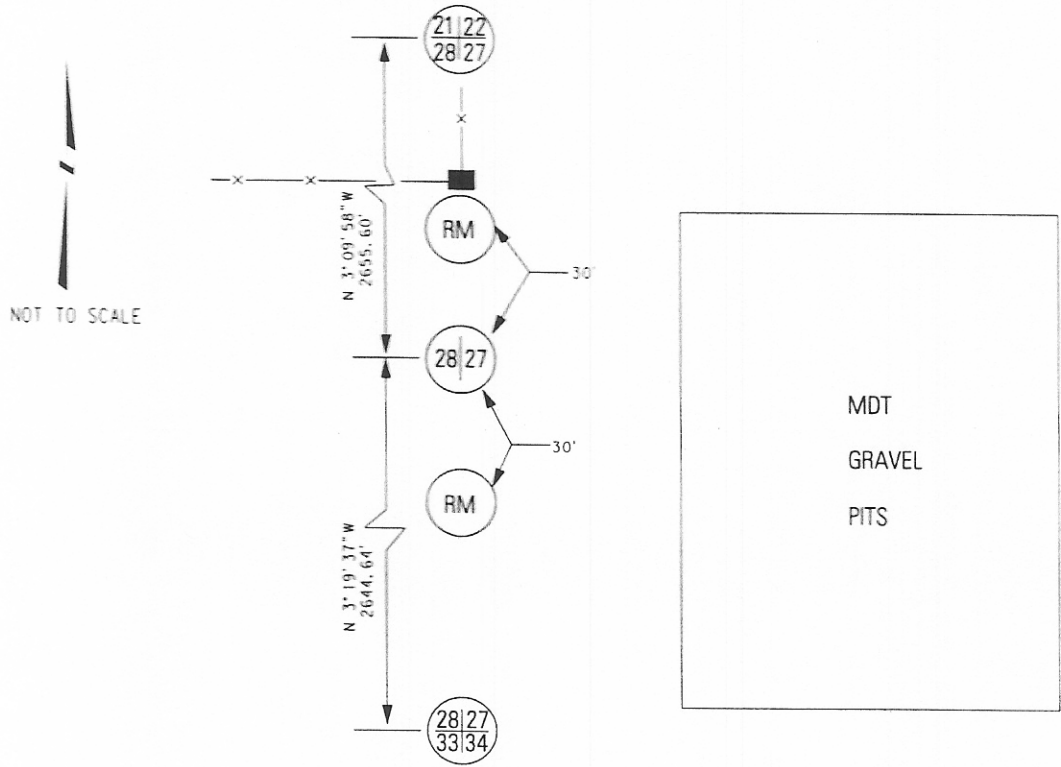


1088

CERTIFIED CORNER RECORDATION

Corner: E1/4 Cor. Sec. 28, T.28N., R56E., P.M.M., Roosevelt County

- Original Record: In 1947, William H. Teller set an iron spike, 20" long, 1/2" diam., flush with top of pavement of Hwy. 2, from which, an iron post, 3' long, 1" diam., set 34" in the ground, for a reference monument, bears North, 45lks. dist., with brass cap marked S28 RM 1947, and an arrow pointing to the corner. An iron post, 3' long, 1" diam., set 34" in the ground, for a reference monument, bears South, 45lks. dist., with brass cap marked S27 RM 1947, and an arrow pointing to the corner.
- Found: In 1997, HKM Associates, found brass cap reference monument 2" below ground, 2.7' south of E-W-N fence intersection. There is no trace of old Hwy., Hwy 2 has been moved to the south. 1/4 corner falls under MDT gravel pile.
- Set: In 1997, HKM Associates, set a 5-1/2' galvanized steel post as a witness post 0.4' north of reference monument.
- Found: In July 2007, MDT Survey Crew 41-86 found an iron pin 0.5' below ground and found reference monuments 30' north and south of the corner. The brass cap is missing from the reference monument to the north.
- Set: In July 2007, MDT Survey Crew 41-86 set a 2" aluminum cap on found iron pin, stamped as shown below.



SKETCH OF CORNER

CERTIFICATION

I, Brent Silha
 certify the information shown herein is true and correct.

Brent Silha
 Signature of Ground Party Chief

I, Mark A. Iwaniak,
 certify that this Corner Record correctly represents work performed by me or under my direction in compliance with the "Corner Recordation Act" (70-22-101, et seq., MCA)

Mark A. Iwaniak
 Signature of Surveyor & Seal

Date: 8/15/07 Registration No. 13236LS
 Employer: Montana Department of Transportation

Office of Clerk and Recorder, County of _____, This "corner record" was filed for record on _____, was noted on cross-index plat, and is assigned Page No. _____, in Book No. _____

Section 28

● = Corner this sheet

County Official