

1. Original and/or subsequent record used to evaluate the corner position.
2. Description of evidence found, note discrepancies in the record, state method of establishing lost or obliterated corners.
3. Description of monument and accessories set to perpetuate the corner position.
4. Sketch of corner, show all pertinent data which can best be shown in a sketch example, corner marking, topography ties, position of accessories, etc.
5. Certification must be signed and sealed by Land Surveyor registered in the State of Montana.
6. Fill in Cross Index & Section Diagram at bottom of sheet.

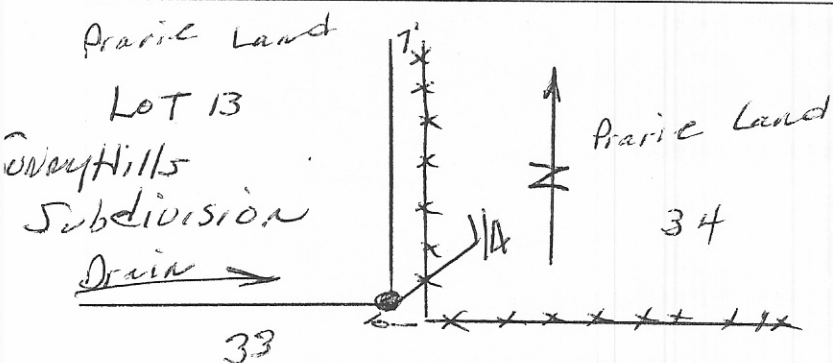
March 1985

CERTIFIED CORNER RECORDATION

Corner 1/4 T. 29N R. 39E P.M.M. Valley County

Found Bronze Moun for the 1/4 corner sections 33-34 T29N Rge 39E, in excellent condition.

The notes for same 1946 true and correct fences installed later dates on sketch
 General slope to west drainage to east - no erosion - not cultivated prairie grass - excellent stand -



SKETCH OF CORNER

CERTIFICATION

I, _____
 certify the information shown herein is true and correct.

Signature Ground Party Chief

I, _____
 certify that this Corner Record correctly represents work performed by me or under my direction in compliance with the "Corner Recordation Act" (70:22-101, et seq., M.C.A.)

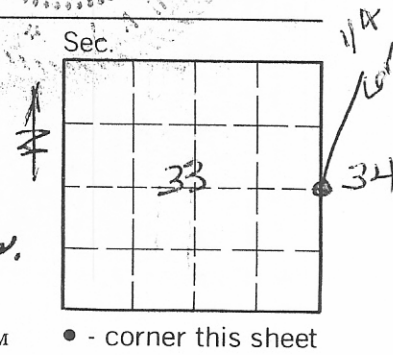
Emogene W. Best
 Signature of Surveyor & Seal

Date: 3-26-85 Reg. No. 5465

Employer: _____

STATE OF MONTANA
 Office of Clerk and Recorder, County of VALLEY. This "corner record" was filed for record on MARCH 26th, 1985 at 3:00 P.M. was noted on the cross-index plat and is assigned page No. 658, in book No. 1
 FEE: DH

Mary Ann Gadi by Mary Ann Gadi, Rep.
 County Official



Cross Index No. X-13 T. 29N R. 39E P.M.M.