

Kolstad, Rey

CERTIFIED LAND CORNER RECORDATION

Corner South 1/4 Corner Section 22 T. 29 N, R. 39 E, P.M.M.

GLO Record

West on True line between sections 22 and 27.

30:50 Ch Dry channel 3 feet deep ~~cause~~ S and ascend

40:00 Set granite stone 12 x 9 x 7 inches 8 inches in the ground for 1/4 section corner marked, 1/4 on N face. Dug pits 18 x 18 x 12 East and West of stone 5 1/2 feet dist. and raised a mound of earth 1 1/2 feet high 3 1/2 feet along side.

Evidence Found

12 x 9 x 7 inch granite stone, marks illegible and stone set in ground 4" with re-bar along side, also evidence of ancient fence N-S line, also dry creek 630 ± feet to east, agreeing with terrain call, also agreeing with elevation calls.

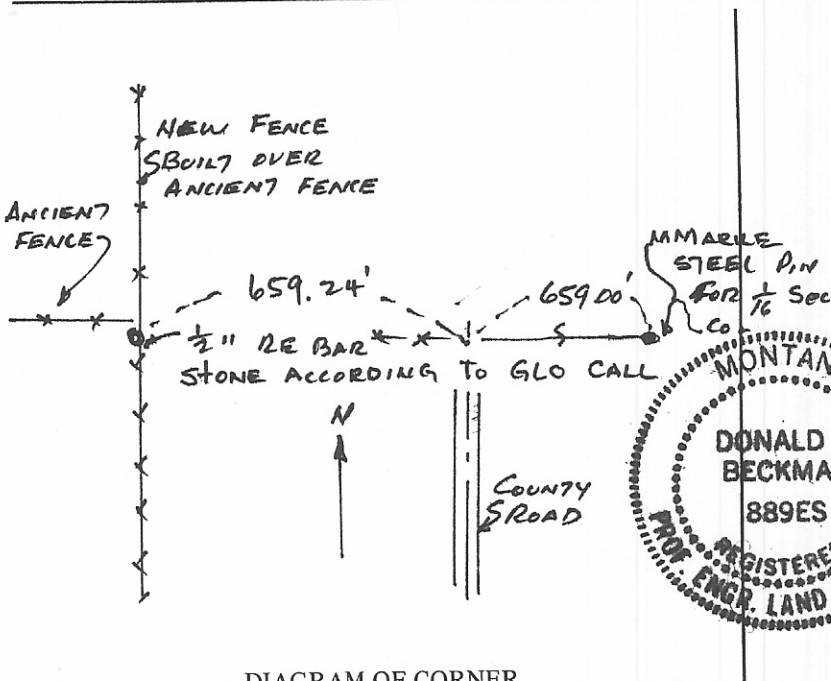


DIAGRAM OF CORNER

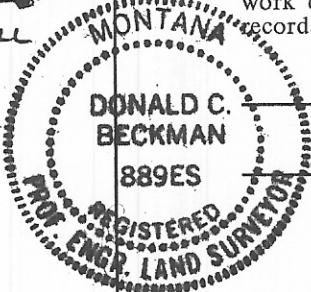
I, D.C. Beckman
certify that the information shown herein is true and correct.

D.C. Beckman
Signature of Ground Party Chief

I, D. C. Beckman
certify that I have carefully performed or reviewed the work done on the diagrammed corner as reported on this recordation form and approve the same.

D. C. Beckman
Signature of Surveyor

6 Nov 81 Date 889 ES Registration Number



STATE OF MONTANA
Office of Clerk and Recorder, County of VALLEY
This "corner record" was filed for record on the 6th day of NOVEMBER 1981 at 3:40 P.M.
and is assigned page No. 1 in book No. 456
of Corner Recordations

By Mary Lou Eide County Official
By Bertha E. Bretzke Deputy
Cross Index No. R, 15 T. 29 N R. 39 E P.M.M.