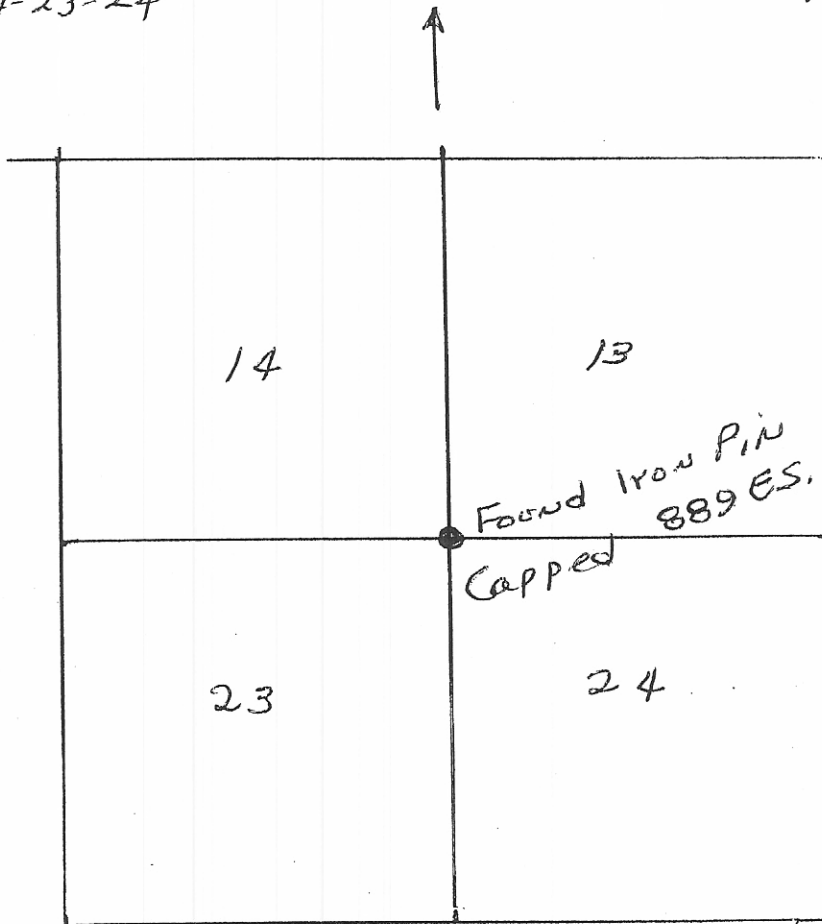


INSTRUCTIONS

1. Original and/or subsequent record used to evaluate the corner position.
2. Description of evidence found, note discrepancies in the record, state method of establishing lost or obliterated corners.
3. Description of monument and accessories set to perpetuate the corner position.
4. Sketch of corner, show all pertinent data which can best be shown in a sketch example, corner marking, topography ties, position of accessories, etc.
5. Certification must be signed and sealed by Land Surveyor registered in the State of Montana.
6. Fill in Cross Index & Section Diagram at bottom of sheet.

CERTIFIED CORNER RECORDATION

Corner Section Corner T. 29N R. 39E P.M.M. Valley County
Common Secs. 13-14-23-24



CERTIFICATION

I, _____
 certify the information shown herein is true and correct.

Signature Ground Party Chief

I, E.V. Best
 certify that this Corner Record correctly represents work performed by me or under my direction in compliance with the "Corner Recordation Act" (70-22-101, et seq., M.C.A.)

Signature of Surveyor & Seal

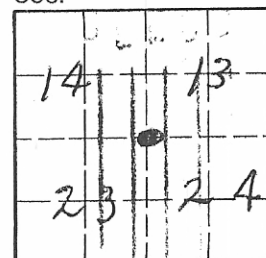
Date: April 11 Reg. No. 5265

Employer: _____

SKETCH OF CORNER

STATE OF MONTANA
 Office of Clerk and Recorder, County of VALLEY. This "corner record" was filed for record on APRIL 12, 1985 at 1:45 P.M. was noted on the cross-index plat and is assigned page No. 668, in book No. 1 of Corner Records.
 By Bertha Britzke Deputy Mary Lou Eide County Official
 FEE: DH
 Cross Index No. N 21 T. 29N R. 39E P.M.M.

Sec. 12 13 23 24



• - corner this sheet