

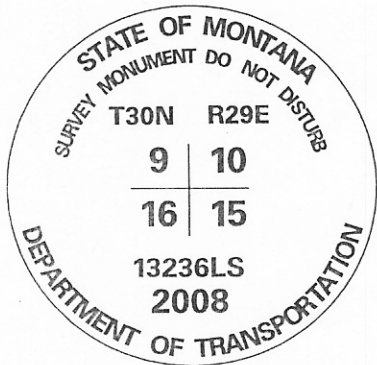
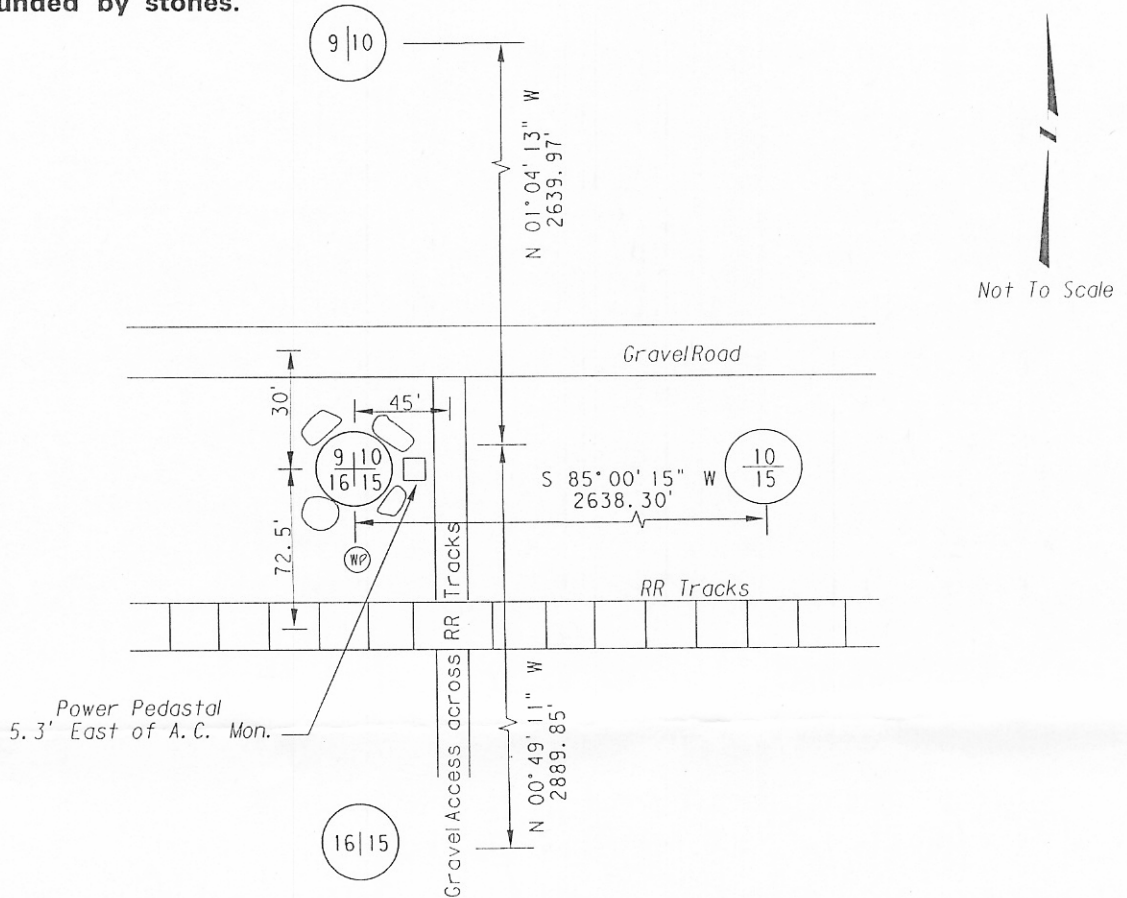
CERTIFIED CORNER RECORDATION

Corner: SE Cor Sec. 9, T.30N., R29E., P.M.M., Phillips County

Original Record: In 1891 James and Rodney Page set a sandstone 14x10x6 ins. in the ground for cor to secs. 9, 10, 15 and 16 marked with 4 notches on S. and 3 notches on E. edges and dug pits in each sec 5 1/2' dist. and raised a mound of earth 2 ft. high 4 1/2ft. base.

Found: In 2008 MDT Survey Crew 41-86 searched for but found no evidence of corner.

Set: In 2008 MDT Survey Crew 41-86 set a 3 1/4" A.C. monument at the correct position using 3-point proportion from found corners north, east and calculated corner to the west. Monument falls 72.5' north of CL of railroad tracks and matches GLO field notes from original surveyors position north of tracks. Also falls 30' south of CL of gravel road running E. and W. Monument is 5.3' west of a power pedastal and 45' west of CL of gravel access road leading across RR tracks. Monument is 6" above ground and surrounded by stones.



SKETCH OF CORNER

CERTIFICATION

I, Steve Grove
certify the information shown herein is true and correct.

Steve Grove

Signature of Ground Party Chief

I, Mark A. Iwaniak,
certify that this Corner Record correctly represents work performed by me or under my direction in compliance with the "Corner Recordation Act" (70-22-101, et seq., MCA)

Signature of Surveyor & Seal

Date: _____ Registration No. #13236LS

Employer: Montana Department of Transportation

Office of Clerk and Recorder, County of _____ This "corner record" was filed for record on _____, was noted on cross-index plat, and is assigned Page No. _____, in Book No. _____

County Official

Section 9

● = Corner this sheet