

CR-921  
334744

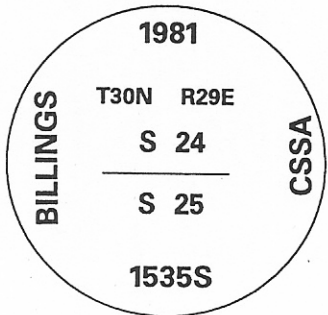
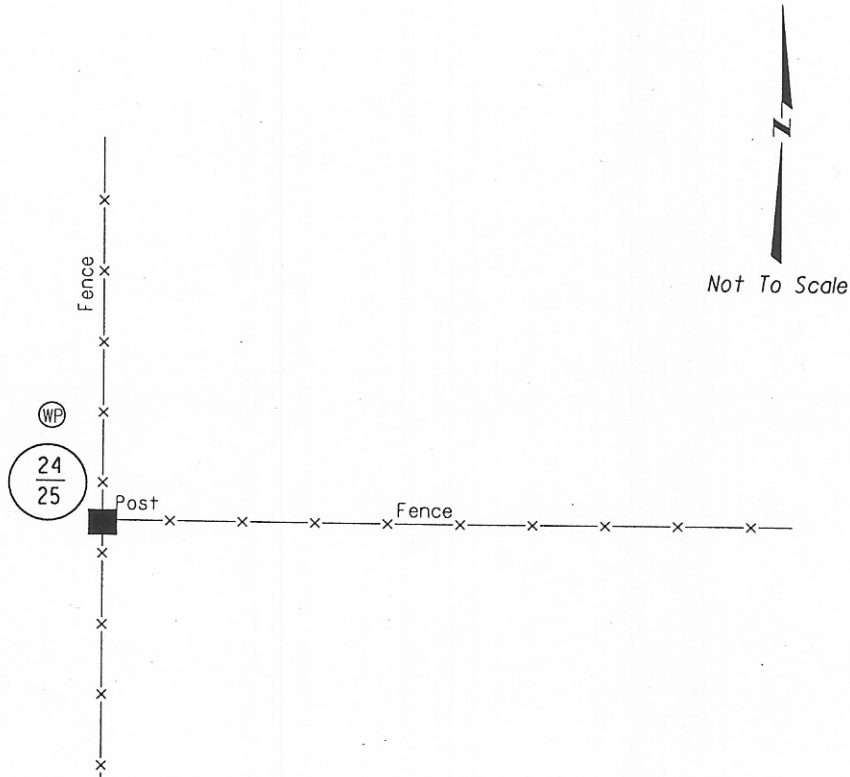
# CERTIFIED CORNER RECORDATION

Corner: N1/4 Sec. 25 , T.30N., R29E., P.M.M., Phillips County

Original Record: In 1891, James M. and Rodney W. Page set a granite stone in the ground for corner to sections 24 and 25.

Found: In 2006 MDT Survey Crew 41-86 found brass cap in place 4" above ground and 6" northwest of a fence post.

Set: In 2006 MDT Survey Crew 41-86 set and MDT witness post 6" north of the cap.



SKETCH OF CORNER

## CERTIFICATION

I, Steve Grove  
certify the information shown herein is true and correct.

*Steve Grove*  
Signature of Ground Party, Chief

I, Mark A. Iwanlak,  
certify that this Corner Record correctly represents work performed by me or under my direction in compliance with the "Corner Recordation Act" (7Q-22-100 ANR seq., MCA)  
: No. 13236 LS :

*Mark A. Iwanlak*  
Signature of Surveyor & Seal

Date: 6-15-06 Registration No. #13236LS

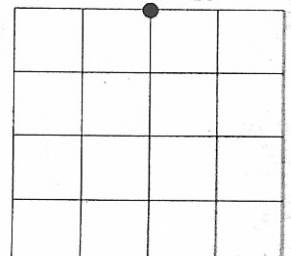
Employer: Montana Department of Transportation

Office of Clerk and Recorder  
record" was filed for record  
on cross-index plat, and is

334744 B-CR P-0921  
PHILLIPS COUNTY Fee \$ 0.00  
Filed 06/16/2006 At 02:10 PM  
Laurel N Hines, Clerk and Recorder  
BY *Supreme M. Hines*, Deputy

County Official

Section 25



● = Corner this sheet