

INSTRUCTIONS

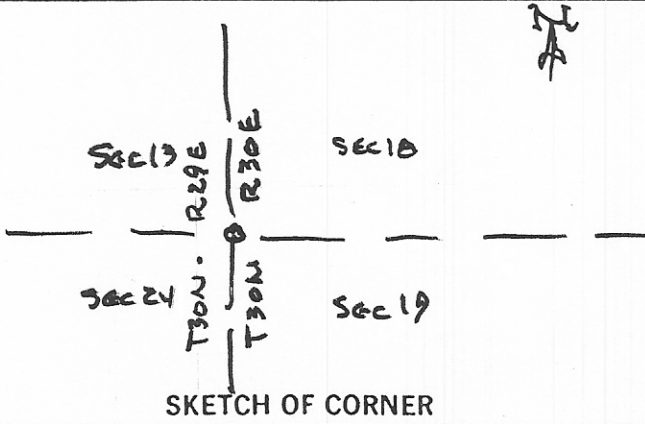
1. Original and/or subsequent record used to evaluate the corner position.
2. Description of evidence found, note discrepancies in the record, state method of establishing lost or obliterated corners.
3. Description of monument and accessories set to perpetuate the corner position.
4. Sketch or corner, show all pertinent data which can best be shown in a sketch example, corner marking, topography ties, position of accessories, etc.
5. Certification must be signed and sealed by Registered Land Surveyor in State of Montana.
6. Fill in Cross Index & Section Diagram at bottom of sheet.

CERTIFIED CORNER RECORDATION

Corner SW 1/4 Sec 18 (on Township Line) T. 30N R. 30E P.M.M. Phillips County

THE SW CORNER OF SEC 18 LIES ALONG SIDE A GRASS RUNWAY AT THE MALTA, MT AIRPORT, AND THE ORIGINAL STONE MONUMENT WAS DAMAGED BY EQUIPMENT DURING CONSTRUCTION OF THE RUNWAY. I REPLACED THE IDENTIFIABLE STONE, NOT DISTURBED IN LOCATION, WITH A CONCRETE MONUMENT WITH A BRASS CAP.

234412



CERTIFICATION
 I, LEON R. MOGANN, P.C.
 certify the information shown herein is true and correct.

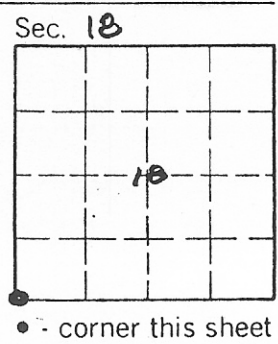
 Signature Ground Party Chief
 I, LEON R. MOGANN
 certify that this Corner Record correctly represents work performed by me or under my direction in compliance with the "Corner Recordation Act" (76-22-103 et seq., M.D.A.)

 Signature of Surveyor & Seal
 Date: July 28 1979 Reg. No. 569ES
 Employer: SELF

Office of Clerk and Recorder, County of _____ . This "corner record" was filed for record on the _____ day of 19 _____, was noted on the cross-index plat and is assigned page No. _____ ; in book No. _____

County Official

Cross Index No. Sec 18 T. 30N R. 30E P.M.M.
N-1



NA ↑