

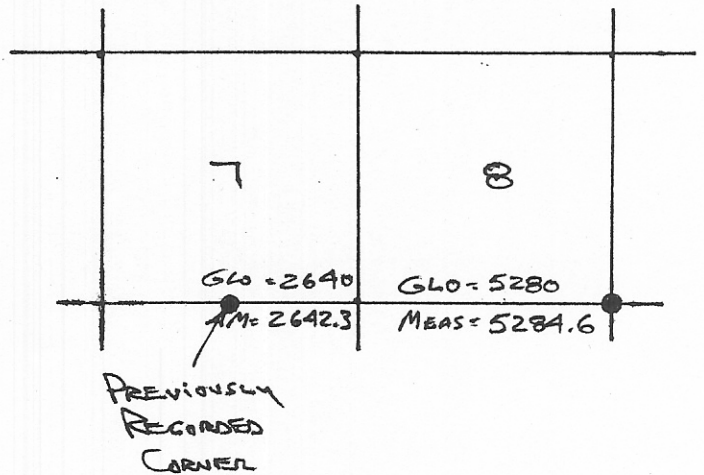
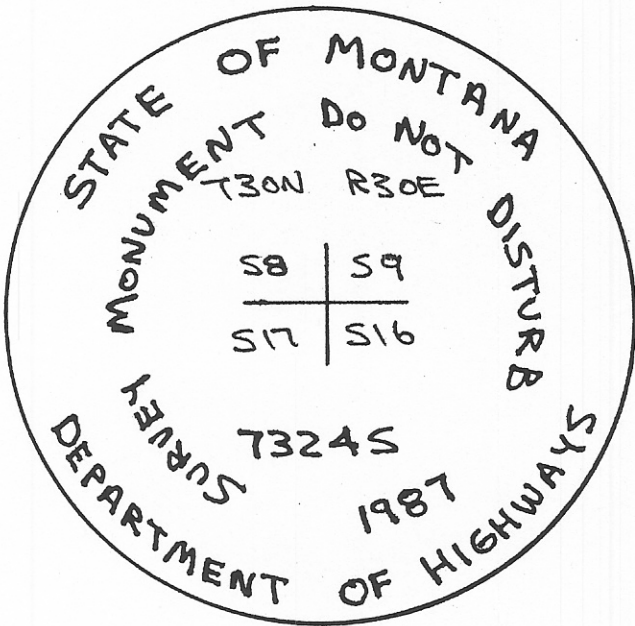
INSTRUCTIONS

1. Original and/or subsequent record used to evaluate the corner position.
2. Description of evidence found, note discrepancies in the record, state method of establishing lost or obliterated corners.
3. Description of monument and accessories set to perpetuate the corner position.
4. Sketch of corner, show all pertinent data which can best be shown in a sketch example, corner marking, topography ties, position of accessories, etc.
5. Certification must be signed and sealed by Land Surveyor registered in the State of Montana.
6. Fill in Cross Index & Section Diagram at bottom of sheet.

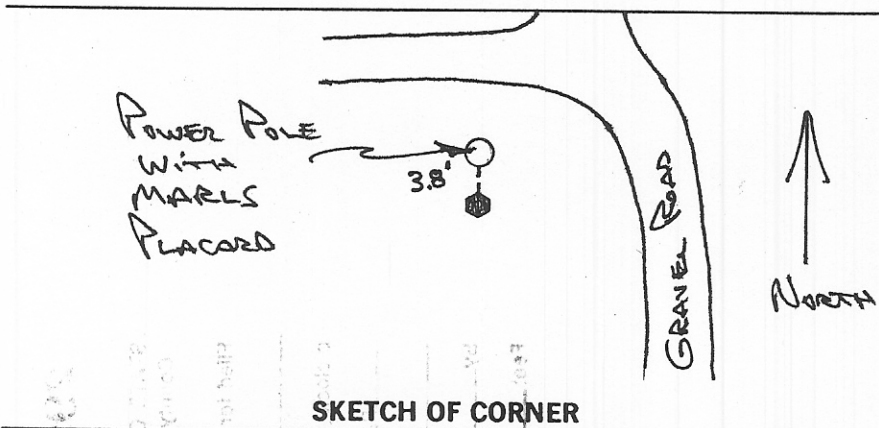
CERTIFIED CORNER RECORDATION

Corner Southeast Corner Section 8 T. 30N R. 30E P.M.M. Phillips County

1. Set a granite stone 14x9x5 inches, 10 inches in the ground for Corner to Sections 8, 9, 16 and 17, marked with 4 notches on South and East edges. Dug pits 18x18x12 inches in each section 5½ feet distance and raised a mound of earth 2 feet high, 4½ foot base along side.
2. Found a 1" smooth iron at this location, 3.8 feet South of an existing power pole. Road construction has destroyed original stone and its accessories. 1" iron pipe has been used by previous surveys in the area and fits possession lines well. I accepted the 1" iron as the corner as it is the best available evidence of the corners location and fits distances to the West very well. See tie below. History of iron could not be traced, and no reason for moving the corner location could be justified.
3. I buried 1" iron and replaced with a Montana Department of Highways 30"x2.5" aluminum monument and stamped as shown below. See C.O.S. on file.



INTERSTATE ENGINEERING, INC.
Box 648
Sidney, Montana 59270



SKETCH OF CORNER

MONTANA
CERTIFICATION
I, GREGORY L. JOHNSON
7324LS
Signature Ground Party Chief

I, Gregory L. Johnson
certify that this Corner Record correctly represents work performed by me or under my direction in compliance with the "Corner Recordation Act" (70-22-101, et seq., M.C.A.)

Gregory L. Johnson
Signature of Surveyor & Seal

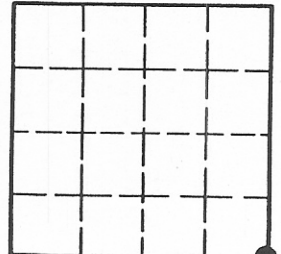
Date: June 87 Reg. No. 7324 L.S.

Employer: _____

Office of Clerk and Recorder, County of _____ . This "corner record" was filed for record on _____ was noted on the cross-index plat and is assigned page No. _____ , in book No. _____

County Official

Sec. Eight



• - corner this sheet

Cross Index No. J-9 T. 30N R. 30E P.M.M.