

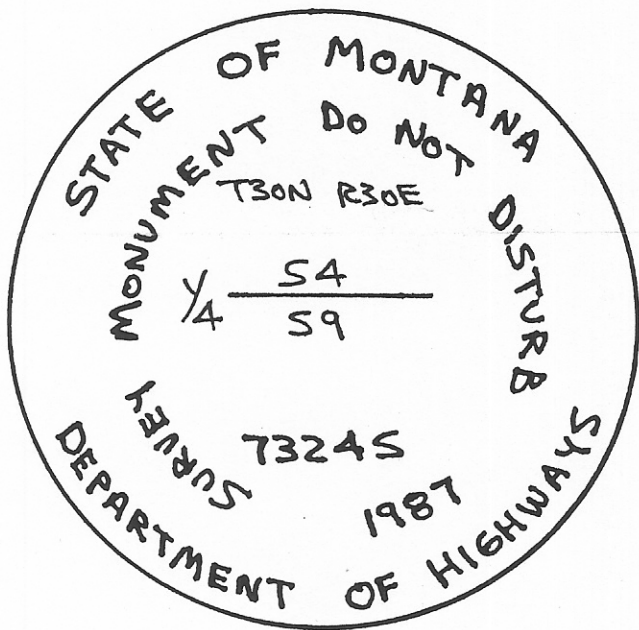
INSTRUCTIONS

1. Original and/or subsequent record used to evaluate the corner position.
2. Description of evidence found, note discrepancies in the record, state method of establishing lost or obliterated corners.
3. Description of monument and accessories set to perpetuate the corner position.
4. Sketch of corner, show all pertinent data which can best be shown in a sketch example, corner marking, topography ties, position of accessories, etc.
5. Certification must be signed and sealed by Land Surveyor registered in the State of Montana.
6. Fill in Cross Index & Section Diagram at bottom of sheet.

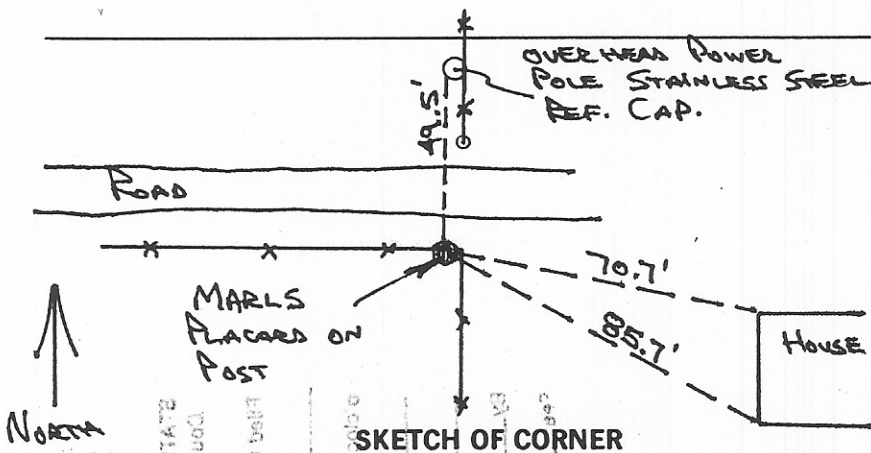
CERTIFIED CORNER RECORDATION

Corner North 1/4 Corner Section 9 T. 30N R. 30E P.M.M. Phillips County

1. Set a post 3 feet long 3 inches square with marked stone 12 inches in the ground for 1/4 Section corner marked 1/4 S. on North face: dug pits 18x18x12 inches East and West of stone 5 1/2 feet distance and raised a mound of earth 1 1/2 feet high 3 1/2 foot base around post.
2. This corner has been destroyed by farming and ditching operations in the area. This area has been resurveyed in part by the U.S.B.R. An effort to recover the U.S.B.R. survey or plat was made to no avail. Local District office can not find plats for this area and could offer no more assistance as to the corner location. Testimony from Verniece Sigbrecht a landowner in Sections 9 & 4 who has occupied a farmstead in this area since about 1932 was used to determine the corner location. The corner was placed at the location shown to us by her. (See back of Recordation for Statement).
3. I set Montana Department of Highways aluminum monument 2.5"x30" stamped as shown below at the corner location.



INTERSTATE ENGINEERING, INC.  
Box 648  
Sidney, Montana 59270



I, GREGORY L. JOHNSON 73241S  
 certify the information shown herein is true and correct.  
 Signature Ground Party Client

I, Gregory L. Johnson  
 certify that this Corner Recordation represents work performed by me or under my direct supervision in accordance with the "Corner Recordation Act" (70-22-101 M.C.A.)

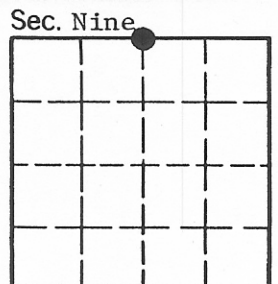
Gregory L. Johnson  
 Signature of Surveyor & Seal

Date: June 87 Reg. No. 7324 L.S.

Employer: \_\_\_\_\_

Office of Clerk and Recorder, County of \_\_\_\_\_ . This "corner record" was filed for record on \_\_\_\_\_ was noted on the cross-index plat and is assigned page No. \_\_\_\_\_ , in book No. \_\_\_\_\_

County Official



• - corner this sheet

Cross Index No. E-11 T. 30N R. 30E P.M.M.