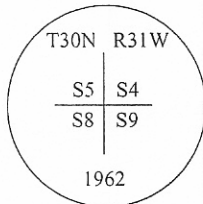


CERTIFIED CORNER RECORDATION

Corner **SW Sec. Corner** **Sec. 4** **T. 30N** **R. 31W** **P.M, MT** **Lincoln** **County**

I. 1893 G.L.O. original record by Daniel P. Mumbrue: Set a post and four bearing trees.

1962 B.L.M. Remonumentation record by G. F. Pittman, R. L. Larimer, and H. W. Grusing: The corner of secs. 4, 5, 8, and 9, as determined from the remains of the original bearing trees. At the corner point, set an iron post, 30 ins. long, 2 1/2 ins. diam., 26 ins. in the ground, with brass cap marked:



from which:
The remains of the original bearing trees:

- A decayed stump, bears N58° 50'E, 52 lks. dist., with scribing "T31N W S4" visible. (Record "T30N...")
- A decayed stump, bears S60 1/2°E, 46 lks. dist., with scribing "T30N R31W" visible.
- A burnt and decayed stump, bears S25°W, 10 lks. dist., with no scribing readable.
- A decayed stump, bears N35 1/2°W, 38 lks. dist., with no scribing readable.

Established 4 new bearing trees:

- A larch, 7 ins. diam., bears N63°E, 21 lks. dist., mkd "T30N R31W S4 BT".
- A larch, 7 ins. diam., bears S38°E, 39 lks. dist., mkd "T30N R31W S9 BT".
- A larch, 6 ins. diam., bears S46°W, 25 lks. dist., mkd. "T30N R31W S8 BT".
- A larch, 6 ins. diam., bears N61°W, 41 lks. dist., mkd. "T30N R31W S5 BT"

II. Found a B.L.M. brass cap, 2 ins. above ground, mkd. as shown above, from which:

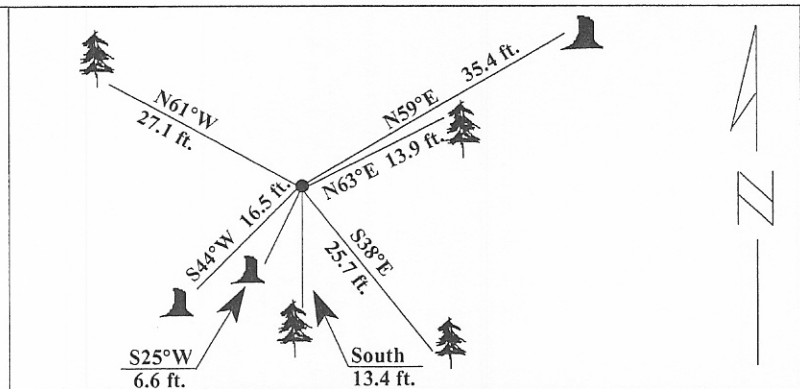
- A decayed stump, bears N59°E, 35.4 ft. (54lks.) dist., with no visible scribing. (G.L.O. record 52 lks.)
- A larch, 14 ins. diam., bears N63°E, 13.9 ft. (21 lks.) dist., with healed face. (B.L.M.)
- A larch, 12 ins. diam., bears S38°E, 25.7 ft. (39 lks.) dist., with healed face. (B.L.M.)
- A decayed stump, bears S25°W, 6.6 ft. (10 lks.) dist., with no visible scribing. (G.L.O.)
- A stump, 11 ins. diam., bears S44°W, 16.5 ft. (25 lks.) dist., with visible scribing. (B.L.M. record S46°W)
- A larch, 11 ins. diam., bears N61°W, 27.1 ft. (41 lks.) dist., with healed face. (B.L.M.)
- A steel guard post, bears South, 2.0 ft. dist.

III. Established one new bearing tree:

A fir, 5 ins. diam., bears South, 13.4 ft dist., mkd. "X BT".

Painted red bands around the bearing trees and attached Land Survey Monument and Bearing Tree signs.

Magnetic Declination: 20° East



SKETCH OF CORNER

CERTIFICATION

I. Rex O. Rice
certify the information shown herein is true and correct.

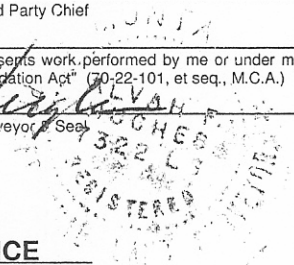
Signature Ground Party Chief

I, Alvah F Hughes
certify that this Corner Record correctly represents work performed by me or under my direction in compliance with the "Corner Recordation Act" (70-22-101, et seq., M.C.A.)
Alvah F. Hughes
Signature of Surveyor & Seal

Date: 1/12/96

Reg. No.: 7322LS

Employer: U.S. FOREST SERVICE

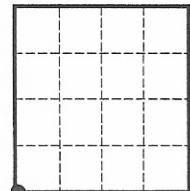


Office of Clerk and Recorder, County of LINCOLN. This "corner record" was filed for record on JULY 29, 1997 was noted on the cross-index plat and is assigned page No. 9754 in book No. _____

CORAL M. CUMMINGS

County Official *By OEB*

Sec. 4



● - corner this sheet

Cross Index No. E-09 T. 30N R. 31W PMM