

**INSTRUCTIONS**

1. Original and/or subsequent record used to evaluate the corner position.
2. Description of evidence found, note discrepancies in the record, state method of establishing lost or obliterated corners.
3. Description of monument and accessories set to perpetuate the corner position.
4. Sketch of corner, show all pertinent data which can best be shown in a sketch example, corner marking, topography ties, position of accessories, etc.
5. Certification must be signed and sealed by Land Surveyor registered in the State of Montana.
6. Fill in Cross Index & Section Diagram at bottom of sheet.

**CERTIFIED CORNER RECORDATION**

Corner 1/4 of secs. 31 & 36 T. 30N R. 31W P.M.M. Lincoln County

I. 1893 GLO Record: Set a post, 3 ft. long, 3 ins. square, 24 ins. in the ground for 1/4 sec. cor., marked 1/4 S. on W. face.

1964 BLM Remonumentation: The 1/4 cor. of secs. 31 of T30N R30W and 36 of T30N R31W monumented with a disintegrated wooden post firmly set, and witnessed by the remains of original bearing trees. At the corner point set an iron post, 30 ins. long, 2 1/2 ins. diam., 27 ins. in the ground with brass cap marked as shown, from which

The original bearing trees:

- A stump, 22 ins. diam., bears S17°E, 70 lks. dist., visible marks BT
- A stump, 24 ins. diam., bears N70°W, 14 lks. dist., visible marks BT

The new bearing trees:

- A fir, 8 ins. diam., bears S31°E, 141 lks. dist., marked 1/4 S31 BT

Raise a mound of stone, 2 ft. base, 1 1/2 ft. high W. of the iron post. Bury the remains of the original wooden post alongside pipe.

II. BLM brass cap on 30 ins. of iron pipe was removed from corner point site and found in Libby District junk yard. The corner point falls in cut slope of new road, from which

- A fir, 16 ins. diam., bears S31°E, 141 lks., scribing is overgrown

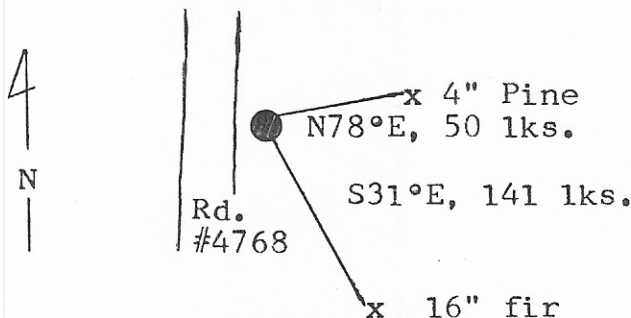
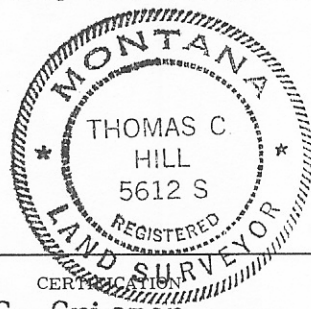
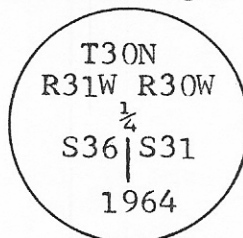
III. Reset the 1964 B.L.M. iron pipe with brass cap, in road cut slope, 24 ins. in the ground, from remaining bearing tree.

The new bearing tree:

- A pine, 4 ins. diam., bears N78°E, 50 lks., scribed X BT

Set a 6 ft. steel post with "Survey Marker" decal, east, 3 lks. from corner.

Painted red 6" bands and scribe blazes of bearing trees; posted "Attention" signs on back of trees. Bearing tree sign attached to new tree.



**SKETCH OF CORNER**

CERTIFICATION

I, Gary C. Crismon  
 certify the information shown herein is true and correct.  
*Gary C. Crismon*  
 Signature Ground Party Chief

I, Thomas C. Hill  
 certify that this Corner Record correctly represents work performed by me or under my direction in compliance with the "Corner Recordation Act" (70-22-101, et seq., M.C.A.)  
*Thomas C. Hill*  
 Signature of Surveyor & Seal

Date: 7/9/84 Reg. No. 5612S  
 Employer: U.S. Forest Service

Office of Clerk and Recorder, County of Lincoln. This "corner record" was filed for record on September 21<sup>st</sup> 1984 was noted on the cross-index plat and is assigned page No. 2756, in book No. \_\_\_\_\_

*Janet B. F. Siegel* by *Karen R. Kampe*  
 County Official Deputy

