

INSTRUCTIONS

1. Original and/or subsequent record used to evaluate the corner position.
2. Description of evidence found, note discrepancies in the record, state method of establishing lost or obliterated corners.
3. Description of monument and accessories set to perpetuate the corner position.
4. Sketch of corner, show all pertinent data which can best be shown in a sketch example, corner marking, topography ties, position of accessories, etc.
5. Certification must be signed and sealed by Land Surveyor registered in the State of Montana.
6. Fill in Cross Index & Section Diagram at bottom of sheet.

CERTIFIED CORNER RECORDATION

Corner Sections 19, 20, 29 and 30 T. 31 N. R. 31 W. P.M.M. Lincoln County

1893 Original GLO Record by Mumbrue

Set a post 4 ft. long, 4 ins. square, 24 ins. in the ground, for Cor. to Secs. 19, 20, 29 & 30 marked T31W S.20 on N.E., R31W S.29 on S.E., S.30 on S.W. and S.19 on N.W. faces, with 2 notches on S. and 5 notches on E. edges; from which

- A fir, 16 ins. diam., bears N.18-3/4° E., 9 lks. dist., marked T31N R31W, S.20 BT.
- A fir, 12 ins. diam., bears S.42-1/4° E., 35 lks. dist., marked T31N R31W, S.29 BT.
- A tamarack 36 ins. diam. bears S.78-1/2° W., 29 lks. dist. marked T31N R31W, S.30 BT.
- A tamarack, 16 ins. diam., bears N.56-3/4° W., 82 lks. dist., marked T31N R31W, S.19 BT.

1963 BLM Remonumentation by Pittman, Larimer and Crusing

The cor. of secs. 19, 20, 29, and 30, as determined from the remains of one of the original bearing trees. At the corner point

Set a steel reinforcing rod, 18 ins. long, 1/2 ins. diam., 20 ins. in the ground.

The remains of the original bearing trees:

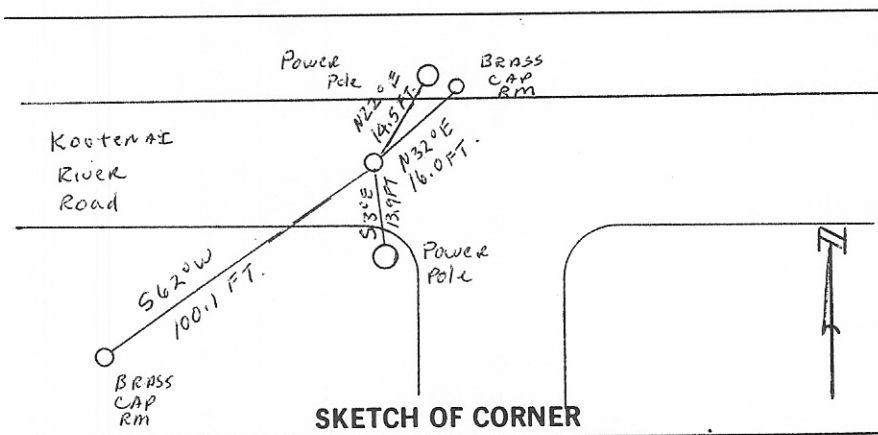
- A stump, 20 ins. diam., bears N.56-3/4° W., 82 lks. dist., visible marks T31R. (Record)
- An iron post, 30 ins. long, 2-1/2 ins. diam., set 27 ins. in the ground, for a reference monument, bears N.31-3/4° E., 16 ft. dist., with brass cap mkd. T31N R31W S20 RM 16 FT and an arrow pointing to the corner.
- An iron post, 30 ins. long, 2-1/2 ins. diam., set 27 ins. in the ground, for a reference monument, bears S.62-1/2° W., 100.2 ft. dist., with brass cap mkd. T31N R31W S30 RM 100.2 FT and an arrow pointing to the corner.
- A power pole, bears N.22° E., 22 lks. dist., mkd. "X" at base of pole.
- A power pole, bears S.3° E., 21 lks. dist., mkd. "X" at base of pole.

Corner is situated at the intersection of Kootenai River Road, bearing E. and W., and a fence extending South.

II. I found a 5/8 in. diam. rebar, 0.1 ft. below the paved surface of Kootenai River Road. from which

- A power pole bears N.22° E., 14.5 ft. dist., marked "X" at base.
- A BLM iron pipe, with brass cap, bears N.32° E., 16.0 ft. dist., marked T31N R31W S 20 RM 16.0 FT.
- A power pole bears S.3° E., 13.9 ft. dist., marked "X" at base.
- A BLM iron pipe, with brass cap, bears S.62° W., 100.1 ft. dist., marked T31N R31W S 30 RM 100 FT.

III. I set a steel guard post by the BLM RM's with Land Survey Monument decal attached and painted red the "X"'s on the base of the power poles.



CERTIFICATION

I, Steven Boyer
certify the information shown herein is true and correct.
Steven A. Boyer
Signature Ground Party Chief

I, Alvah F. Hughes
certify that this Corner Record correctly represents work performed, by me or under my direction in compliance with the "Corner Recordation Act" (70-22-101, et seq., M.C.A.).
Alvah F. Hughes
Signature of Surveyor Seal 7322 LS

Date: 9/20/88 Reg. No. 7322
Employer: U.S. FOREST SERVICE

Office of Clerk and Recorder, County of Lincoln. This "corner record" was filed for record on Oct 3, 1988 was noted on the cross-index plat and is assigned page No. 3914 in book No. _____

Janet B. Sugel by Bill Buckley
County Official

Sec. 20

Cross Index No. R-5 T. 31 NR. 31 W PMM