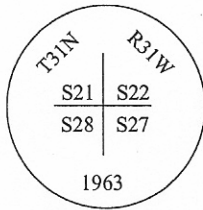


CERTIFIED CORNER RECORDATION

Corner **SE Sec. Corner** **Sec. 21** **T. 31N** **R. 31W** **P.M, MT** **Lincoln** **County**

I. 1893 G.L.O. original record by Daniel P. Mumbrue: Set a post and four bearing trees.

1963 B.L.M. remonumentation record by G. F. Pittman, R. L. Larimer, and H. W. Grusing: The corner of secs. 21, 22, 27 and 28, as determined by the remains of the original bearing trees. At the corner point, set an iron post, 30 ins. long, 2 1/2 ins. diam., 26 ins. in the ground, with brass cap marked:



The remains of the original bearing trees:

- A stump, 16 ins. diam., bears N79°E, 28 lks. dist., mkd. "T31N R31W S22 BT". (Record N77 1/4°E)
- A stump, 12 ins. diam., bears S46 3/4°E, 16 lks. dist., with illegible marks. (Record S53°E)
- A stump, 36 ins. diam., bears S20°W, 57 lks. dist., with marks "31N 1W S28 BT" visible.
- A stump, 24 ins. diam., bears N28 1/2°W, 65 lks. dist., with illegible marks. (Record N26 1/4°W)

Established 3 new bearing trees:

- A fir, 8 ins. diam., bears N22°E, 49 lks. dist., mkd "T31N R31W S22 BT".
- A fir, 14 ins. diam., bears S2°W, 29 lks. dist., mkd "T31N R31W S28 BT".
- A pine, 4 ins. diam., bears N42 1/4°W, 15 lks. dist., mkd. "X BT".

II. Found a B.L.M. brass cap, 2 ins. above ground, mkd. as shown above, from which:

- A fir, 14 ins. diam., bears N22°E, 32.3 ft. (49 lks.) dist., with healed face. (B.L.M.)
- A stump, bears N77°E, 18.5 ft. (28 lks.) dist., with visible scribing. (G.L.O.)
- A stump, bears S53°E, 10.6 ft. (16 lks.) dist., with visible scribing. (G.L.O.)
- A fir, 23 ins. diam., bears S2°W, 85.1 ft. (129 lks.) dist., with healed face. (B.L.M. record 29 lks.)
- A pine, 9 ins. diam., bears N42°W, 9.9 ft. (15 lks.) dist., with healed face. (B.L.M.)
- A stump, bears N26°W, 42.9 ft. (65 lks.) dist., with chop marks. (G.L.O.)

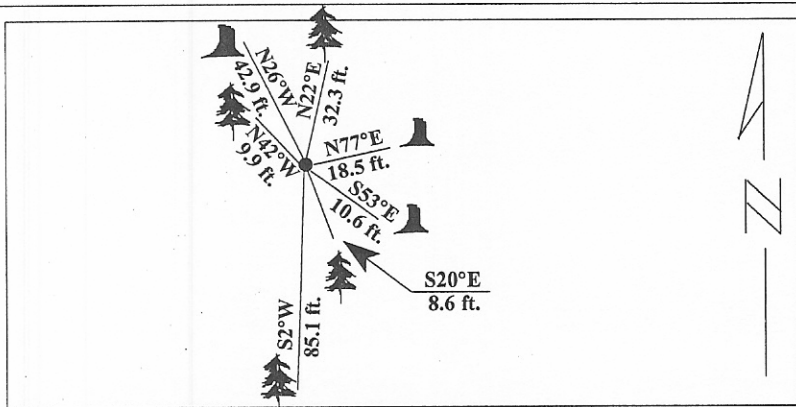
III. Established one new bearing tree:

- A pine, 7 ins. diam., bears S20°E, 8.6 ft dist., mkd. "T31N R31W S27 BT".

Painted red bands around the bearing trees and attached Land Survey Monument and Bearing Tree signs.

Set a steel guard post North, 3.0 ft. from corner, with Land Survey Monument and Property Boundary decals.

Magnetic Declination: 20° East



SKETCH OF CORNER

CERTIFICATION

I, Rex O. Rice

certify the information shown herein is true and correct.

Rex O. Rice

Signature Ground Party

I, Alvah F. Hughes

certify that this Corner Record correctly represents work performed by me or under my direction in compliance with the Corner Recordation Act, (70-22-101, et seq., M.C.A.)

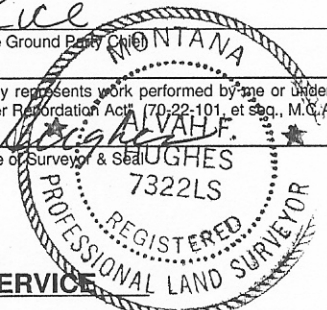
Alvah F. Hughes

Signature of Surveyor & Seal

Date: 1/11/96

Reg. No.: 7322LS

Employer: U.S. FOREST SERVICE

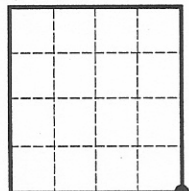


Office of Clerk and Recorder, County of LINCOLN This "corner record" was filed for record on JULY 29, 1997 was noted on the cross-index plat and is assigned page No. 9718 in book No. _____

CORAL M. CUMMINGS

County Official

Sec. 21



● - corner this sheet

Cross Index No. R-13 T. 31N R. 31W PMM