

- INSTRUCTIONS**
1. Original and/or subsequent record used to evaluate the corner position.
 2. Description of evidence found, note discrepancies in the record, state method of establishing lost or obliterated corners.
 3. Description of monument and accessories set to perpetuate the corner position.
 4. Sketch of corner, show all pertinent data which can best be shown in a sketch example, corner marking, topography ties, position of accessories, etc.
 5. Certification must be signed and sealed by Land Surveyor registered in the State of Montana.
 6. Fill in Cross Index & Section Diagram at bottom of sheet.

CERTIFIED CORNER RECORDATION

Corner 1/4 18 19 T. 31 N R. 33 W P.M.M. Lincoln County

RECORD:

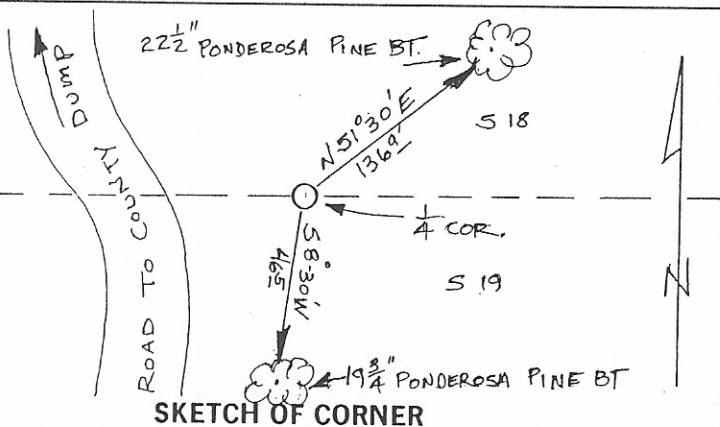
U.S. Deputy Surveyor Daniel P. Mumbrue surveyed the fractional subdivisions and meanders of T 31 N R 33 W during 1893.

Set a post 3 ft. long, 3 ins. square, 24 ins. in the ground for 1/4 Sec. Cor. marked 1/4 S. on N. face; from which:

A pine 30 ins. diam. bears N. 14 1/4° E., 44 lks. (29.04 ft.) dist. marked 1/4 S 18 BT.

A pine 34 ins. diam. bears S. 79 1/2° E., 42 lks. (27.72 ft.) dist. marked 1/4 S 19 BT.

On Pages 881 and 883 of the Lincoln County Corner Recordation books shows a found steel rod and two (2) Bearing Trees per Page 881 and a found BLM BC per Page 883.



SKETCH OF CORNER

CERTIFICATION

I, Brian Leisz
certify the information shown herein is true and correct.

Signature Ground Party Chief
Brian Leisz

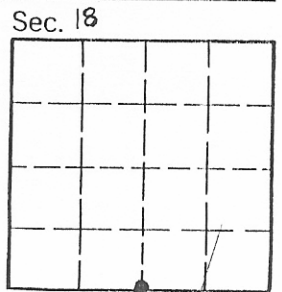
I, [Signature]
certify that this Corner Record correctly represents work performed by me or under my direction in compliance with the "Corner Recordation Act" (70-22-101, et seq., M.C.A.)

Signature of Surveyor & Seal
[Signature]

Date: 12/15 Reg. No. 4975-S

Employer: Davis Surveying, Inc.

Office of Clerk and Recorder, County of Lincoln. This "corner record" was filed for record on Dec 16, 1993 was noted on the cross-index plat and is assigned page No. 6000, in book No. _____, in Carol M Cummings by KCB County Official



Cross Index No. 1/4 Cor. T. 31 N R. 33 W P.M.M.

• - corner this sheet