

INSTRUCTIONS

1. Original and/or subsequent record used to evaluate the corner position.
2. Description of evidence found, note discrepancies in the record, state method of establishing lost or obliterated corners.
3. Description of monument and accessories set to perpetuate the corner position.
4. Sketch of corner, show all pertinent data which can best be shown in a sketch example, corner marking, topography ties, position of accessories, etc.
5. Certification must be signed and sealed by Land Surveyor registered in the State of Montana.
6. Fill in Cross Index & Section Diagram at bottom of sheet.

CERTIFIED CORNER RECORDATION

Corner N 1/4 Cor. of Sec. 5 T. 31 N. R. 33 W. P.M.M. Lincoln County

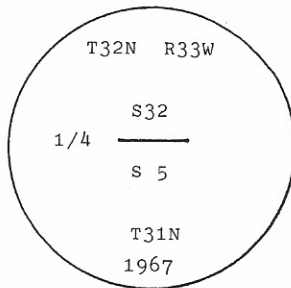
I. 1893 G.L.O. original record by D. P. MUMBRUE: Set a wooden post, 3 ft. long, 3 ins. square, 24 ins. in the ground, for 1/4 Sec. Cor., mkd. 1/4 S. on N. face; from which:

- A fir, 20 ins. diam., bears N22 1/2° W, 23 lks. (15.2 ft.) dist., mkd. 1/4 S. BT.
- A pine, 24 ins. diam., bears S46 1/2° W, 31 lks. (20.5 ft.) dist., mkd. 1/4 S. BT.

1967 B.L.M. remonumentation record by J. E. FRENCH: The 1/4 corner of secs. 5 and 32, on the N. bdy. of the Tp., identical with Cor. No. 1 of HES 411 and Cor. No.1 of HES 418, as determined from the remains of the original NW bearing tree:

- A fir, 24 ins. diam., bears N22 1/2° W, 23 lks. (15.2 ft.) dist., mkd. S. (G.L.O.- record)

At the corner point, set an iron post, 30 ins. long, 2 1/2 ins. diam., 24 ins. in the ground, with brass cap mkd.



Established two new bearing trees:

- A larch, 9 ins. diam., bears N24 1/2° E, 51 lks. (33.7 ft.) dist., mkd. 1/4 S32 BT.
- A larch, 9 ins. diam., bears S55° E, 57 lks. (37.6 ft.) dist., mkd. 1/4 S5 BT.

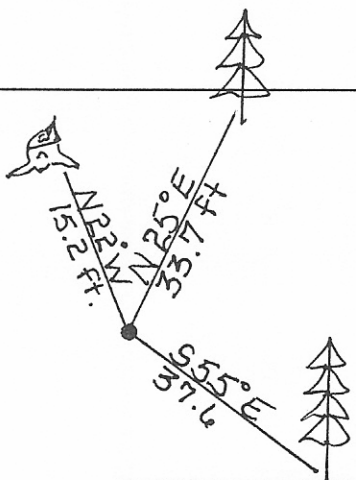
Raise a collar of stone, 3 ft. diam. around the iron post.

II. Found a 2 1/2 in. diam. iron pipe, 2 ins. above ground, firmly set, with B.L.M. brass cap mkd. as shown above, from which:

- A larch, 15 ins. diam., bears N25° E 33.7 ft. dist., healed face. (B.L.M.- record)
- A larch, 15 ins. diam., bears S55° E, 37.6 ft. dist., healed face. (B.L.M.- record)
- No evidence found of orig. G.L.O. BT at S46 1/2° W.
- A rotten fir stump, bears N22° W, 15.2 ft. dist., no visible marks. (G.L.O.- record)
- A 6 ft. steel guard post with LSM decal bears SOUTH, 1 ft. from corner.

III. Painted a red band around bearing trees and attached Land Survey Monument and Bearing Tree signs.

Magnetic Declination: 20° East.



SKETCH OF CORNER

CERTIFICATION

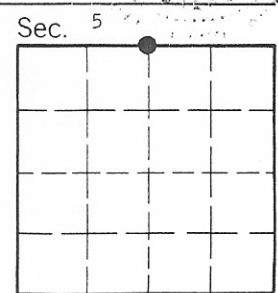
I. Thomas Hommel
certify the information shown herein is true and correct.
Signature Ground Party Chief

I. Alvah F. Hughes
certify that this Corner Record correctly represents work performed by me or under my direction in compliance with the "Corner Recordation Act" (70-22-101, et seq., M.C.A.)
Signature of Surveyor & Seal

Date: 12/05/94 Reg. No. 7322

Employer: U.S. FOREST SERVICE

Office of Clerk and Recorder, County of Lincoln. This "corner record" was filed for record on May 3, 1995 was noted on the cross-index plat and is assigned page No. 7302, in book No. _____
Carol M. Cummins, P.E.
County Official



Cross Index No. A-7 T. 31N R. 33W P.M.M.

• - corner this sheet