

CERTIFIED LAND CORNER RECORDATION

SEC. 28 TWP. 31 N., R. 33 W., M.P.M.

DESCRIPTION OF CORNER EVIDENCE FOUND, AND ORIGINAL RECORD (IF KNOWN)

- 1. Brass cap and 2 bearing trees by others.
2. Not previously set.
3. Brass cap and bearing trees by B.L.M.
4. Not previously set.
5. Steel pin set by others.

NOTE: Numbers refer to sketch on back.

DESCRIPTION OF MONUMENT AND ACCESSORIES ESTABLISHED TO PERPETUATE THE ORIGINAL LOCATION OF THIS CORNER:

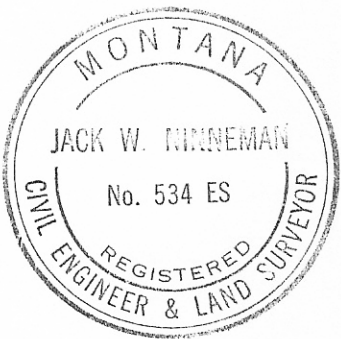
Date of work: Jan. 4, 1972

- 1. Brass cap and 2 bearing trees by others.
2. Set a brass cap from which a 10" pine bears N 82° W 9.3 Ft. and a 10" pine bears S 28° E 22.1 Ft. Both trees are scribed S 1/16 B.T. and posted.
3. Brass cap and bearing trees by B.L.M.
4. Set a brass cap, no trees available.
5. Steel pin set by others.

SKETCH, WITH COURSE AND DISTANCE TO ADJACENT CORNERS IF DETERMINED IN THIS SURVEY. (MAY SKETCH OR PASTE REPRODUCTION ON REVERSE SIDE.)

SEE REVERSE

Surveyor's Seal



I, Jack H. Ninneman certify that the information shown herein is true and correct.

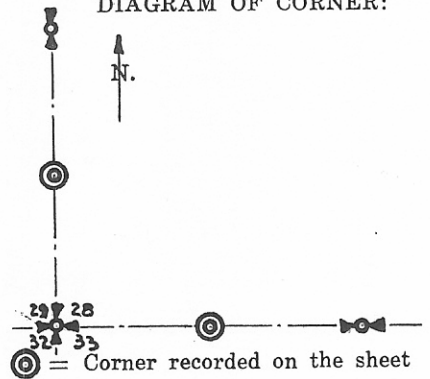
Signature of Ground Party Chief

I, Jack W. Ninneman certify that I have carefully performed or reviewed the work done on the diagrammed corner as reported on this recordation form and approve the same.

Signature of Surveyor

Mont. 534 ES Registration Number

DIAGRAM OF CORNER:



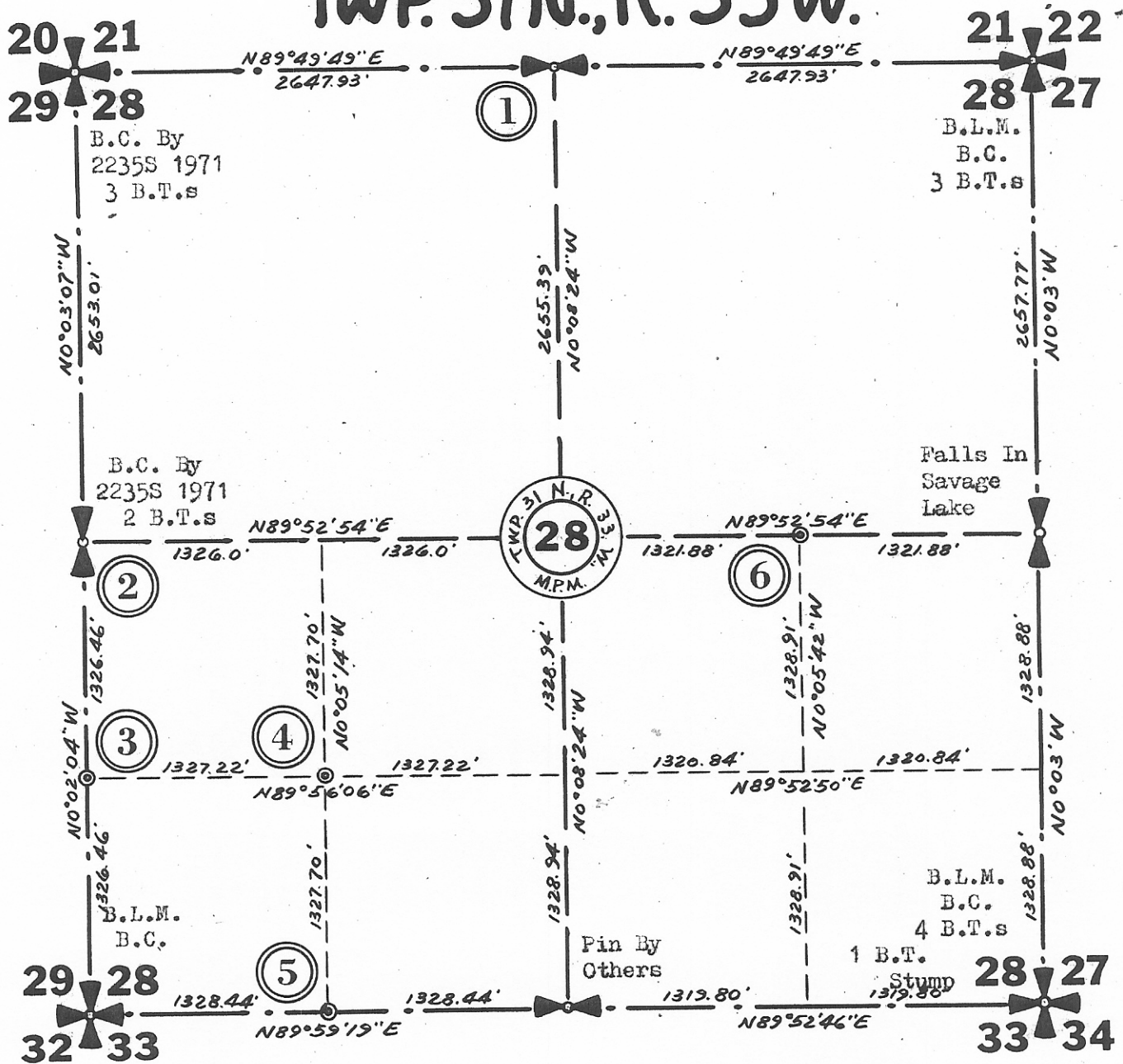
= Corner recorded on the sheet

Office of Clerk and Recorder, County of Lincoln
This "corner record" was filed for record on the 14th day of January 1972, was noted on the cross-index plat and is assigned page No. 261, in book No. 1

County Official: Clarence J. Vaughan, Deputy; Betty Stonebraker, Deputy

Cross Index No. 49 T. 31 R. 33 Mer. V10

TWP. 31 N., R. 33 W.



- | | |
|--|--|
| <p>(1) Set $\frac{1}{2}$" x 24" Steel Rod with
Cap Stamped: J.N. 534 E.S.</p> <p>(2) B.C. By 2235S. in 1971</p> <p>(3) Brass Cap By:
J.N. 534 E.S. in 1972</p> <p>(4) Brass Cap By:
J.N. 534 E.S. in 1972</p> <p>(5) Set $\frac{1}{2}$" x 24" Steel Rod with
Cap Stamped: J.N. 534 E.S.</p> <p>(6) Pin By Others</p> | <p>No B.T.s</p> <p>2 B.T.s
Set Location Poster S80°W 14.1 Ft. on 24" Cedar.</p> <p>10" Pine bears N82°W 9.3 Ft.
10" Pine bears S28°E 22.1 Ft.
Both Trees Scribed S 1/16 BT & Posted.</p> <p>No B.T.s Available</p> <p>14" Fir bears S6°E 5.3 Ft. Scribed SW 1/16 S28 BT & Posted.
Location Poster on Corner Fence Post N15°E 3.1 Ft.</p> <p>Set Location Poster on Power Pole S30°E 48.4 Ft.
Centerline Montana State Highway No. 202 West 22.5 Ft.±</p> |
|--|--|