

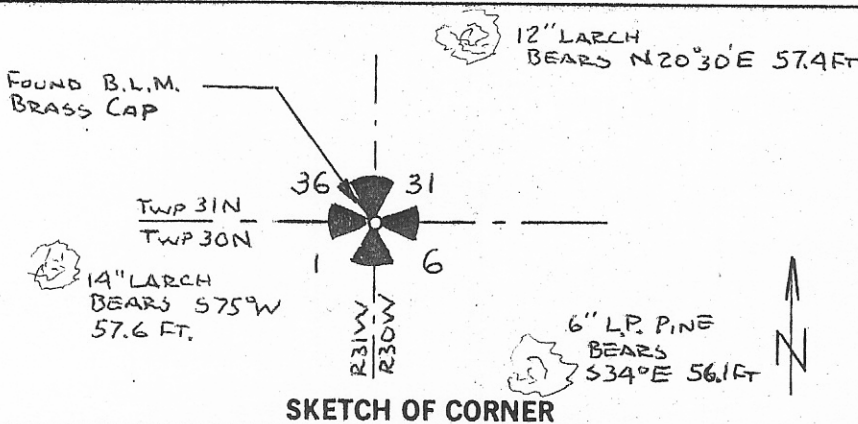
INSTRUCTIONS

1. Original and/or subsequent record used to evaluate the corner position.
2. Description of evidence found, note discrepancies in the record, state method of establishing lost or obliterated corners.
3. Description of monument and accessories set to perpetuate the corner position.
4. Sketch or corner, show all pertinent data which can best be shown in a sketch example, corner marking, topography ties, position of accessories, etc.
5. Certification must be signed and sealed by Registered Land Surveyor in State of Montana.
6. Fill in Cross Index & Section Diagram at bottom of sheet.

CERTIFIED CORNER RECORDATION

Corner South East Corner Sec. 36 T. 31N R. 34W P.M.M. Lincoln County

1. Record: Not known.
2. Found: B.L.M. brass cap from which a 14" Larch bears S 75° W 57.6 ft. posted scribe overgrown. Did not expose.
 A 6" L.P. Pine bears S 34° E 56.1 ft. posted scribe overgrown. Did not expose.
 A 12" Larch bears N 20°30' E 57.4 ft. posted scribe overgrown did not expose.

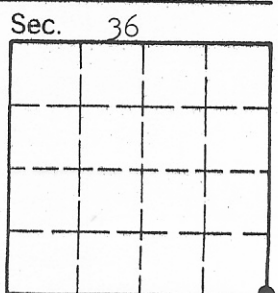


SKETCH OF CORNER

CERTIFICATION
 I, Jeff Paullin
 certify the information shown herein is true and correct.
Jeff Paullin
 Signature Ground Party Chief
 I, Jack H. Ninneman
 certify that this Corner Record correctly represents work performed by me or under by direction in compliance with the "Corner Recordation Act" (70-22-101, et seq., M.D.A.)
Jack H. Ninneman
 Signature of Surveyor & Seal
 Date: 7/10/81 Reg. No. 4661S
 Employer: Ninneman Engineering Inc.

Office of Clerk and Recorder, County of Lincoln. This "corner record" was filed for record on the 14th of July day of 1981 was noted on the cross-index plat and is assigned page No. 1085, in book No. 1

Cleanor L. Vaughn, by Betty Bell,
 County Official Deputy
 Cross Index No. (A-25; T30R34) 2-25
(Z-1, T31R33) Sec. 36 T. 31N R. 34W P.M.M.



• - corner this sheet