

INSTRUCTIONS

1. Original and/or subsequent record used to evaluate the corner position.
2. Description of evidence found, note discrepancies in the record, state method of establishing lost or obliterated corners.
3. Description of monument and accessories set to perpetuate the corner position.
4. Sketch of corner, show all pertinent data which can best be shown in a sketch example, corner marking, topography ties, position of accessories, etc.
5. Certification must be signed and sealed by Land Surveyor registered in the State of Montana.
6. Fill in Cross Index & Section Diagram at bottom of sheet.

CERTIFIED CORNER RECORDATION

Corner Sections 21, 22, 27 & 28 T. 32N R. 6E P.M.M. Liberty County

ORIGINAL RECORD: (1897 G.L.O.) Set a granite stone 16x12x9 ins., 10 ins. in the ground for cor. of 21, 22, 27, and 28, marked with 2 notches on S. and 3 notches on the E. edges; dig pits, 18x18x12 ins. in each sec. 5 1/2 ft. dist; and raise a mound of earth, 4 ft. base, 2 ft. high, W. of cor.

SUBSEQUENT RECORD: None

SUBSEQUENT RECORD: None found.

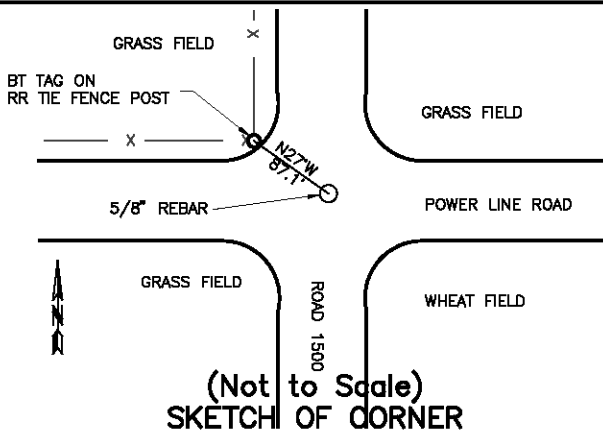
EVIDENCE FOUND: Found a 5/8" rebar, 1.0' under the surface of a 4-way road intersection. The monument measures 2637.39' to the one-quarter corner to the west, which is a 3 1/2" Aluminum cap; this measurement can be found on the corner recordation for the east one-quarter corner for section 28 filed in 1988 by John Cicon, the record measurement from John's corner record is 2637.16'.

PERPETUATION: Left the 5/8" rebar as found and placed a BT tag on a RR Tie fence post which bears N27°W, 87.1' distant.

Date of Survey: February, 2007.

Compass Declination Used: 16°E

NAD 83 coordinates for this corner:
 Latitude = 48°30'33.428"N Longitude = 110°57'04.180"W
 NOTE: These coordinates are to be used as a search tool only.



CERTIFICATION

I, John Shirey
 certify the information shown herein is true and correct.

 Signature Ground Party Chief

I, Kurt A. Luebke
 certify that this Corner Record correctly represents work performed by me or under my direction in compliance with the "Corner Recordation Act" (70-22-101, et seq., M.C.A.)

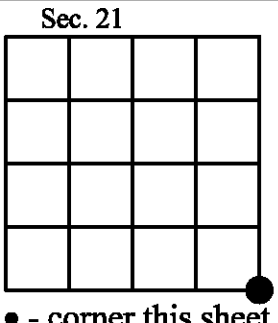
 Signature of Surveyor & Seal

Date: _____ Reg. No. 13237 S

Employer: DJ&A P. C.

Office of Clerk and Recorder, County of Liberty. This "corner record" was filed for record on _____ was noted on the cross index plat and is assigned page No. _____, in book No. _____

 County Official



Cross Index No. R-13 T. 32N R. 6E PMM