

INSTRUCTIONS

1. Original and/or subsequent record used to evaluate the corner position.
2. Description of evidence found, note discrepancies in the record, state method of establishing lost or obliterated corners.
3. Description of monument and accessories set to perpetuate the corner position.
4. Sketch of corner, show all pertinent data which can best be shown in a sketch example, corner marking, topography ties, position of accessories, etc.
5. Certification must be signed and sealed by Land Surveyor registered in the State of Montana.
6. Fill in Cross Index & Section Diagram at bottom of sheet.

**CERTIFIED CORNER RECORDATION**

Corner 1/4 Sections 12 & 13 T. 32N R. 15E P.M.M. Hill County

**ORIGINAL RECORD:** (1894 G.L.O.) Set a sandstone 16x10x8 ins., 11 ins. in the ground for 1/4 sec. cor., marked 1/4 on N. face, dug pits 18x18x12 ins. N. & S. of stone 5 1/2 ft. dist. and raised a mound of earth 1 1/2 ft. high 3 1/2 ft. base alongside.

**SUBSEQUENT RECORD:** (1991 C.R. 496974 by Ronald Turner) Found a 5/8" rebar with yellow plastic cap stamped C.S.S. & A. in west edge of trail road. The monument falls 30' west and in line with a fence to the east and is 156.03' south of a 5/8" rebar.

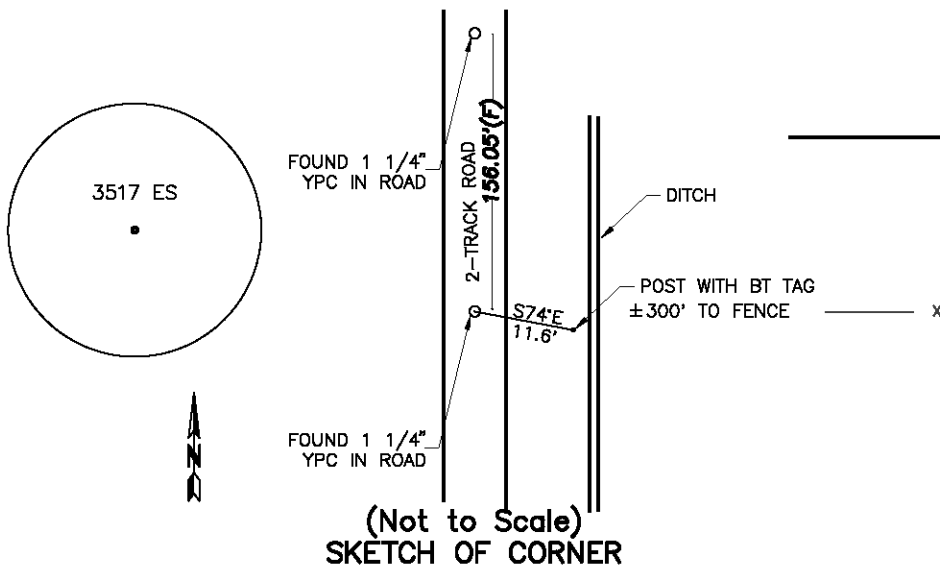
**EVIDENCE FOUND:** Found a 1 1/4" YPC marked "3517 ES" in the west track of a 2-track road. The monument falls 14' east of a ditch and directly in line with the fence running off to the east and is 156.05' south of a 1 1/4" YPC marked "3517 ES".

**PERPETUATION:** Left the YPC as found at the surface of the 2-track road. Placed a BT tag on a fence post which bears S74°E, 11.6' distant.

Date of Survey: February, 2007.

Compass Declination Used: 16°E

NAD 83 coordinates for this corner:  
 Latitude = 48°32'21.580"N Longitude = 109°43'29.004"W  
 NOTE: These coordinates are to be used as a search tool only.



**CERTIFICATION**

I, Steve Cummings  
 certify the information shown herein is true and correct.

\_\_\_\_\_  
 Signature Ground Party Chief

I, Kurt A. Luebke  
 certify that this Corner Record correctly represents work performed by me or under my direction in compliance with the "Corner Recordation Act" (70-22-101, et seq., M.C.A.)

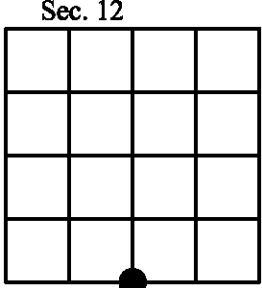
\_\_\_\_\_  
 Signature of Surveyor & Seal

Date: \_\_\_\_\_ Reg. No. 13237 S

Employer: DJ&A P. C.

Office of Clerk and Recorder, County of Hill. This "corner record" was filed for record on \_\_\_\_\_ was noted on the cross index plat and is assigned page No. \_\_\_\_\_, in book No. \_\_\_\_\_

\_\_\_\_\_  
 County Official



Cross Index No. J-23 T. 32N R. 15E PMM