

INSTRUCTIONS

1. Original and/or subsequent record used to evaluate the corner position.
2. Description of evidence found, note discrepancies in the record, state method of establishing lost or obliterated corners.
3. Description of monument and accessories set to perpetuate the corner position.
4. Sketch of corner, show all pertinent data which can best be shown in a sketch example, corner marking, topography ties, position of accessories, etc.
5. Certification must be signed and sealed by Land Surveyor registered in the State of Montana.
6. Fill in Cross Index & Section Diagram at bottom of sheet.

CERTIFIED CORNER RECORDATION

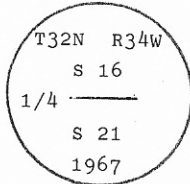
Corner N 1/4 Cor. Sec. 21 T. 32 N. R. 34 W. P.M.M. Lincoln County

I. 1903 GLO original record by A. B. BENEDICT: Set a limestone and two bearing trees.

1966 BLM Remonumentation Record by W. E. DAMM et. al.: The 1/4 sec. cor. of secs. 16 and 21, monumented with a limestone, 21x9x4 ins., firmly set, mkd. 1/4 on the N. face, and witnessed by the remains of the original SE. bearing tree.

At the corner point

Set an iron post, 30 ins. long, 2 1/2 ins. diam., 24 ins. in the ground, with brass cap mkd.



from which

The original bearing tree:

A fir stump, 14 ins. diam., bears S 52° E, 20 lks. dist., mkd. 1/4 21 BT. (Record)

The new bearing trees:

A larch, 8 ins. diam., bears N 52 1/2° E, 38 lks. dist., mkd. 1/4 S16 BT.

A pine, 7 ins. diam., bears S 42 1/2° W, 14 lks. dist., mkd. 1/4 S21 BT.

II. Found a 2 1/2 in. diam. iron pipe, 4 ins. above ground, firmly set, with a 3 1/4 in. diam. BLM brass cap, mkd. as shown above.

from which:

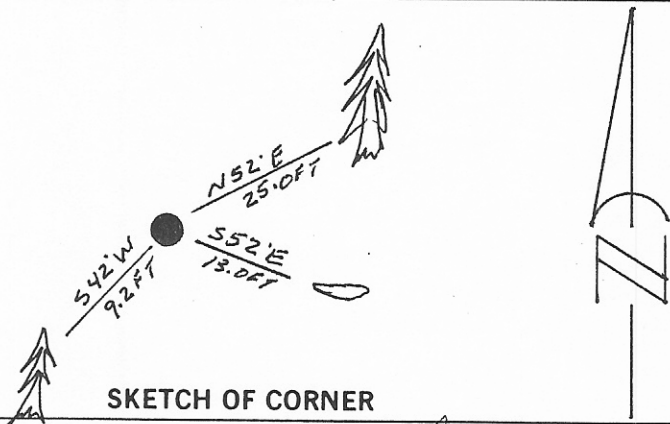
Rotten remains of a fir, bears S 52° E, 13.0 ft. dist.

A larch, 12 ins. diam., bears N 52° E, 25.0 ft. dist., mkd. with a healed face.

A pine, 13 ins. diam., bears S 42° W, 9.2 ft. dist., mkd. with a healed face.

III. Painted red bands around the bearing trees and attached Land Survey Monument and Bearing Tree signs.

Magnetic declination: 20° East



CERTIFICATION

I, Thomas M. Hommel
certify the information shown herein is true and correct.

Thomas M. Hommel
Signature Ground Party Chief

I, Alvah F. Hughes
certify that this Corner Record correctly represents work performed by me or under my direction in compliance with the "Corner Recordation Act" (70-22-101, et seq., M.C.A.)

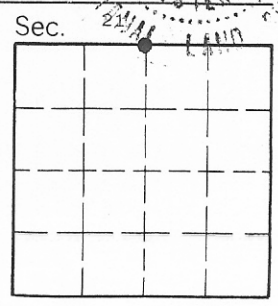
Alvah F. Hughes
Signature of Surveyor & Seal

Date: 12/14/94 Reg. No. 7322LS

Employer: U.S. FOREST SERVICE

Office of Clerk and Recorder, County of Lincoln. This "corner record" was filed for record on May 25, 1995 was noted on the cross-index plat and is assigned page No. 7519, in book No. _____

Coral M. Cummings, R.P.B.
County Official



Cross Index No. N-11 T. 32N R. 34W P.M.M.

• - corner this sheet