

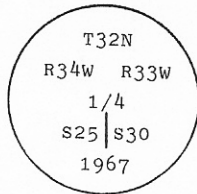
INSTRUCTIONS

1. Original and/or subsequent record used to evaluate the corner position.
2. Description of evidence found, note discrepancies in the record, state method of establishing lost or obliterated corners.
3. Description of monument and accessories set to perpetuate the corner position.
4. Sketch of corner, show all pertinent data which can best be shown in a sketch example, corner marking, topography ties, position of accessories, etc.
5. Certification must be signed and sealed by Land Surveyor registered in the State of Montana.
6. Fill in Cross Index & Section Diagram at bottom of sheet.

CERTIFIED CORNER RECORDATION

Corner 1 of HES 415 & 1051, 1/4 of S25 & S30 T. 32 N., R. 33 W., P.M.M. Lincoln County

- I. 1903 original GLO record by A. Benedict: "Set a limestone, 14x10x6 ins., 10 ins. in the ground, for 1/4 sec cor."...scribed two bearing trees as accessories.
- 1915, HES 415, U.S. Forest Service record by E. Johnson: "Cor. No. 1...identical with 1/4 Cor. of Secs. 25 and 30, marked and witnessed as described by the Surveyor General"...marked a cross (x) on the 1/4 cor. for the exact corner point."...scribed two bearing trees and raise a mound of earth as accessories.
- 1921, HES 1051, U.S. Forest Service record by G. Higgins: "The 1/4 sec. cor. of sec. 25. T32N R34W amd Sec. 30 T32N R33W...witnessed as described by the Surveyor General, identical in point for Cor. No. 1 of HES No. 415 (accepted)...I adopt this Cor. for Cor. No. 1, of this survey."...scribed two bearing trees.
- 1967, B.L.M. remonumentation by W. Damm et al: "The 1/4 sec. cor. of secs. 25 and 30, on the E. bdy. of Tp. identical with Cor. No. 1 of H.E.S. 415 and Cor. No. 1 of H.E.S. 1051, monumented with a limestone, 14x10x6 ins., firmly set, mkd. 1/4 on the W. face, and witnessed by the remains of the original bearing trees. At the corner point; set an iron post, 30 ins. long, 2 1/2 ins. diam., 24 ins. in the ground, with brass cap mkd:



Bury the original stone alongside the iron post."...scribed one new bearing tree.

1985 Certified Corner Recordation by T. Hill: erroneous information of accessories.

II. Found, an iron post 2 1/2 ins. diam., firmly set, projecting 8 ins. above ground, with brass cap marked as shown above, from which:

Bearing trees recorded in 1903 original GLO record:

- A rotten stump, bears N89 1/2° E (rcd: S88 1/2° E), 18 lks. dist., no visible scribing
- A pine snag, bears N75° W (rcd: N76 3/4° W), 48 lks. dist., scribed 2 BT.

Bearing trees recorded in 1915, HES 415, USFS record:

- A larch, 15 ins. diam., bears S25° E (rcd: S27 1/4° E), 49 lks. dist., scribed 1 HES 415 BT
- A larch, 19 ins. diam., bears S54° W (rcd: S51 1/4° W), 53 lks. dist., with healed face

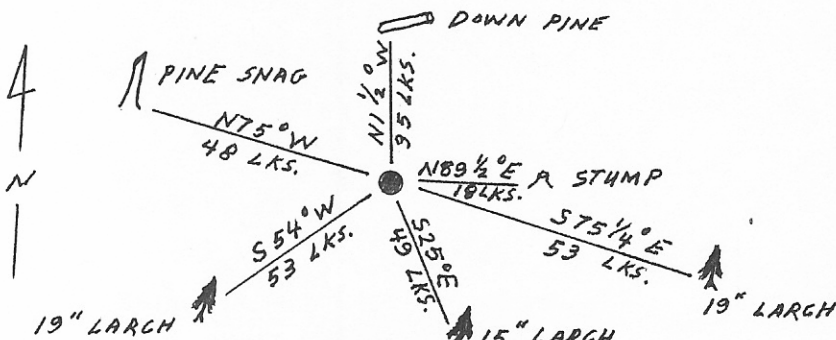
Bearing trees recorded in 1921, HES 1051, USFS record:

- A down pine, 12 ins. diam., bears N1 1/2° W, 35 lks. (rcd: 65 lks.) dist., mkd. 1 HES 1051 BT

Bearing trees recorded in 1967, BLM record:

- A larch, 19 ins. diam., bears S75 1/4° E, 53 lks. dist., with healed face (record).

Set a 6 ft. guard post, 3 lks., E. of the corner.



SKETCH OF CORNER

CERTIFICATION

I, Ronald A. Pearson certify the information shown is true and correct.

Thomas C. Hill
Signature of Ground Party Chief

I, Thomas C. Hill certify that this Corner Record correctly represents work performed by me or under my direction in compliance with the "Corner Recordation Act" (70-22-101, et seq., M.C.A.)

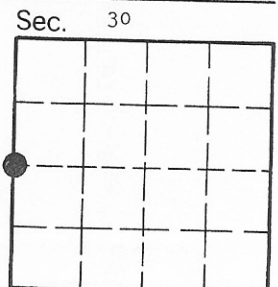
Thomas C. Hill
Signature of Surveyor & Seal

Date: 12-4-88 Reg. No. 5512 S

Employer: U.S. FOREST SERVICE

Office of Clerk and Recorder, County of Lincoln. This "corner record" was filed for record on Dec 13, 1988 was noted on the cross-index plat and is assigned page No. 3952, in book No. _____

Janet B. Segal by Bill Buckley
County Official



Cross Index No. T-1 T. 32 N. R. 33 W. P.M.M.

• - corner this sheet