

CERTIFIED LAND CORNER RECORDATION

DESCRIPTION OF CORNER EVIDENCE FOUND, AND ORIGINAL RECORD (IF KNOWN)

Evidence Found: At the Section corner common to Sections 1,6,7 and 12, we found North - South gravel road, (6th Ave. NE), fence line running East. At intersection of the road and fence we found 5/8" rebar with destroyed yellow plastic cap burried 6" in center of road. T.33N., Sec.1 & 12, R.6W., Sec. 6 & 7, R.5W.

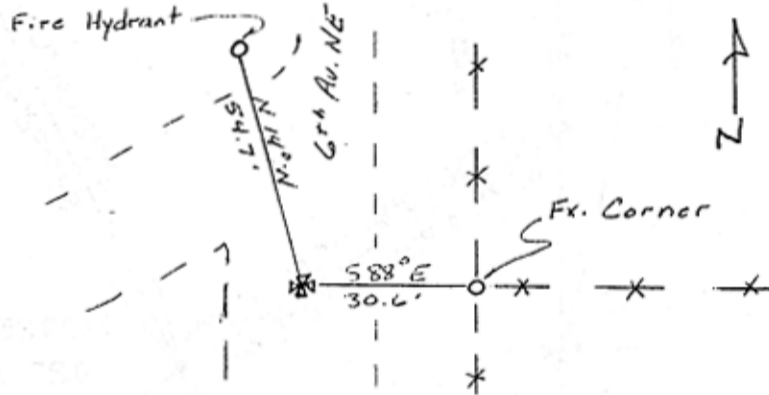
DESCRIPTION OF MONUMENT AND ACCESSORIES ESTABLISHED TO PERPETUATE THE ORIGINAL LOCATION OF THIS CORNER:

Date of work: 7-16-91

Set: We set a new yellow plastic cap stamped "Triangle Eng. RLS 8238," on rebar.

From the corner; Center top of fire hydrant bears N14°W, 54.7 Feet Nail with spinner in West face of corner fence post bears S88°E, 30.6 Feet. We attached Survey monument signs to the fence post and fire hydrant.

SKETCH, WITH COURSE AND DISTANCE TO ADJACENT CORNERS IF DETERMINED IN THIS SURVEY. (MAY SKETCH OR PASTE REPRODUCTION ON REVERSE SIDE.)



Surveyor's Seal

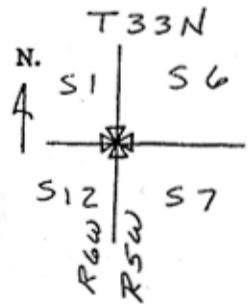
I, Guy Dubois
 certify that the information shown herein is true and correct.

Guy Dubois
 Signature of Ground Party Chief

I, Thomas L. Russell
 certify that I have carefully performed or reviewed the work done on the diagrammed corner as reported on this recordation form and approve the same.

Thomas L. Russell
 Signature of Surveyor

DIAGRAM OF CORNER:



= Corner recorded on the sheet

82385
 Registration Number

Office of Clerk and Recorder, County of Glacier

This "corner record" was filed for record on the 24 day of October 1991, was noted on the cross-index plat and assigned page No. 497, in book No. 48 Misc

Loretta Barron
 County Official

3 N
K W R S W

This Certificate

S00°12'05"E 2652.44' (M)

S00°09'00"E 7.24' (REC)
S01°28'58"E 7.27' (M)

S57°53'00"E 215.45' (REC)
S58°00'12"E 215.25' (M)

32322.2442
0.74 Ac.

BASIS OF BEARING
N00°09'00"W 2638.30'
N00°09'00"W 231.30' (REC)
N00°08'30"W 231.01' (M)

RANGE 6 WEST

RANGE 5 WEST

12 7
13 18

N57°56'00"W 115.00' (REC)
S57°54'23"E 115.07' (M)

S25°20'40"W 197.15' (REC)
S25°22'47"W 197.12' (M)

9829.258 FT²
0.23 Ac.

S00°09'00"W 231.08' (REC)
S00°08'34"W 231.46' (M)
N57°56'00"W 100.35' (REC)
N57°53'48"W 100.42' (M)

227255

STATE OF MONTANA } ss
 County of Glacier }
 Filed for Record this 24 day of
October A.D. 19 91
 at 4:25 o'clock M
 and recorded in Book 48 of
 on Page 497
 Clara Henderson
 County Recorder
 By LK Barron Deputy
 Return to
 Fee \$