

INSTRUCTIONS

1. Original and/or subsequent record used to evaluate the corner position.
2. Description of evidence found, note discrepancies in the record, state method of establishing lost or obliterated corners.
3. Description of monument and accessories set to perpetuate the corner position.
4. Sketch of corner, show all pertinent data which can best be shown in a sketch example, corner marking, topography ties, position of accessories, etc.
5. Certification must be signed and sealed by Land Surveyor registered in the State of Montana.
6. Fill in Cross Index & Section Diagram at bottom of sheet.

CERTIFIED CORNER RECORDATION

Corner Sections 5, 6, 31 & 32 T. 33 & 34N R. 5W P.M.M. Glacier County

ORIGINAL RECORD: (1900 G.L.O.) Set a sandstone 16x14x4 ins., 11 ins. in the ground for cor. of secs. 5, 6, 31 & 32, marked with 1 notch on W. and 5 notches on E. edges, dig pits 18x18x12 ins. in each sec. 5 1/2 ft. dist., and raise a mound of earth 4 ft. base, 2 ft. high W. of cor.

SUBSEQUENT RECORD: (1937 G.L.O.) The accepted point for cor. of secs. 5, 6, 31, and 32, on N. bdy. of Tp., by adjoining property owners is at the center of intersecting lanes bearing north and south, and east and west. No other evidence of the original corner location exists and no trace of the cor. stone was found. Therefore, Set an iron post, 3 ft. long, 2 ins. diam., 36 ins. in the ground for cor. of secs. 5, 6, 31, and 32, with brass cap marked: T33N T34N R5W S31 S32 S5 S6 1936, from which:
 A fence-cor. post unmarked, bears N45°40'E, 68 lks. dist.
 A fence-cor. post unmarked, bears S45°30'E, 67 lks. dist.
 A fence-cor. post unmarked, bears S49°50'W, 53 lks. dist.
 A fence-cor. post unmarked, bears N50°20'W, 74 lks. dist.

SUBSEQUENT RECORD: None found.

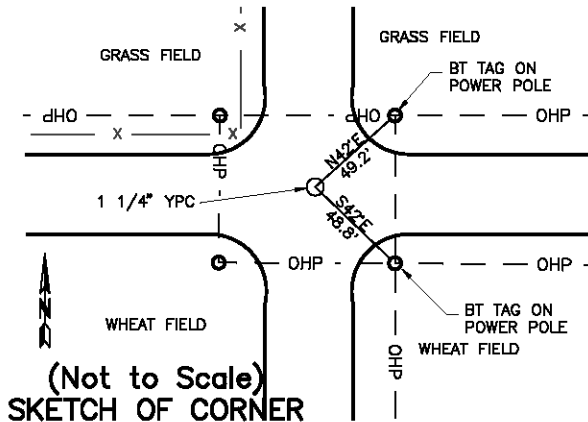
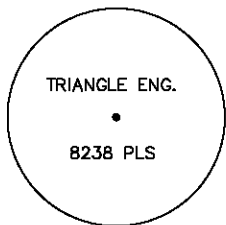
EVIDENCE FOUND: Found a 1 1/4" yellow plastic cap, marked as shown in the sketch below, 1.0' below the centerline of the four-way road intersection.

PERPETUATION: Left the yellow plastic cap as found. Placed a BT tag on a power pole which bears N42°E, 49.2' distant.
 Placed a BT tag on a power pole which bears S42°E, 48.8' distant.

Date of Survey: February, 2007.

Compass Declination Used: 16°E

NAD 83 coordinates for this corner:
 Latitude = 48°39'12.229"N Longitude = 112°17'54.080"W
 NOTE: These coordinates are to be used as a search tool only.



CERTIFICATION

I, John Shirey
 certify the information shown herein is true and correct.

 Signature Ground Party Chief

I, Kurt A. Luebke
 certify that this Corner Record correctly represents work performed by me or under my direction in compliance with the "Corner Recordation Act" (70-22-101, et seq., M.C.A.)

 Signature of Surveyor & Seal

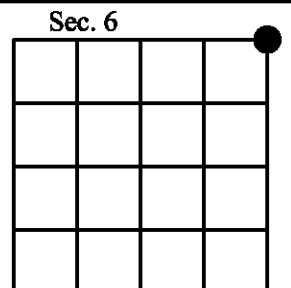
Date: _____ Reg. No. 13237 S

Employer: DJ&A P. C.

Office of Clerk and Recorder, County of Glacier. This "corner record" was filed for record on _____ was noted on the cross index plat and is assigned page No. _____, in book No. _____

 County Official

Cross Index No. A-5 T. 33N R. 5W PMM
 Cross Index No. Z-5 T. 34N R. 5W PMM



● - corner this sheet