

INSTRUCTIONS

1. Original and/or subsequent record used to evaluate the corner position.
2. Description of evidence found, note discrepancies in the record, state method of establishing lost or obliterated corners.
3. Description of monument and accessories set to perpetuate the corner position.
4. Sketch of corner, show all pertinent data which can best be shown in a sketch example, corner marking, topography ties, position of accessories, etc.
5. Certification must be signed and sealed by Land Surveyor registered in the State of Montana.
6. Fill in Cross Index & Section Diagram at bottom of sheet.

CERTIFIED CORNER RECORDATION

Corner 1/4 Sections 27 & 28 T. 33N R. 5W P.M.M. Glacier County

**ORIGINAL RECORD:** (1900 G.L.O.) Set a sandstone 14x12x10 ins., 9 ins. in the ground for 1/4 sec. cor., marked 1/4 on W. face; dig pits 18x18x12 ins. N. & S. of stone 3 ft. dist. and raise a mound of earth 3 1/2 ft. base 1 1/2 ft. base W. of cor.

**SUBSEQUENT RECORD:** (1936 G.L.O.) The proportioned point for 1/4 sec. cor., at center of county graded highway to Valier, Mont., bearing North and East. Having not iron posts on hand, set a wooden hub, 2 ins. sq., 1 ft. long, 12 ins. in and flush with the ground, for 1/4 sec. cor. point; from which:  
 A squared fence cor. post, 8 ins. sq., 7 ft. high, bears N53°E, 73 lks. dist.  
 A U.S. Geological Survey monument, an iron post, 3 ins. diam., 10 ins. above ground, marked on brass cap MM 35, bears N22°30'W, 1.21 chs. dist.

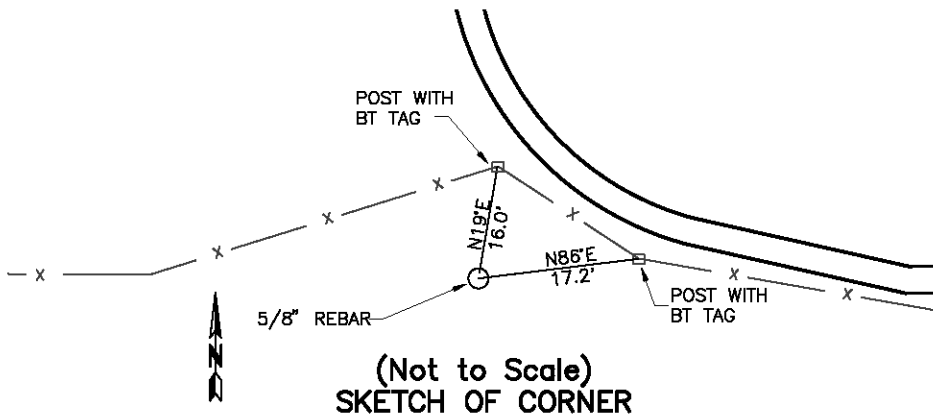
**EVIDENCE FOUND:** Found a 5/8" rebar with no cap, 0.6' below the ground surface. The monument falls in the near some wheat fields, and is at the extended intersection of a gravel road running north and east., no sign of the GLO bearing objects.

**PERPETUATION:** Left the rebar as found and placed BT tags on RR tie gate posts which bear N19°E, 16.0' distant and N86°E, 17.2' dist.

Date of Survey: February, 2007.

Compass Declination Used: 16°E

NAD 83 coordinates for this corner:  
 Latitude = 48°35'17.612"N Longitude = 112°15'17.023"W  
 NOTE: These coordinates are to be used as a search tool only.



CERTIFICATION

I, John Shirey  
 certify the information shown herein is true and correct.

\_\_\_\_\_  
 Signature Ground Party Chief

I, Kurt A. Luebke  
 certify that this Corner Record correctly represents work performed by me or under my direction in compliance with the "Corner Recordation Act" (70-22-101, et seq., M.C.A.)

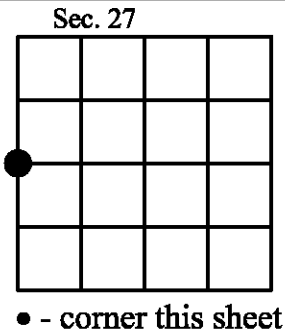
\_\_\_\_\_  
 Signature of Surveyor & Seal

Date: \_\_\_\_\_ Reg. No. 13237 S

Employer: DJ&A P. C.

Office of Clerk and Recorder, County of Glacier. This "corner record" was filed for record on \_\_\_\_\_ was noted on the cross index plat and is assigned page No. \_\_\_\_\_, in book No. \_\_\_\_\_

\_\_\_\_\_  
 County Official



Cross Index No. T-13 T. 33N R. 5W PMM