

**INSTRUCTIONS**

1. Original and/or subsequent record used to evaluate the corner position.
2. Description of evidence found, note discrepancies in the record, state method of establishing lost or obliterated corners.
3. Description of monument and accessories set to perpetuate the corner position.
4. Sketch or corner, show all pertinent data which can best be shown in a sketch example, corner marking, topography lies, position of accessories, etc.
5. Certification must be signed and sealed by Registered Land Surveyor in State of Montana.
6. Fill in Cross Index & Section Diagram at bottom of sheet.

**CERTIFIED CORNER RECORDATION**

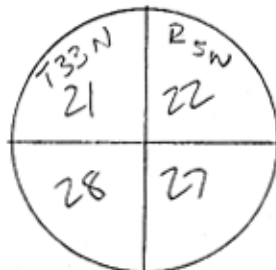
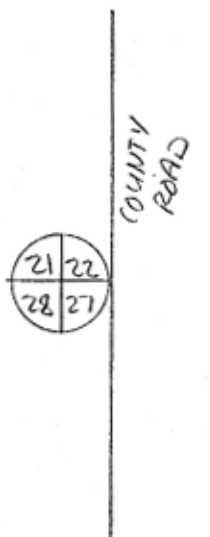
Corner 21, 22, 27, 28 T. 33N R. 5W P.M.M. GLACIER County

RECORD 1936. SET AN IRON POST, 3 FEET LONG, 2 INCHES DIAMETER, 36 INCHES IN THE GROUND, WITH BRASS CAP.

FOUND 1994 NO EVIDENCE OF PIPE OR CAP. GRAVEL ROAD HAD BEEN BUILT UP.

SET A 24 INCH 5/8 INCH  $\phi$  REBAR WITH ALUMINUM CAP MARKED T33N R5W SECTIONS 21, 22, 27, 28 WEST OF COUNTY, GRAVEL ROAD. NO OTHER ACCESSORIES.

N  
↑



T 33N, R 5W P.M.M.  
SKETCH OF CORNER

N  
↑

**CERTIFICATION**

I, \_\_\_\_\_  
certify the information shown herein is true and correct.

Signature Ground Party Chief  
Kenneth D. Brandt

I, Kenneth D. Brandt  
certify that this Corner Record correctly represents work performed by me or under my direction in compliance with the "Corner Recordation Act" (70-22-101, et seq., M.D.A.)

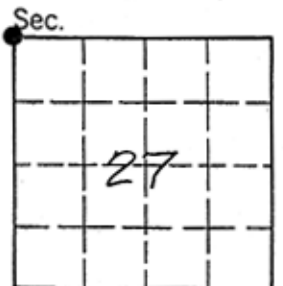
Kenneth D. Brandt  
Signature of Surveyor & Seal

Date: 11/3/95 Reg. No. 52835  
Employer: Thomas, Deen & Hoskins

Office of Clerk and Recorder, County of Glacier. This "corner record" was filed for record on the 6-13-95 day of 19\_\_, was noted on the cross-index plat and is assigned page No. \_\_\_\_\_, in book No. \_\_\_\_\_

[Signature]  
County Official

Cross Index No. R13 T. 33N R. 5W P.M.M.



• corner this sheet