

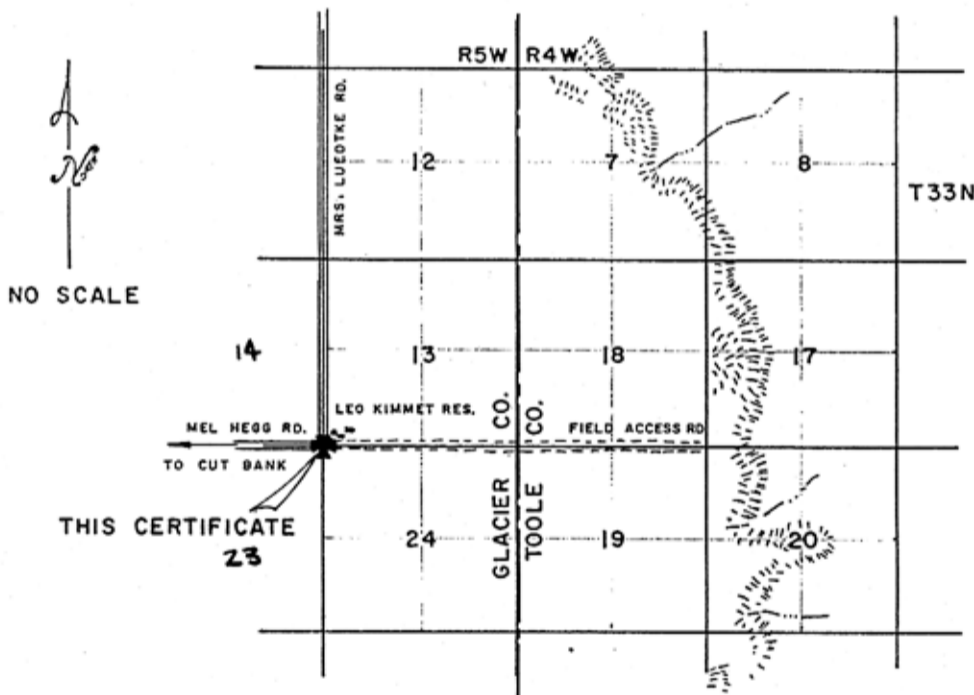
INSTRUCTIONS

- 1. Description of evidence found, note discrepancies in the record, state method of establishing lost or obliterated corners.
- 2. Description of monument and accessories set to perpetuate the corner position.
- 3. Sketch of corner, show all pertinent data which can best be shown in a sketch example, corner marking, topography ties, position of accessories, etc.
- 4. Certification must be signed and sealed by Land Surveyor registered in the State of Montana.
- 5. Fill in Cross Index & Section Diagram at bottom of sheet.

CERTIFIED CORNER RECORDATION

Corner Sections 13,14,23, & 24 T. 33N R. 5W P.M.M. Glacier County

Evidence found : At the Section corner common to Sec's. 13,14,23, & 24 we find a 5/8" rebar pin with orange cap set by Bob Babb, No.4523 E.S. Said pin is located at the intersection of county roads, Mel Hegg to the west and Mrs. Luedtke to the north approximately 2" below the surface at said intersection, just west of the Leo Kimmet Ranch.



THIS CERTIFICATE 23

CERTIFICATION

I, Kenneth E. Dunlap  
 certify the information shown herein is true and correct.  
 Signature: Kenneth E. Dunlap  
 Title: Ground Party Chief

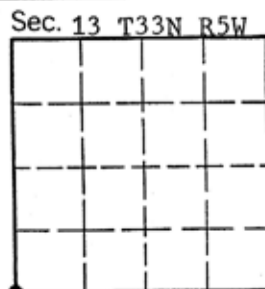
I, Thomas L. Russett  
 certify that this Corner Record correctly represents work performed by me or under my direction in compliance with the Corner Recordation Act (70-22-104, et seq., M.C.A.)  
 Signature of Surveyor & Seal: Thomas L. Russett  
 Date: 2/08/90 Reg. No. 8238 L.S.  
 Employer: Triangle Engineering

SKETCH OF CORNER

Office of Clerk and Recorder, County of \_\_\_\_\_ . This "corner record" was filed for record on \_\_\_\_\_ was noted on the cross-index plat and is assigned page No. \_\_\_\_\_ , in book No. \_\_\_\_\_

County Official

Cross Index No. N-21 T. 33 R. 5 P.M.M.



• - corner this sheet