

INSTRUCTIONS

1. Original and/or subsequent record used to evaluate the corner position.
2. Description of evidence found, note discrepancies in the record, state method of establishing lost or obliterated corners.
3. Description of monument and accessories set to perpetuate the corner position.
4. Sketch of corner, show all pertinent data which can best be shown in a sketch example, corner marking, topography ties, position of accessories, etc.
5. Certification must be signed and sealed by Land Surveyor registered in the State of Montana.
6. Fill in Cross Index & Section Diagram at bottom of sheet.

CERTIFIED CORNER RECORDATION

Corner 1/4 Sections 33 & 34 T. 33N R. 6W P.M.M. Glacier County

ORIGINAL RECORD: (1907 G.L.O.) Set a granite stone 14x8x6 ins., 10 ins. in the ground for 1/4 sec. cor., marked 1/4 on W. face. Dig pits 18x18x12 ins. N. & S. of cor. 3 ft. dist. and raise a mound of earth 3 1/2 ft. base 1 1/2 ft. base W. of cor.

SUBSEQUENT RECORD: (1922 G.L.O.) From the 1/4 sec. cor. bet. secs. 33 and 34, which is a granite stone 5x8x5 ins. above ground, marked and witnessed as described by the Surveyor General. South of the cor. and 1/2 lk. dist., set an I.D. iron post, 3 ft. long, 1 in. diam., 30 ins. in the ground, for cor. of allotments 854 and 3253 with brass cap marked 854-3253.

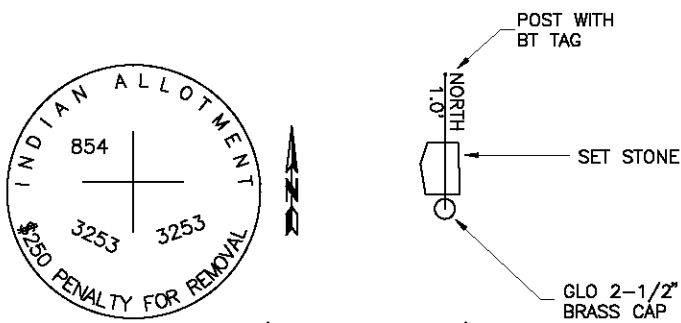
EVIDENCE FOUND: Found a 2 1/2" Brass Cap, marked as shown below 1.1' above ground and leaning to the north and a set stone on the north side of the monument with a mound of stone 2 1/2' north. The monument falls ±500' west of "South Road" and falls in the middle of an open field.

PERPETUATION: Left the Brass Cap and Stone as found and placed a BT tag on a fence post which bears North, 1.0' distant.

Date of Survey: February, 2007.

Compass Declination Used: 16°E

NAD 83 coordinates for this corner:
 Latitude = 48°34'25.282"N Longitude = 112°23'07.897"W
 NOTE: These coordinates are to be used as a search tool only.



(Not to Scale)
SKETCH OF CORNER

CERTIFICATION

I, Steve Cummings
 certify the information shown herein is true and correct.

 Signature Ground Party Chief

I, Kurt A. Luebke
 certify that this Corner Record correctly represents work performed by me or under my direction in compliance with the "Corner Recordation Act" (70-22-101, et seq., M.C.A.)

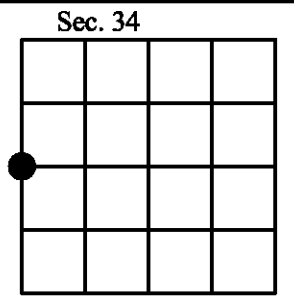
 Signature of Surveyor & Seal

Date: _____ Reg. No. 13237 S

Employer: DJ&A P. C.

Office of Clerk and Recorder, County of Glacier. This "corner record" was filed for record on _____ was noted on the cross index plat and is assigned page No. _____, in book No. _____

 County Official



Cross Index No. X-13 T. 33N R. 6W PMM