

INSTRUCTIONS

1. ORIGINAL AND/OR SUBSEQUENT RECORD USED TO EVALUATE THE CORNER POSITION
2. DESCRIPTION OF EVIDENCE FOUND, NOTE DISCREPANCIES IN THE RECORD, STATE METHOD OF ESTABLISHING LOST OR OBLITERATED CORNERS.
3. DESCRIPTION OF MONUMENT AND ACCESSORIES SET TO PERPETUATE THE CORNER POSITION
4. SKETCH OF CORNER, SHOW ALL PERTINENT DATA THE CORNER POSITION  
EXAMPLE, CORNER MARKINGS, TOPOGRAPY TIES, POSITION OF ACCESSORIES, ETC.
5. CERTIFICATION MUST BE SIGNED AND SEALED BY LAND SURVEYOR REGISTERED IN THE STATE OF MONTANA.
6. FILL IN CROSS INDEX. AND SECTION DIAGRAM AT BOTTOM OF SHEET.

CERTIFIED CORNER RECORDATION

CORNER: Northeast, SEC. 6, T. 35 N., R. 48 E., P.M.M., Daniels County, MT

ORIGINAL RECORD: Surveyed by Minott & Gleason in Sept. 1904.

76.22 chs. Set a sandstone, 14x10x3 ins., 9 ins. in the ground, for witness cor. to cor. of secs. 5, 6, 31 and 32, marked WC on NE. face; with 1 notch on W. and 5 notches on E. edges; dig pits, 18x18x12 ins. NE., SE., SW., and NW. of cor. 5 1/2 ft. dist., and raise a mound of earth, 4 ft. base, 2 ft. high, W. of cor.

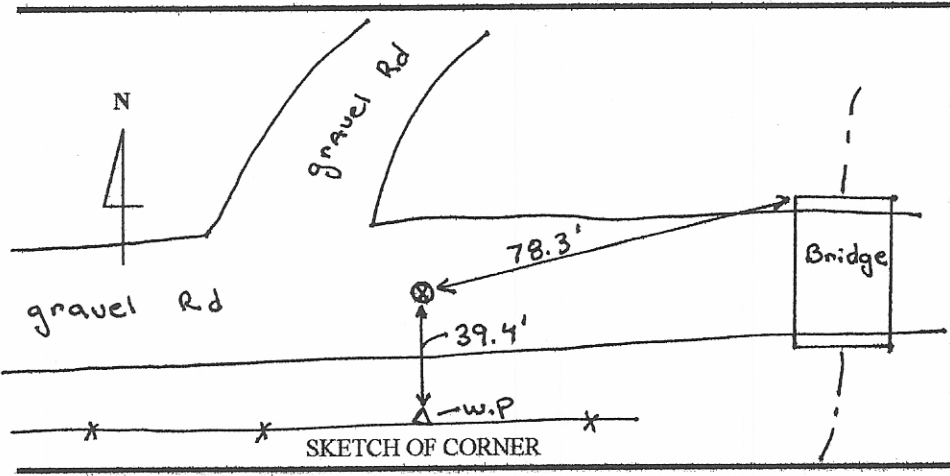
77.17 chs. True point for cor. of secs. falls in washout, course S., impracticable to establish cor.

SUBSEQUENT RECORD: None.

EVIDENCE FOUND: No evidence of original witness corner. Position of corner falls in a east-west county road.

SET: Reset corner using single proportion distance between the found north quarter corner of Section 6 and the northeast corner of Section 5 that was reset this survey. At the corner point set a std. 30" M.D.T. alum. monument sawed off at 15", hit large boulder at 20". Placed 3 RR spikes inside monument. Set cap 5" below the road surface. Placed a M.D.T. witness post to the south. Cap stamped

S 31	S 32
S 6	S 5
7155LS	
2000	



CERTIFICATION  
 I, Quinn W. Wright, PLS  
 certify the information shown is true and correct  
 Signature of Ground Party Chief  
 I, Jimmie L. Brewer, PLS  
 certify that this Corner Record correctly represents work performed by me or under my direction in compliance with the "Corner Recordation Act" (70-22-103, et seq., M.C.A.)  
 Signature of Surveyor & Seal  
 Date 2-14-2000 Reg. No. 7155LS  
 Employer: HKM Engineering Inc.

Office of Clerk and Recorder, County of Daniels. This "corner record" was filed for record on November 21, 2000 was noted on the cross-index plat and is assigned page No. \_\_\_\_\_ book No. \_\_\_\_\_  
Carol Malone  
 County Official

