

INSTRUCTIONS

1. ORIGINAL AND/OR SUBSEQUENT RECORD USED TO EVALUATE THE CORNER POSITION
2. DESCRIPTION OF EVIDENCE FOUND, NOTE DISCREPANCIES IN THE RECORD, STATE METHOD OF ESTABLISHING LOST OR OBLITERATED CORNERS.
3. DESCRIPTION OF MONUMENT AND ACCESSORIES SET TO PERPETUATE THE CORNER POSITION
4. SKETCH OF CORNER, SHOW ALL PERTINENT DATA THE CORNER POSITION  
EXAMPLE, CORNER MARKINGS, TOPOGRAPY TIES, POSITION OF ACCESSORIES, ETC.
5. CERTIFICATION MUST BE SIGNED AND SEALED BY LAND SURVEYOR REGISTERED IN THE STATE OF MONTANA.
6. FILL IN CROSS INDEX. AND SECTION DIAGRAM AT BOTTOM OF SHEET.

CERTIFIED CORNER RECORDATION

CORNER: Northeast, SEC. 5, T. 35 N., R. 48 E., P.M.M., Daniels County, MT

ORIGINAL RECORD: Surveyed by Minott & Gleason in Sept. 1904.

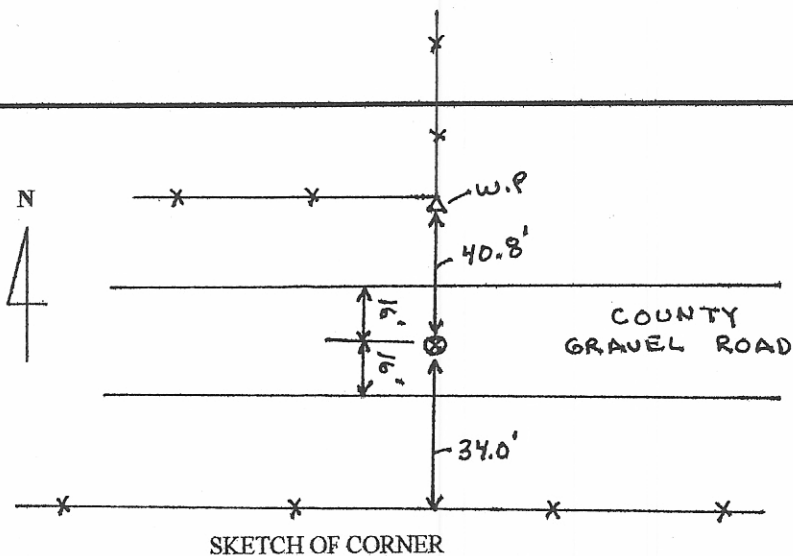
80.00 chs. Set a sandstone, 15x10x3 ins., 10 ins. in the ground, for cor. of secs. 4, 5, 32 and 33, marked with 2 notches on W. and 4 notches on E. edges; dig pits, 18x18x12 ins. in each sec. 5 1/2 ft. dist., and raise a mound of earth, 4 ft. base, 2 ft. high, W. of cor.

SUBSEQUENT RECORD: None.

EVIDENCE FOUND: No evidence of original corner. Position of corner falls in county road. A fence bearing north on north side of road.

SET: Reset the corner using the intersection of the east-west county road and a fenceline extending north. This position fits very well with the found north quarter corner of Section 6 to the west. At the corner point set a std. 30" M.D.T. monument 10" below the road surface with rebar inside. Set M.D.T. witness post to the north at a west-north fence corner. Cap stamped

S 32	S 33
S 5	S 4
7155LS	
2000	



CERTIFICATION

I, Quinn W. Wright, PLS  
certify the information shown is true and correct

*Quinn W. Wright*  
\* Signer of Ground Party Chief

I, Jimmie E. Brewer, PLS  
certify that this Corner Record correctly represents work performed by me or under my direction in compliance with the "Corner Recordation Act" of 70-22-101, et seq., M.C.A.)

*Jimmie E. Brewer*  
Signature of Surveyor & Seal

Date 9-14-2000 Reg. No. 7155LS  
Employer: HKM Engineering Inc.

Office of Clerk and Recorder, County of Daniels. This "corner record" was filed for record on November 21, 2000 was noted on the cross-index plat and is assigned page No. \_\_\_\_\_ book No. \_\_\_\_\_

*Carol Malone*  
County Official

Sec. 5

