

INSTRUCTIONS

1. Original and/or subsequent record used to evaluate the corner position.
2. Description of evidence found, note discrepancies in the record, state method of establishing lost or obliterated corners.
3. Description of monument and accessories set to perpetuate the corner position.
4. Sketch or corner, show all pertinent data which can best be shown in a sketch example, corner marking, topography ties, position of accessories, etc.
5. Certification must be signed and sealed by Registered Land Surveyor in State of Montana.
6. Fill in Cross Index & Section Diagram at bottom of sheet.

CERTIFIED CORNER RECORDATION

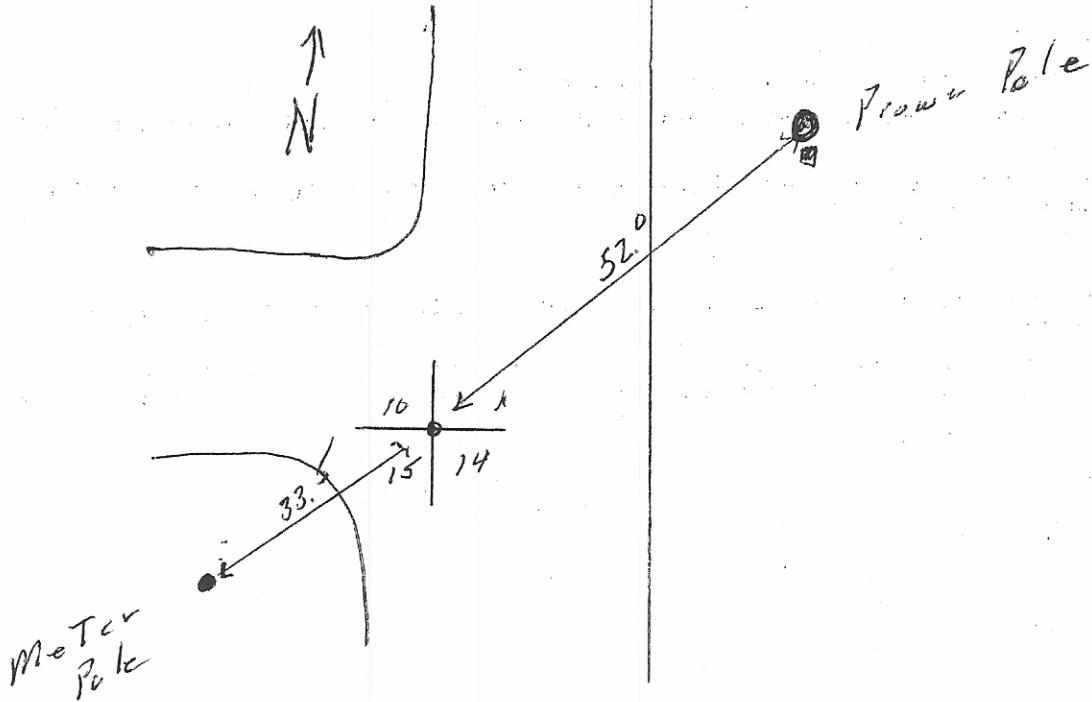
Corner NW Cor Sec 14 T. 35N R. 48E P.M.M. Daniels County

1. GLO Notes

Local subdivision Plats

2. Found Iron monument 1' below road grade

3.



SKETCH OF CORNER

CERTIFICATION

I, Alvin R Lambert certify the information shown herein is true and correct.

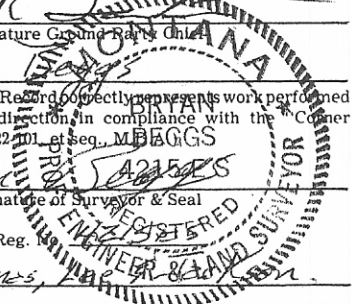
Alvin R Lambert
Signature Ground Pole Owner

I, Bryan Beggs certify that this Corner Record correctly represents work performed by me or under my direction in compliance with the "Corner Recordation Act" (70-22-201 et seq., MCA) of the State of Montana.

Bryan Beggs
Signature of Surveyor & Seal

Date: 4-14-04 Reg. No. 42157ES

Employer: Kedmes, Inc.



Office of Clerk and Recorder, County of Daniels. This "corner record" was filed for record on the April 16, 2004 day of ~~XXX~~, was noted on the cross-index plat and is assigned page No. FILED, in book No. _____

Krusty Jones
County Official

Sec. 14
